

# U.S. PUBLIC LAND SURVEY MONUMENT RECORD

For Public Land Survey Corners in the

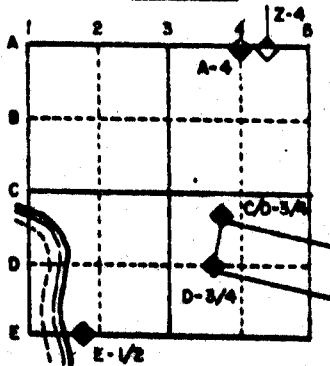
T. 2 N., R. 11 E.

## CORNER CODE INDEX

	1	2	3	4	5	6	7	8	9	10	11	12	13	14	15	16	17	18	19	20	21	22	23	24	25
A																									
B																									
C	8	5	4	3	2																				
D																									
E																									
F																									
G	7	6	9	10	11	12																			
H																									
I																									
J																									
K																									
L	18	17	16	15	14	13																			
M																									
N																									
O																									
P	19	20	21	22	23	24																			
Q																									
R																									
S	30	29	28	27	26	25																			
T																									
U																									
V																									
W																									
X	31	32	33	34	35	36																			
Y																									
Z																									

PLACE MONUMENT SYMBOL (●) AT PROPER LOCATION ON ABOVE INDEX

### EXAMPLE



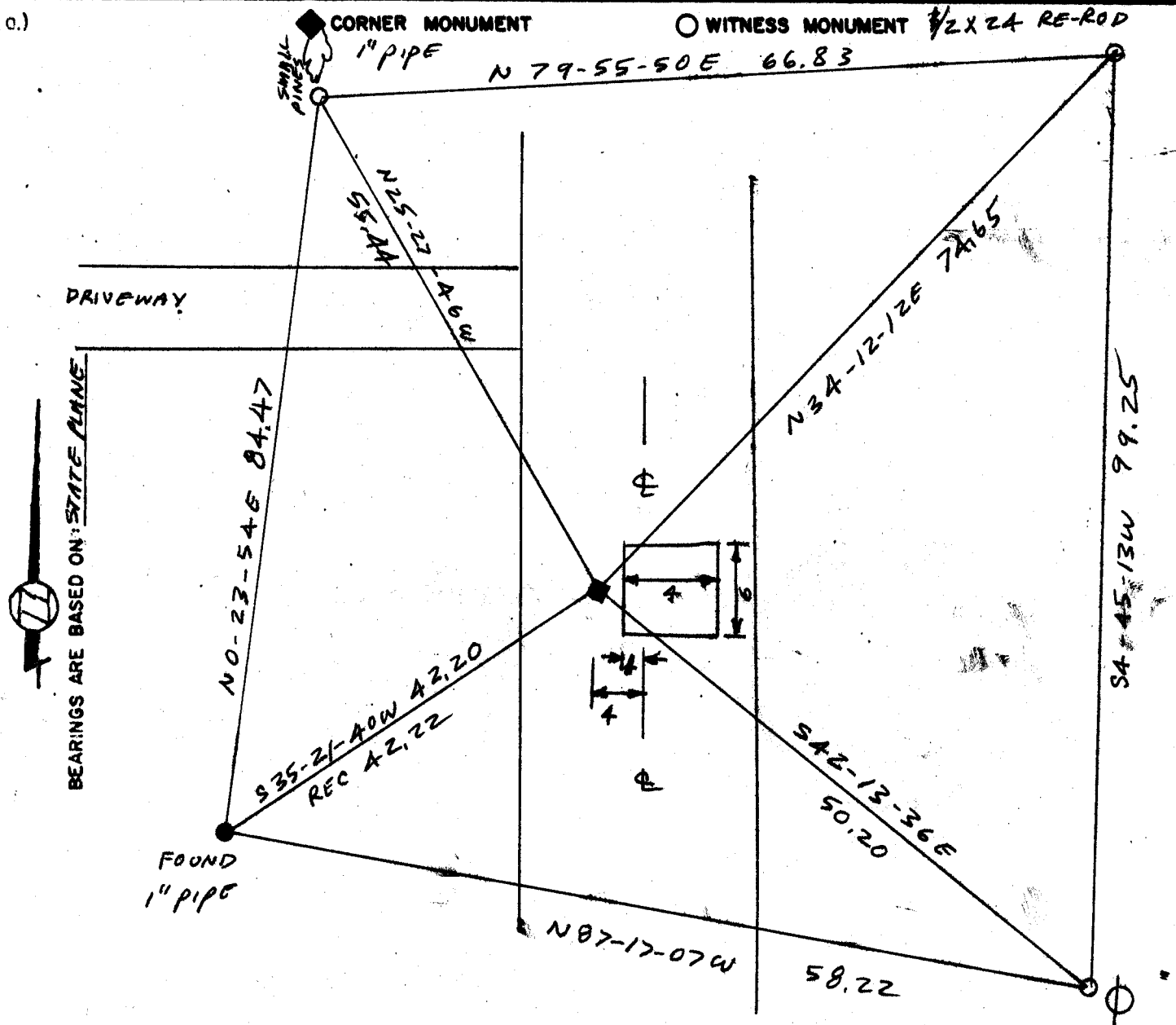
PLYMOUTH TWP  
ROCK COUNTY WI

### IF AVAILABLE STATE PLANE COORDINATES

North (Y) 243,423.27 Elev. (Z) \_\_\_\_\_  
 East (X) 2,223,323.74 Zone \_\_\_\_\_  
 Hor. Datum \_\_\_\_\_ Vert. Datum \_\_\_\_\_

USING DOT CONTROL

a.)



DRIVEWAY

BEARINGS ARE BASED ON STATE PLANE

MICROFILMED

SHEET 1 OF 1

CORNER CODE: C 17

(B) Describe any record evidence, monument evidence, occupational evidence, testimonial evidence or any other material evidence you considered, and whether the monument was found or placed.

- 1855 CHURCH VOL 1 PG 39 STONE 18" LONG 4" THICK LOCUST 4 S5W 909 1/2 LINKS YELLOW OAK 16 N13W 543. USED CORNER TO SUBDIVIDE SECTION 3. SHOWS A DISTANCE OF 2638.35 TO THE CENTER OF SECTION 3.
- 1868 LOCKE REMONUMENTATION FIELD NOTES. FOUND STAKE & STONE AND B.T.s TAKEN BY CHURCH. CORNER IN CENTER OF HIGHWAY AND IN LINE OF E & W FENCES. PLACED CUT LIMESTONE.
- 1877 RUGER VOL 2 PG 234 FOUND STONE MONUMENT. USED TO SUBDIVIDE SECTION 2. SHOWS A DISTANCE OF 2697.75 TO THE NW CORNER OF SECTION 2 AND 2651.22 TO THE CENTER OF SECTION 2.
- 1886 RUGER VOL 2 PG 272 USED TO SUBDIVIDE SECTION 3 BUT STATES NOTHING ABOUT THE CORNER. SHOWS A DISTANCE OF 2648.42 TO THE CENTER OF SECTION 3.
- 1933 SUNNY VOL 3 PG 235 SHOWS TIES TO CORNER AND STATES "THIS 1/4 CORNER IS GONE. NOW GRAVEL PIT FILLED WITH ASHES. DUG AND FOUND 3 x 6 x 12 LIMESTONE 4' DEEP."
- 1972 SHIMEALL VOL 3 PG 235 NOTE STATES THAT HE PLACED A 1" PIPE.

ACCEPTED FOUND PIPE. DUG 4x6 6' DEEP HOLE 5'  
EAST OF PIPE AND FOUND NOTHING.

