

U.S. PUBLIC LAND SURVEY MONUMENT RECORD

For Public Land Survey Corners In:

WI ADMINISTRATIVE CODE A-E 7.08 REQUIREMENT

T. 2 N. R. 11 E.

CORNER CODE INDEX

1	2	3	4	5	6	7	8	9	10	11	12	13	14	15	16	17	18	19	20	21	22	23	24	25	
A																									A
B																									B
C																									C
D																									D
E																									E
F																									F
G																									G
H																									H
J																									J
K																									K
L																									L
M																									M
N																									N
O																									O
P																									P
Q																									Q
R																									R
S																									S
T																									T
U																									U
V																									V
W																									W
X																									X
Y																									Y
Z																									Z

PLYMOUTH TWP
ROCK COUNTY WI

IF AVAILABLE
ROCK COUNTY COORDINATES PREFERRED

North _____ Elev. _____

East _____

Hor. Datum _____ Vert. Datum _____

LATITUDE _____ ELLIPS. HT. _____

LONGITUDE _____

GPS (X) _____ TRAVERSE (X) _____

BASED ON THE FOLLOWING CONTROL:

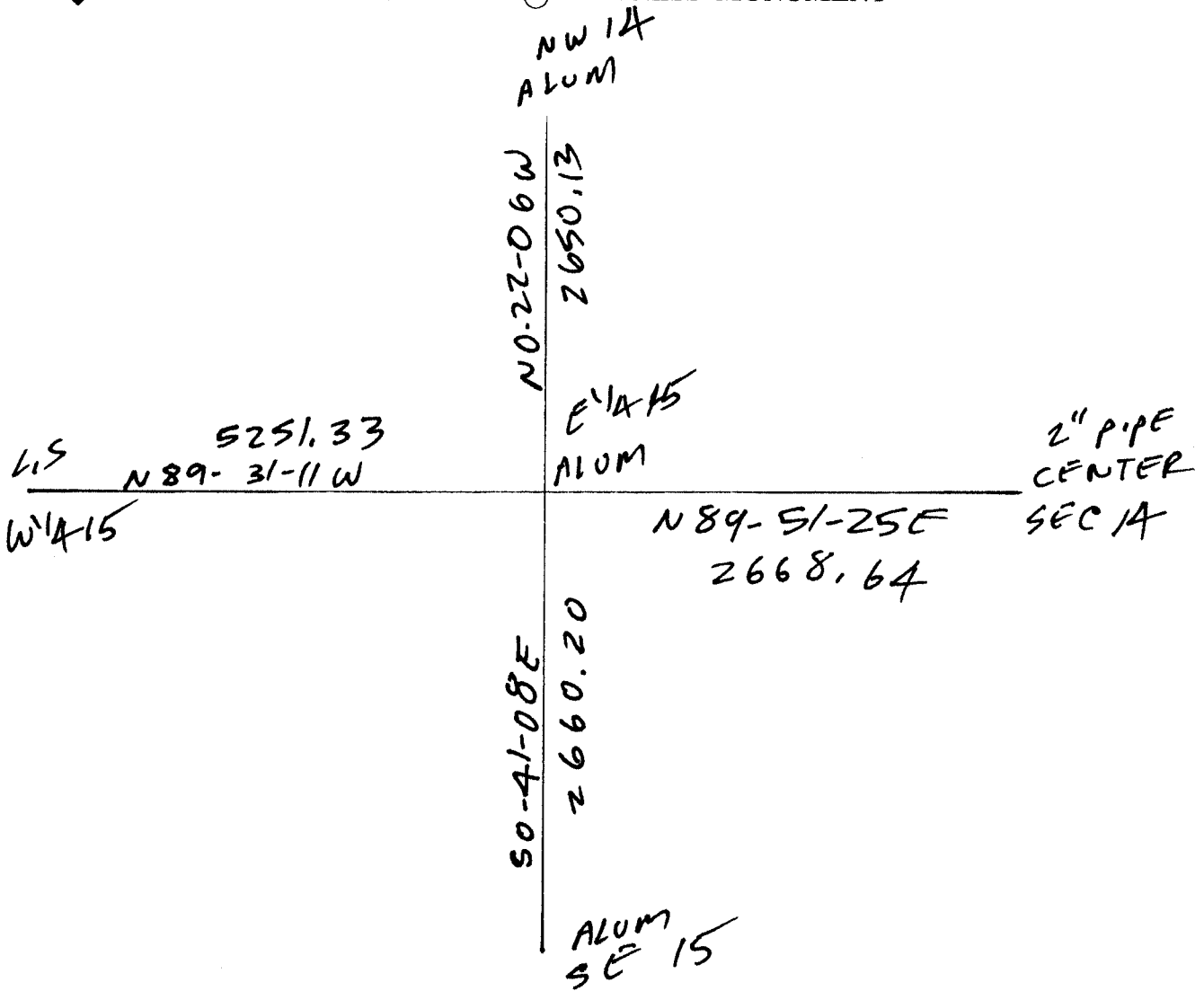
1 2 3 4 5 6 7 8 9 10 11 12 13 14 15 16 17 18 19 20 21 22 23 24 25
PLACE MONUMENT SYMBOL **◆** AT PROPER
LOCATION ON ABOVE INDEX

◆ CORNER MONUMENT

○ WITNESS MONUMENT

(a)

BEARINGS ARE BASED ON:



OBSERVATION SHEETS # 139, 210, 314

FIELD BOOK _____ PAGE # _____

SHEET 1 OF 2

SHOW A PLAN VIEW DRAWING DEPICTING THE CORNER MONUMENT AND SURROUNDING PHYSICAL FEATURES, INCLUDING THE EXCAVATION AREA AND DEPTH.

PLANNING & ZONING COMMITTEE ADOPTED THE ABOVE FORM ON 12/2/1982

CORNER CODE L-17

PL558

(B) Describe any record evidence, monument evidence, occupational evidence, testimonial evidence or any other material evidence you considered, and whether the monument was found or placed.

1833 HARRISON NORTH BET 14 & 15

2640 QUARTER SEC COR {BURR O 14 S43E 18.48'
BURR O 24 S70W 52.8' BURR O 14 BURR O
24} MARKED

2665.08 BURR O 14

3402.96 BURR O 24

4488 LEFT TIMBER & ENTER MARSH

4917 BROOK 33' S.E.

5280 COR TO SEC 10, 11 14 15 POST & MOUND OF
TURRACHS LAND ROLLING ON S ¼ AS BEFORE &
NORTH ½ LEVEL & WET 3RD RATE

1855 CHURCH VOL 1 PG 35 BLACK OAK 10 N37E 44.88' & BLACK
OAK 6 S87W 18.48'. THE TREES AS MINUTED ON THE
GOVERNMENT SURVEY IS IN ERROR TO MY SATISFACTION.
THE ABOVE SURVEY IS INCORRECT CAUSED BY GOV. FIELD
NOTES NOT BEING CORRECT. REFER TO PAGE 64. 2617.56
TO CENTER SEC 14

1856 CHURCH VOL 1 PG 64 VAR 7-10 2640 TO CENTER SEC 14 &
VAR 7-10 5280 TO E ¼ COR SEC 14

1868 LOCKE PG 41 NORTH BETWEEN SECS 14 & 15 VAR 7-25

2661.78 INTERSECTED ¼ LINE 7.92' WEST OF COR. FOUND
STUMPS OF B.T.S AND STAKE. VAR CORRECTED 7-
15

SET OFF 29.7' WEST OF ¼ COR. AND
CONTINUED NORTH WITH VAR 6-15

2686.86 LINE TREE. DUG OUT.

4719 CENTER OF M&M RR

5312.01 INTERSECTED NORTH BOUNDARY AT COR. SET AS
PREVIOUSLY GIVEN. (PAGE 39) VAR CORRECTED
6-54 AUGUST 29 1868

1869 LEE VOL 2 PG 2 FD MON E/W CENTER LINE SEC 14 VAR 6-45

1873 RUGER VOL 2 PG 112 STONE MON. VAR 5-42 2617.56 TO
CENTER SEC 15 & VAR 5-42 5238.42 TO W ¼ COR SEC 15

1874 RUGER VOL 2 PG 137 STONE. 2617.56 TO CENTER SEC 15
& VAR 7-10 ALONG THE EAST LINE OF THE SE ¼ SEC 15

1977 BARNES VOL 5 PG 284 DUG & FD CUT LIMESTONE 1.8'
DEEP. REFERENCED SAME. SET ALUM 1978

1977 COMBS CSM VOL 7 PG 42 EAST 1334.73 TO A FD R/R SPIKE
AT THE 1/16TH COR.

1978 COMBS CSM VOL 7 PG 362 FD CUT L.S.

1980 BARNES VOL 6 PG 40 FD ALUM S89-17-43E 1334.45 TO FD
R/R SPIKE. FD PK S58-30-16E 9.05 OF ABOVE MENTIONED
R/R SPIKE, & S0-09-45W 2660.26 TO SE COR SEC 15.
SUNSHOT. BEARINGS REFERENCED TO TRUE NORTH.

1982 BARNES VOL 6 PG 282 N89-49-16E 1334.49 TO R/R SPIKE,
N89-49-32E 1334.05 FROM R/R SPIKE TO CENTER OF SEC
14, & FROM CENTER SEC 14 TO E ¼ COR SEC 14 S89-49-
47E 2658.20 (1910 KERCH 2659.2)

1986 COMBS MAP #13270 STATES NOTHING ABOUT MON..

1990 SCHROEDER CSM VOL 14 PG 342 STATES NOTHING ABOUT
MON. 2621.24 TO CEN SEC 15.

1997 COMBS CSM VOL 7 PG 42 STATES NOTHING ABOUT MON.
EASTERLY 1334.73 TO 1/16TH COR

1999 COMBS CSM VOL 22 PG 282 ALUM MON. 2660.0 TO SW COR
SEC 14 AN ALUM MON.

1999 COMBS CSM VOL 22 PG 459 FD ALUM 2660.0X TO SW COR
SEC 14

FD ALUM SOUTH SIDE OF PVMT. & TIES

Ronald Eaves

SHEET 1 OF 2

L-17

12-27-02

PL558

C) Was the corner restored through acceptance of (1) an obliterated evidence location, or, (2) a found perpetuated location?

ACCEPTED FD ALUM. MON.

D) Describe any material discrepancy between the location of the corner as restored or reestablished and the location of that corner as previously restored or reestablished by distance and direction. Show the discrepancy on the plan view drawing under (a), above. Show the distances between the corner as previously restored or reestablished and (1) the corner as restored or reestablished, and (2) to at least 4 of the witness monuments shown on the drawing in (a), above.

(E) Was the corner reestablished through lost corner proportionate methods? If so, show the method, including the directions and distances to other public land survey corners used as evidence or used for proportioning the corner location.

I, Donald Barnes, hereby certify that the corner location as identified by the corner code index was determined by me under my direction and control and that this U.S. Public Land Survey Monument Record is correct and complete to the best of my knowledge and belief.

Donald Barnes
Seal

12-27-02

Emboss

SHEET 2 OF 2

CORNER CODE **L-17**

A.E. 7.08 REQUIREMENT