

PLAT AND RECORD

Of a Survey on Section 1 T 2 R 12 E. of the 4 P. M. in Rock Township

Rock County, Wisconsin, made January the 18th 1859

I hereby certify that the following is a correct record of said survey as made by me.

COUNTY BUILDING
IN CITY OF BELOIT

(Signed) Edward Ruger
ERS County Surveyor.

For William Atkinson

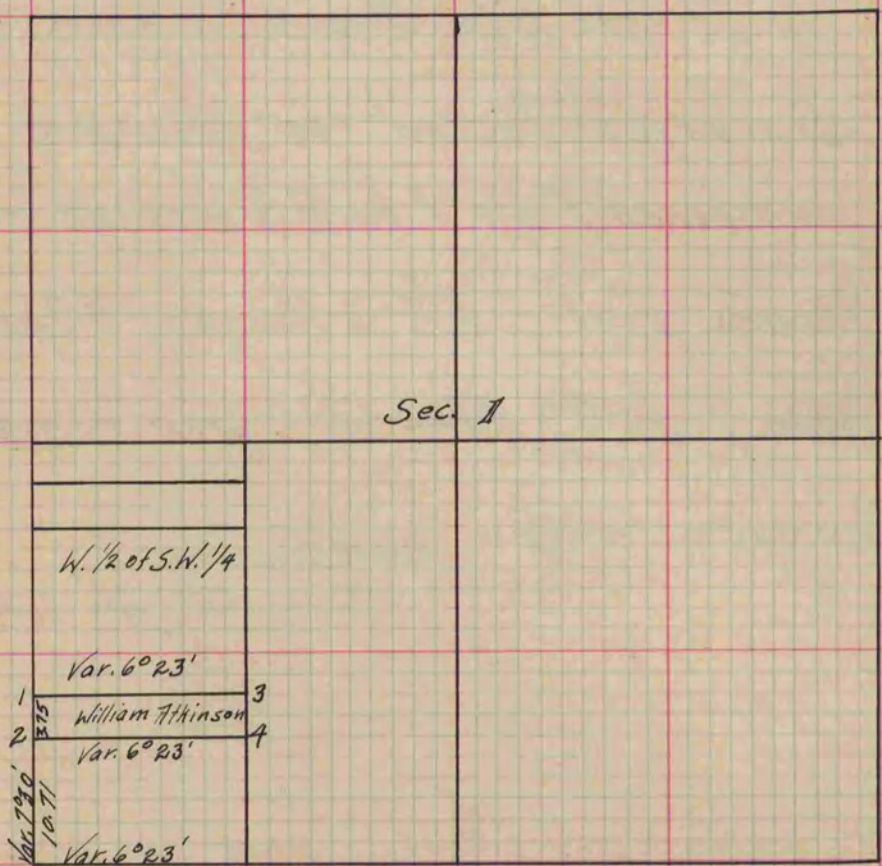


Fig. 1 Burr Oak 6 S. 14° 28' W. 99 1/2 links.
 " " " " 2 S. 75° 32' W. 51 "
 " 2 Black Oak N. 88° E. 50 "
 " " " " N. 58° 30' E. 59 1/2 "
 Var. on bearing trees 7° 30'

Copied from Page 86 Vol. 1. Original County Surveyor's Record.