

PLAT AND RECORD

Of a Survey on Section 11 T 1 R 13 E. of the 4 P. M. in Turtle Township
 Rock County, Wisconsin, made February the 24th 1859

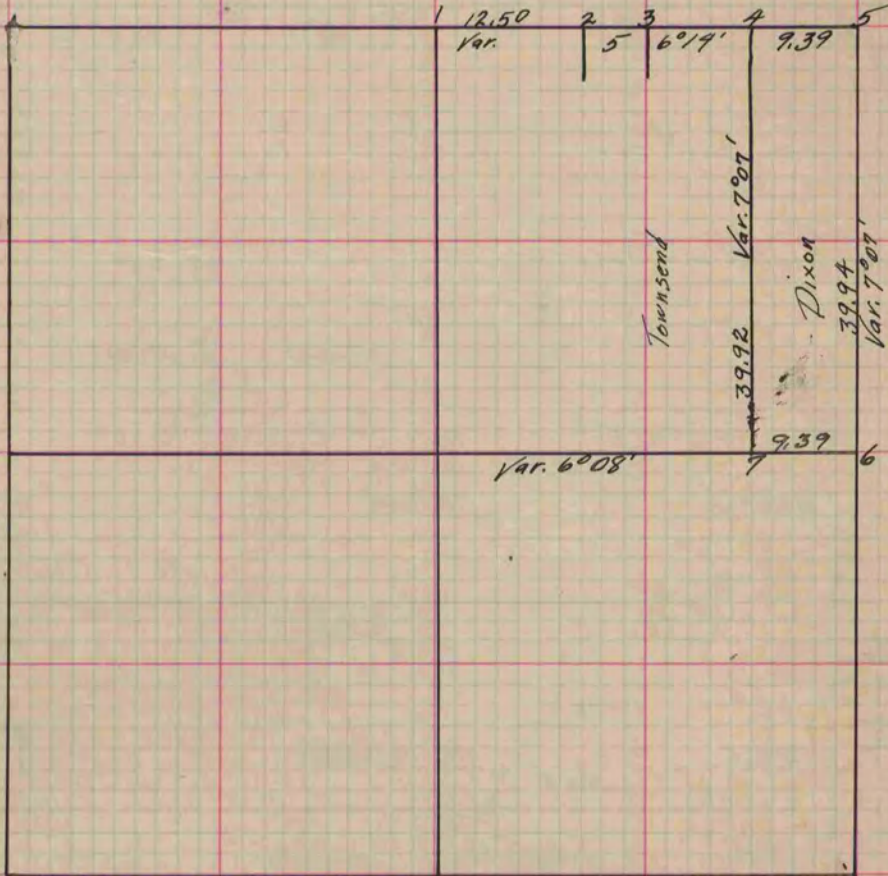
I hereby certify that the following is a correct record of said survey as made by me.

COUNTY BUILDING
 IN CITY OF BELOIT

(Signed) Edward Roger.
ER

County Surveyor.

For Dixon & Townsend
 Distances given in chains
 Variations marked on the lines.



- Fig. 1 The same as Fig. 5 Sec. 2 of same town
- " 2 Burr Oak 7 S 71° W 166 1/4
- " " " " 8 S. 21° 35' E. 108 3/4 Var. 6° 1/4
- " 5 The same as Fig. 3 Sec. 2 of same town
- " 6 Government wit. trees disagree, put in point by averaging error

Copied from Page 102 Vol. Original County Surveyors Record