

PLAT AND RECORD

Of a Survey on Section 21 T 3 R 12 E. of the 4 P. M. in Janesville Township
Rock County, Wisconsin, made March 21st & 22nd the 1859

I hereby certify that the following is a correct record of said survey as made by me.

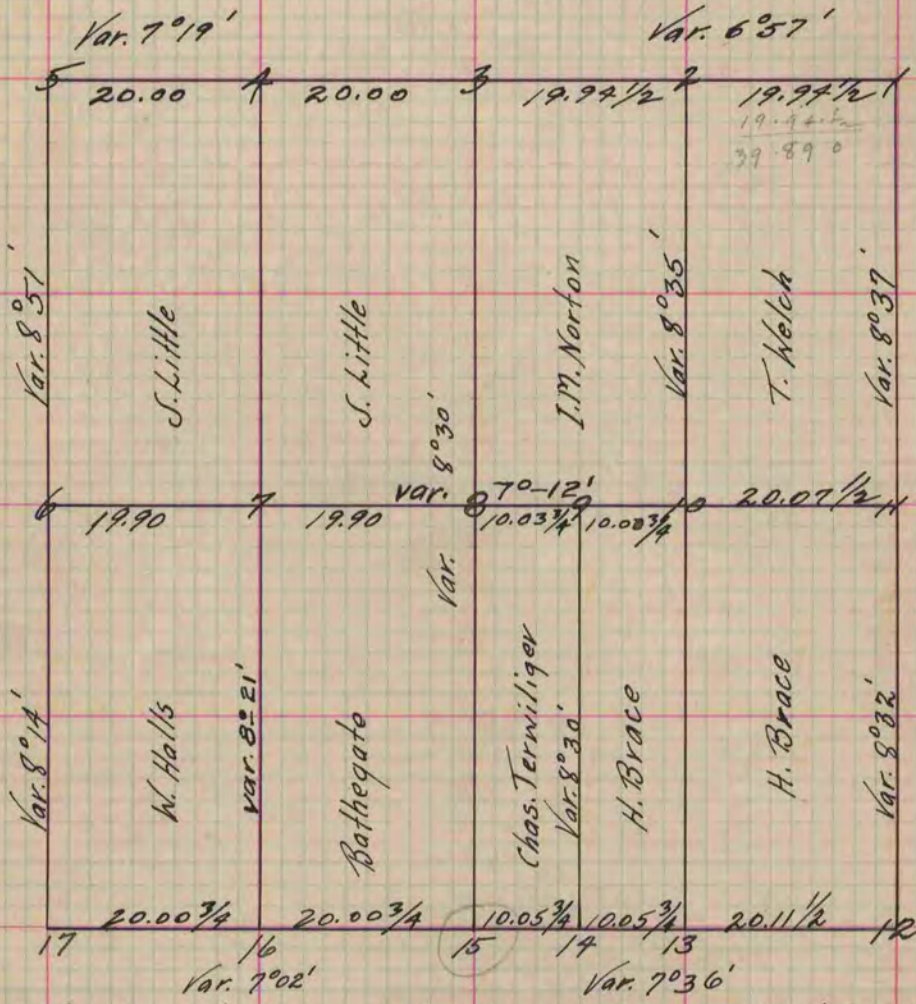
COUNTY BUILDING
IN CITY OF БЕЛОIT

(Signed) Edward Ruger
RRB

County Surveyor.

For: Brace, Terwiliger, Hall, Bathegate, Little, Welch & Norton

Distances given in chains.
Variations marked on lines.



- " At Fig. 1 Old witness standing - Black Oak 12 S. 31° W. 15 - W. Oak 12 N. 30° W. 10A
- " " 2 Took W.T. White Oak 30 N. 65° 25' E. 218 Var. 8° 32'
- " " 3 Old W.T. Standing Burr Oak 10 S. 5° E. 17 - Burr Oak S. 40° W. 37
- " " 4 Took no bearings, Fig. 5 Old witness trees agreed as to distance, but required a variation of 10° 40' to close on bearing 1795.
- " " 6 Old witness trees standing Red Oak 10 S. 43° E. 56 - Bro. O. 6 N. 10° W. 21, Old W.T. being in highway took new ones, - Burr Oak 7 N. 79° 52' W. 133 3/4 Burr O. 5 N. 84° 35' W. 137. Var. 7° 30'
- " " 7 White Oak 14 S. 33° E. 17 3/4 Var. 7° 12'
- " " 8 White Oak 14 S. 25° 27' E. 62 1/2 - W. 9 1/2 S. 63° 38' - 78 1/4 - W. O. 12 S. 66° 35' W. 115
- " " 9 White Oak RR S. 7° 37' W. 55 1/2 - W. O. 11 S. 44° 30' E. 80 1/4 Var. 7° 12'
- " " 10 Black Oak 13 N. 58° 25' E. 13 - Fig. 11 one old W.T. still standing W. Oak 24 S. 43° E. R. other W.T. cut down
- " " 12 Old W.T. cut down. Put in post from stumps and took W.T. - R. O. 7 S. 62° W. 117 Red Oak 7 N. 62° 12' W. 130 R. O. 12 N. 31° 56' E. 202 Var. 7° 45'
- " " 13 Locust 5 N. 1° 15' W. 54 3/4 Var. 7° 36'
- " " 14 " 6 N. 14° 25' E. 57 1/2 - Locust 6 N. 45° 55' E. 80 1/4 Var. 7° 36'
- " " 15 Old W.T. Red Oak 10 N. 11° E. 177 Took new W.T. Black O. 8 S. 24° 15' W. 151 1/4
- " " 16 B. O. 6 S. 0° 43' E. 68 1/4 Var. 7° 36'
- " " 17 Took W.T. Red O. 12 N. 14° 37 1/2 E. 219 - R. O. 10 N. 22° 10' E. 193 1/2 - Cherry 8 N. 18° 14' W. 171 1/2 Var. 7° 36'

Copied from Page 106 Vol. 1. Original County Surveyor's Record.