

# PLAT AND RECORD

Of a Survey on Section 6 T 2 R 12 E. of the 4 P. M. in Rock Township  
Rock County, Wisconsin, made May the 24<sup>th</sup> 1855

I hereby certify that the following is a correct record of said survey as made by me.

COUNTY BUILDING  
IN CITY OF БЕЛОIT

(Signed) Joseph Church  
R.H.B. County Surveyor.

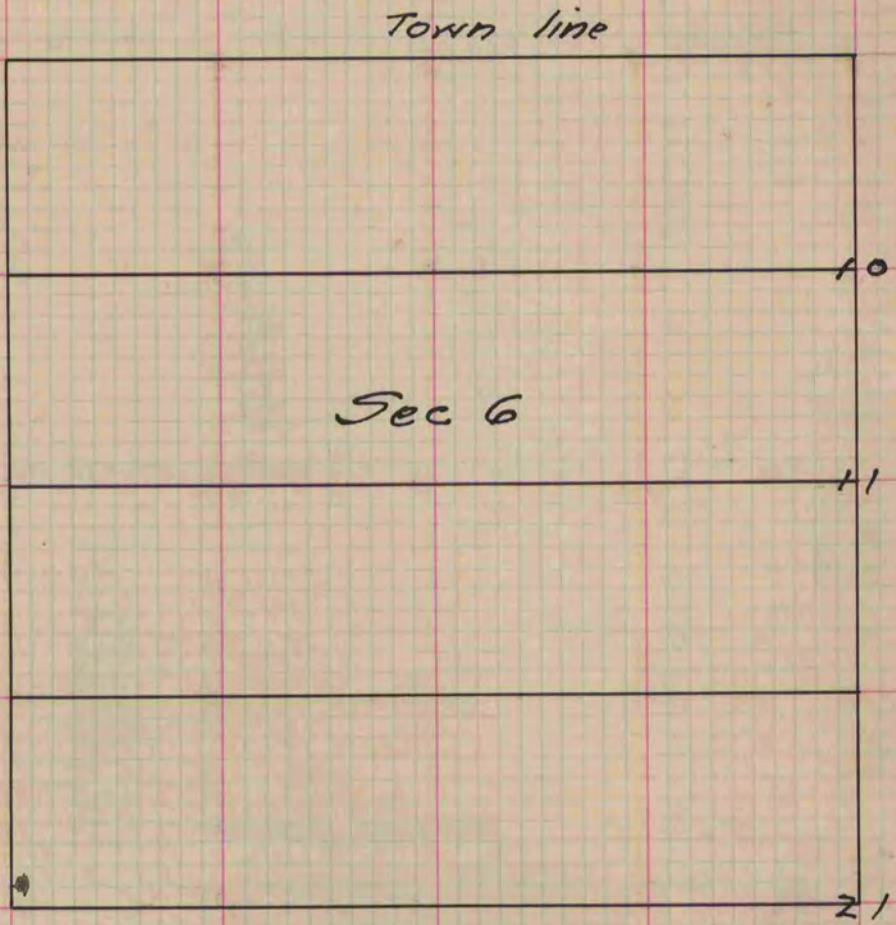


Figure 11 represents the East gr. post.  
 Burr O. 24 N. 17 1/2 W. 15.55 links  
 " " 14 S. 38 1/2 W. 7.77 "  
 Fig. 10. " 20 N. 60 E 84 "  
 " " 18 N 70 W. 195 "

Variation on the Compass 7 1/2 degrees

Remarks I find on the record a Survey by P. McYean of the same line which is entirely wrong the system of his surveying does not correspond with mine. I find the stake equally divided and being on the North Town Line where the Sec. over runs

(Signed) Joseph Church, County Surveyor  
R.H.B.

Copied from P. 38 Vol. 1. Original County Surveyors Record