

PLAT AND RECORD

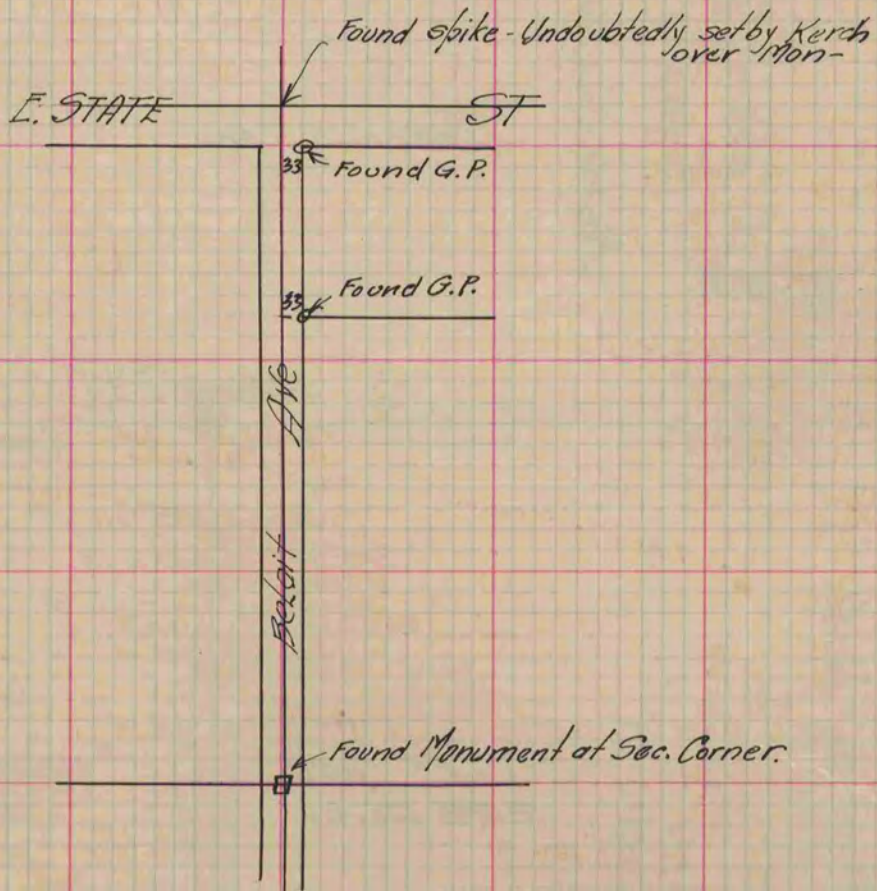
Of a Survey on Section 1 T 2 R 12 E. of the 4 P. M. in Rock Township

Rock County, Wisconsin, made August the 1919

I hereby certify that the following is a correct record of said survey as made by me.

R. H. Batterman

County Surveyor.



Chain S. from Spike & Beloit Ave $\frac{1}{4}$ Cor. at E. State St.
 53.62 Spike } Gas Pipe 33 ft. E. from & Beloit Ave.
 54.44 " }
 581.74 " 33 ft. E. of Gas pipe
 584.74 " }

This Survey was called off.

#249
B. B. P. 50