

PLAT AND RECORD

COUNTY BUILDING
IN CITY OF BELOIT

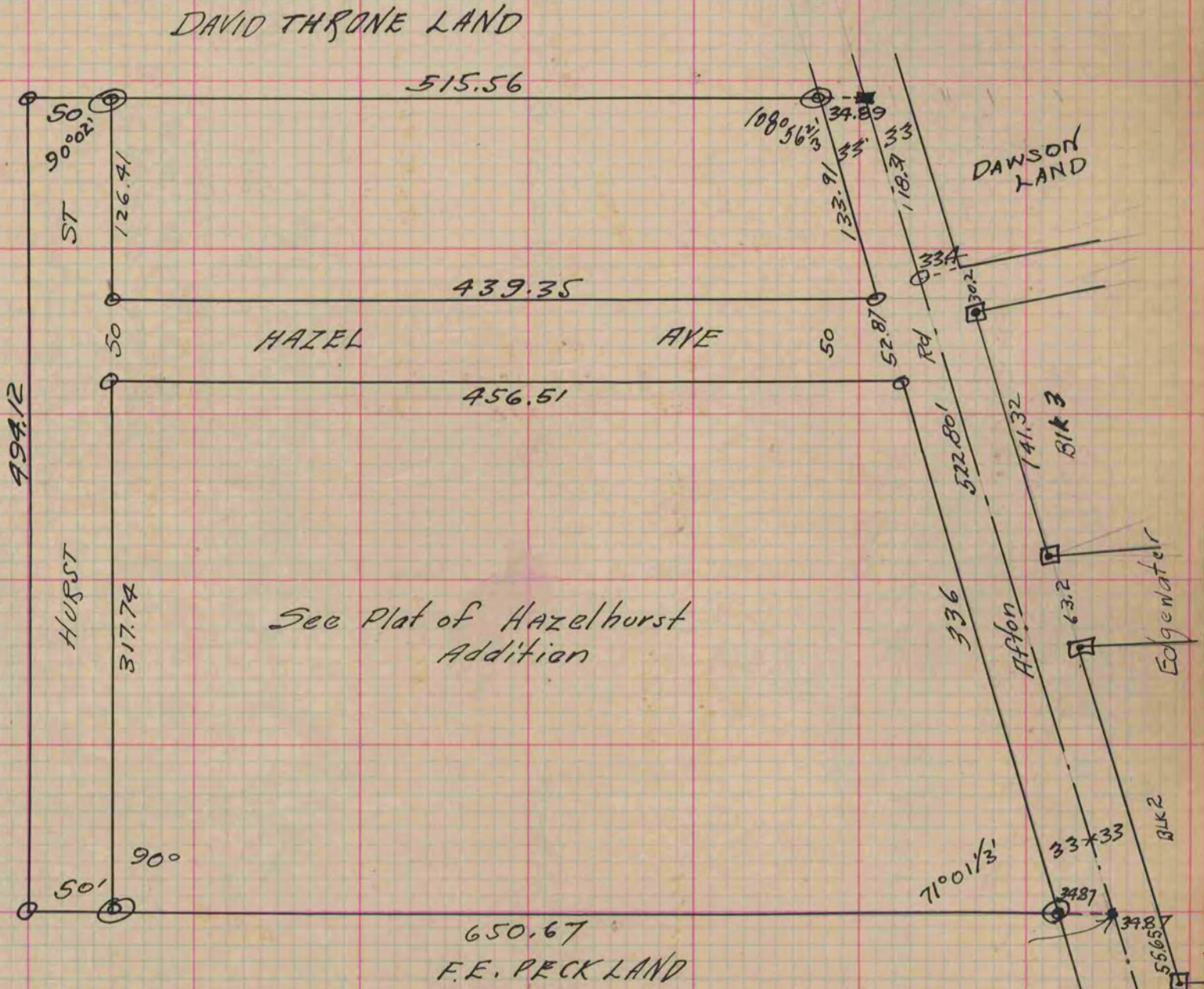
Of a Survey on Section 26 T 1 R 12 E. of the 4 P. M. in Beloit Township

Rock County, Wisconsin, made September the 24 1919

I hereby certify that the following is a correct record of said survey as made by me.

A. R. Batterman

County Surveyor.



- = Gas Pipe, ⊙ = Gas Pipe Brass Cap on top
- = iron rod, ■ = iron rod square head
- ◻ = iron rod set in Concrete.

#265
For John Hunt.