

PLAT AND RECORD

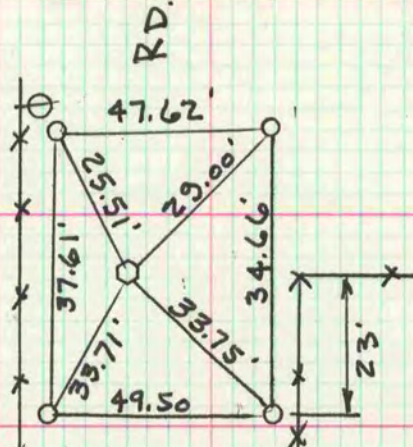
Of a Survey on Section 4 T 3 N R 11 E. of the 4 P. M. in CENTER Township

Rock County, Wisconsin, made JUNE the 20th 1974

I hereby certify that the following is a correct record of said survey as made by me.

Hugh J. Lee
County Surveyor.

COUNTY BUILDING
IN CITY OF БЕЛОIT



N. 1/4 COR
BK 170/96

FELLOWS
S 6-20-74
SET. ALOM. MON.
ML TM

SEE VOL. 5
P. 10 FOR E 1/4
COR.