

# PLAT AND RECORD

15

Bel

Of a Survey on Section 31 T 1 N. R. 14 E. of the 4 P. M. in CLINTON Township

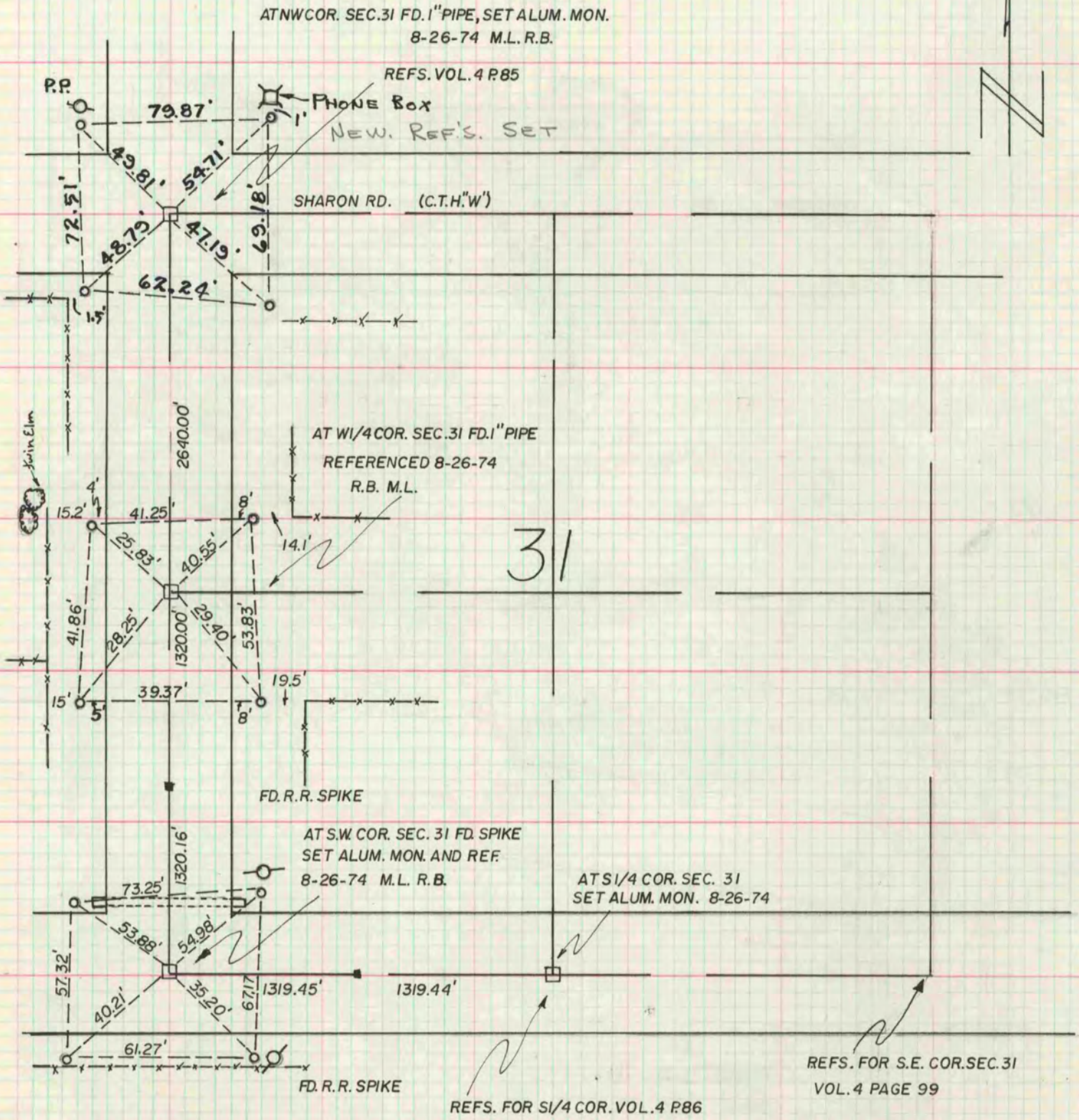
Rock County, Wisconsin, made AUGUST the 26<sup>th</sup> 1974

I hereby certify that the following is a correct record of said survey as made by me.

**COUNTY BUILDING  
IN CITY OF BELOIT**

*Augustine*  
County Surveyor.

THE GEO. D. BARNARD COMPANY, ST. LOUIS



SEE BOOK 170 PAGES 125-129