

PLAT AND RECORD

13

Of a Survey on Section 10 & 23 T 4 R 13 E. of the 4 P. M. in MILTON Township

Rock County, Wisconsin, made JULY the 17th 1974

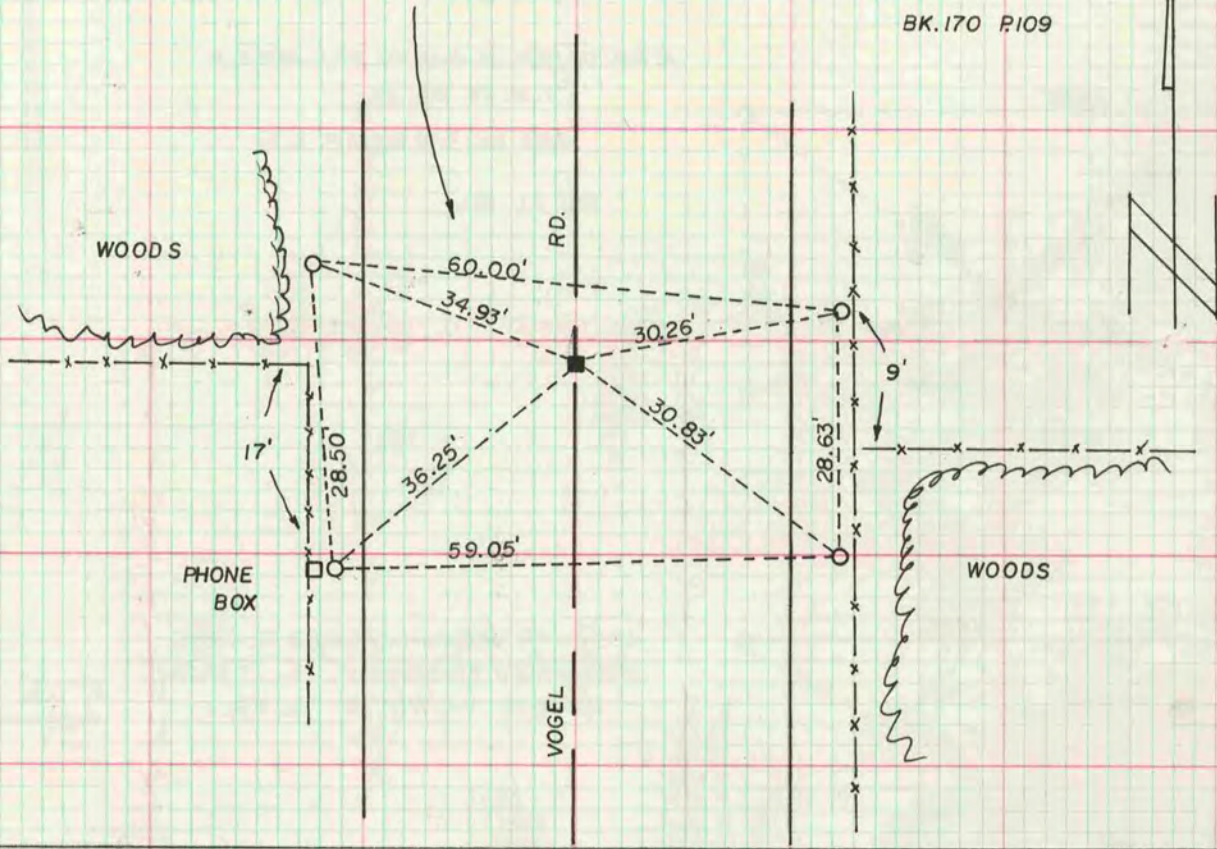
I hereby certify that the following is a correct record of said survey as made by me.

Angelo Lee
County Surveyor.

COUNTY BUILDING
IN CITY OF BELOIT

THE GEO. P. BARNARD COMPANY, ST. LOUIS

AT N1/4 COR. SEC. 10-4-13 FD. CUT STONE 7-16-74 W.K. J. J.L.
SET MON. AND REF. 7-17-74 M.L. J.L. B.L.



BK. 170 P110

AT S1/4 COR. SEC. 23-4-13 FD. CUT STONE
7-16-74 W.K. J.L.

SET ALUM. MON. AND REF. 7-17-74 M.L. J.L. B.L.

