

PLAT AND RECORD

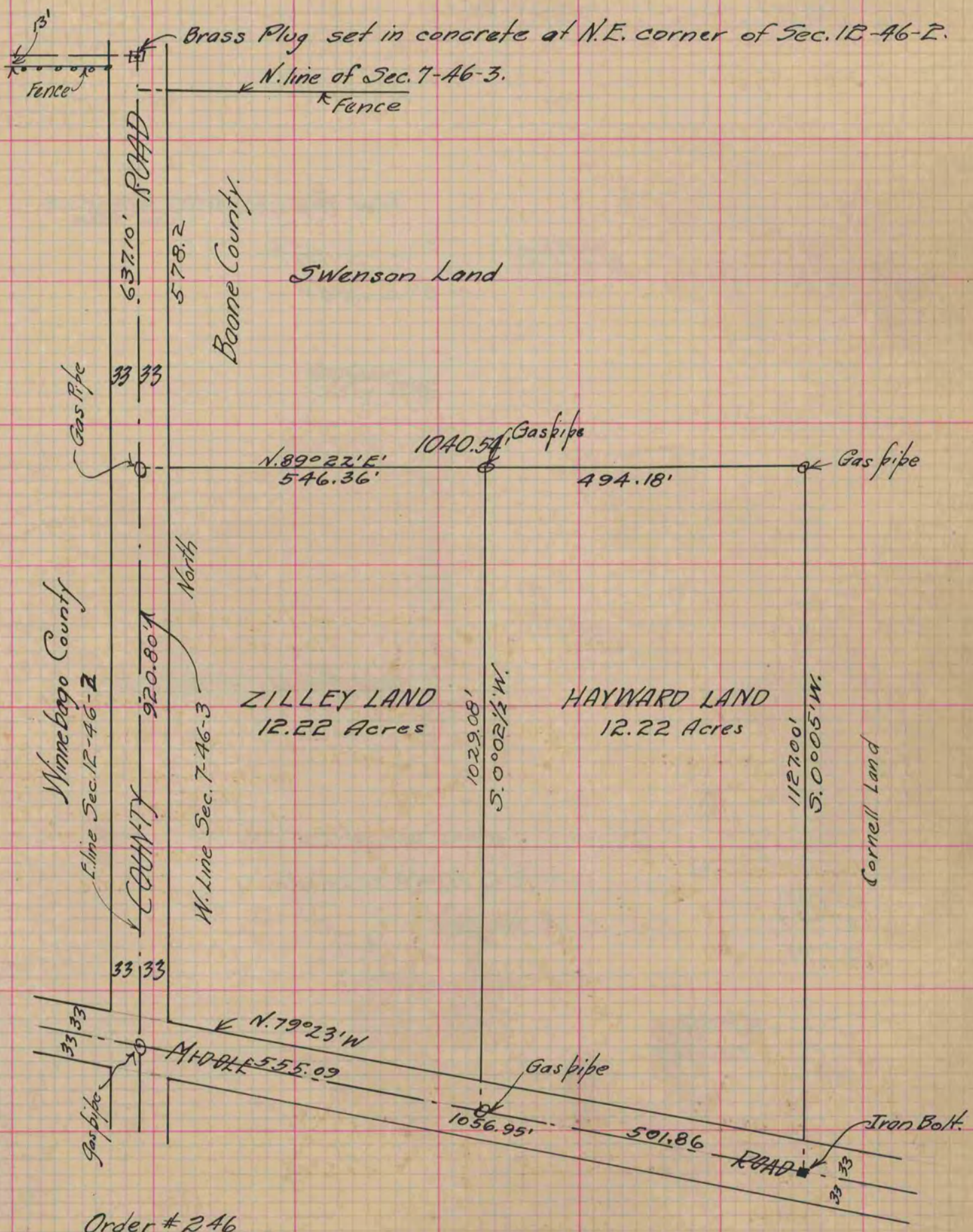
COUNTY BUILDING
IN CITY OF BELOIT

Of a Survey on Section 7 T 46 R 3 E. of the 4 P. M. in Manchester Township
~~Boone~~ Boone County, ~~Wisconsin~~ Illinois, made August the 28th 1919

I hereby certify that the following is a correct record of said survey as made by me.

A. N. Batterman

~~County~~ Surveyor.



Order #246
Scale 1" = 20 ft.
Book 7 P. 23
For Hayward & Zilley.