

PLAT AND RECORD

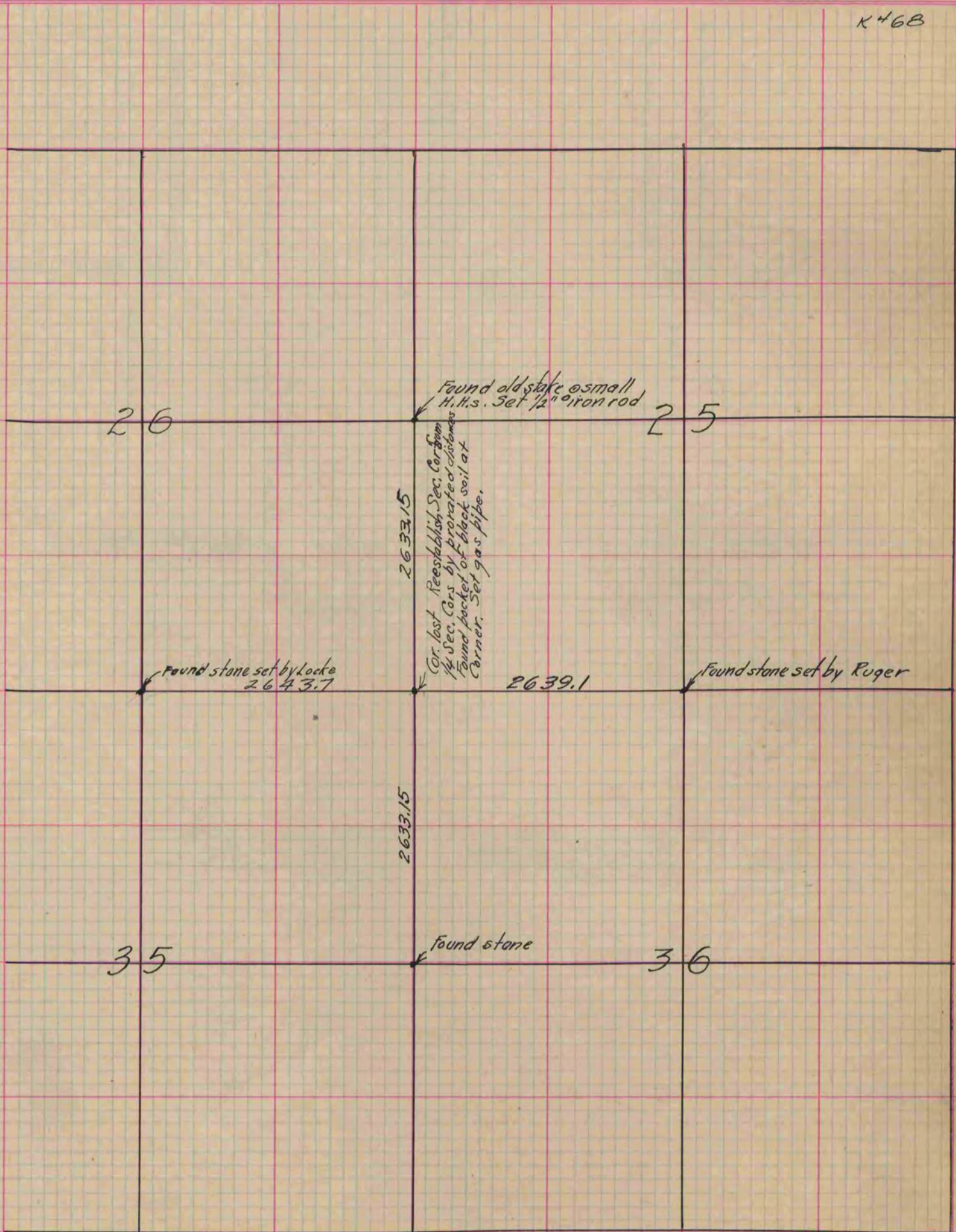
COUNTY BUILDING
IN CITY OF BELOIT

Of a Survey on Section 25, 26, 35 & 36 T 3 R 14 E. of the 4 P. M. in Johnstown Township
Rock County, Wisconsin, made June the 16th 1909

I hereby certify that the following is a correct record of said survey as made by me.

(Signed) C. V. Kerch
R.H.B. County Surveyor.

K+6B



26

25

2633.15

2633.15

2639.1

Found stone set by Locke
2643.7

Found stone set by Ruger

35

36

Found stone

Found old stake & small
H.H.s. Set 1/2" iron rod

Cor. lost. Reestablish Sec. Cor. from
1/4 Sec. Cors by prorated distances.
Found pocket of black soil at
Corner. Set gas pipe.