

PLAT AND RECORD

75

Of a Survey on Section 24 T 3 R 11 E. of the 4 P. M. in Centre Township

Rock County, Wisconsin, made April the 17th 1857

I hereby certify that the following is a correct record of said survey as made by me.

**COUNTY BUILDING
IN CITY OF БЕЛОIT**

(Signed) *Joseph Church*
JCH

County Surveyor.

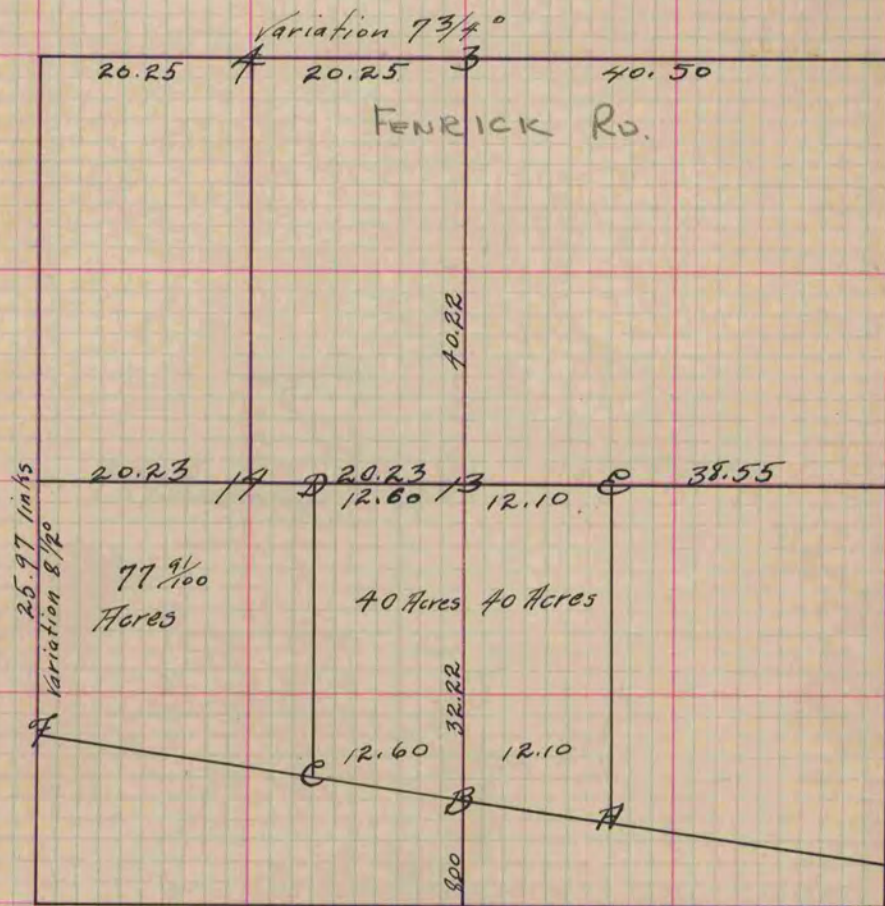


Fig. 13 Stone, Lime Stone 8 long 3 thick
 " 3 Hard head Wit. B 10. 10 N. 79 1/2 E. 147
 B 10. 10 S. 12 E. 241
 Letter A Locust A N. 32 E. 11 3/4 N. side of Road
 B. Lime stone N. side of Road.
 C. Lime stone N. side of Road.
 F. Hard head " " " "
 D. Stake in the ground
 E. Stone.

Copied from Page 76 Vol. 1 Original County Surveyor's Record.