

PLAT AND RECORD

Of a Survey on Section 20 T 1 R 12 E. of the 4 P. M. in Beloit Township
 Rock County, Wisconsin, made March the 7th & 8th 1859

I hereby certify that the following is a correct record of said survey as made by me.

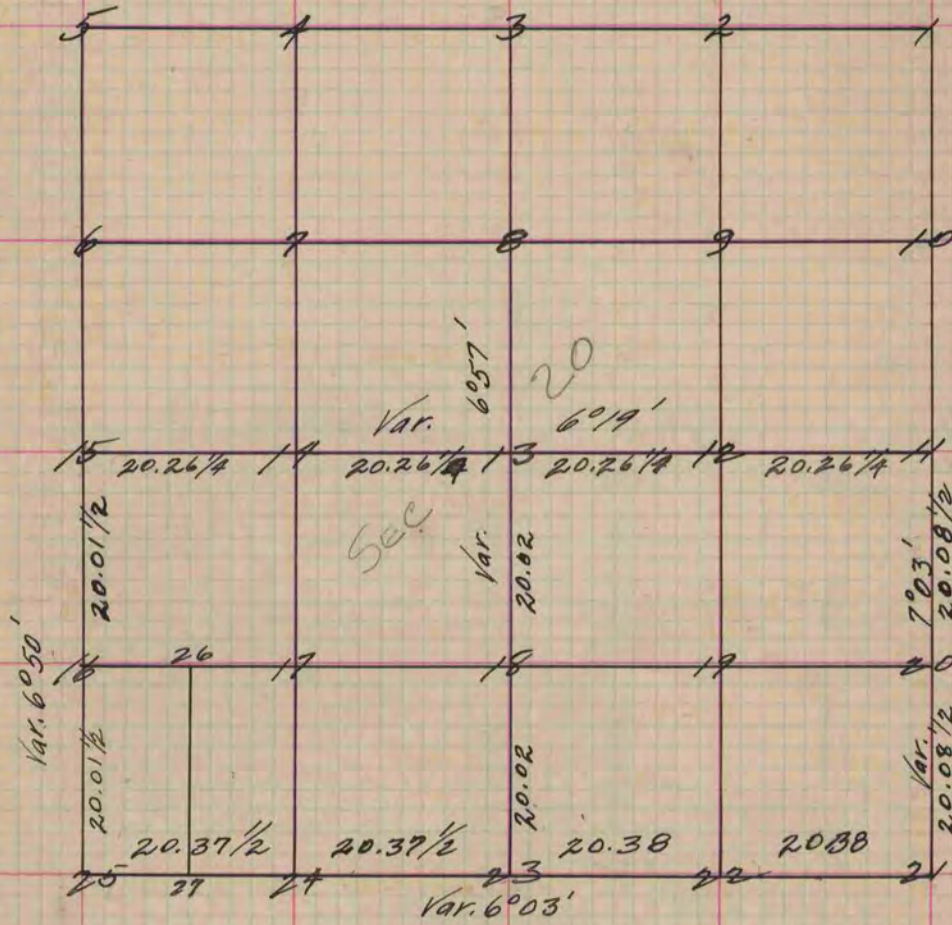
**COUNTY BUILDING
 IN CITY OF БЕЛОИТ**

(Signed) Edward Roger
ER

County Surveyor.

For Dexter, Farr & S. Chamberlain.

*Distances given in chains.
 Variations marked on the lines.*



- At Fig. 3 Surrounded $\frac{1}{4}$ post by 3 hard head stones.
- " " 11 " " " 4 limestones.
- " " 13 " " " 3 hard heads + 1 limestone.
- " " 15 " " " 3 " "
- " " " Took new wit. trees.
- " " " Burr Oak 9 N. 35° 26' E. 170
- " " " " 6 N. 60° 04' W. 174 $\frac{1}{4}$ Var. 6°21'
- " " " " Black Oak 9 S. 1° 57' W. 151
- " " 18 Surrounded $\frac{1}{8}$ post by 4 hard heads.
- " " 18 Burr Oak 6 N. 6° 52' E. 173 $\frac{1}{2}$ Var. 6°55'
- " " " " " 5. 28° 05' E. 154 Var. 6°55'
- " " " " " 5. 10° 37' E. 173 $\frac{1}{2}$ Var. 6°55'
- " " 20 Surrounded post by 3 hard heads.
- " " " Burr Oak 2 S. 7° 03' W. 54 $\frac{1}{2}$ Var. 7°03'
- " " " " 8 N. 2° 18' W. 144 $\frac{1}{4}$ Var. 7°03'
- " " 21 Fig. 21 Surrounded post by 4 limestones.
- " " 26 Surrounded post by 3 hard head stones, took Wil. tree.
- " " " Burr Oak 3 S. 82° 27' E. 10 $\frac{1}{3}$ - Wild cherry 6 N. 57° 46' W. 43 $\frac{1}{4}$ Var. 6°09'

- At Fig. 21 Burr Oak 10 S. 35° 30' E. 196
- " " " Black Oak 5 S. 50° 43' W. 155 $\frac{1}{3}$ Var. 6°58'
- " " " Hickory 2 N. 64° 31' W. 171
- " " 23 Surrounded post by 3 hard heads
- " " " Black Oak 6 S. 49° 50' W. 55 $\frac{1}{4}$ Var. 6°55'
- " " " " " 7 S. 62° 05' W. 97
- " " " " " 2 N. 39° 55' W. 62 Var. 6°55'
- " " 25 Surrounded post by 4 hard heads.
- " " " Black Oak 6 N. 12° 58' W. 119 $\frac{1}{2}$ Var. 6°30'
- " " " Burr Oak 1 $\frac{1}{2}$ N. 76° 07' W. 58 $\frac{1}{4}$ Var. 6°30'
- " " " " " 5 N. 89° 45' W. 145 $\frac{2}{3}$ Var. 6°30'
- " " 27 Took wit. trees and surrounded post by 4 hard heads.
- " " " Ospeh 4 N. 13° 30' E. 74 $\frac{1}{3}$ Var. 6°09'
- " " " Black Oak 2 N. 38° 32' E. 71 $\frac{3}{4}$ Var. 6°09'

Copied from Page 104 Vol. one Original County Surveyor's Record.