

PLAT AND RECORD

Of a Survey on Section 10 T. 1 R. 14 E. of the 4 P. M. in Clinton Township

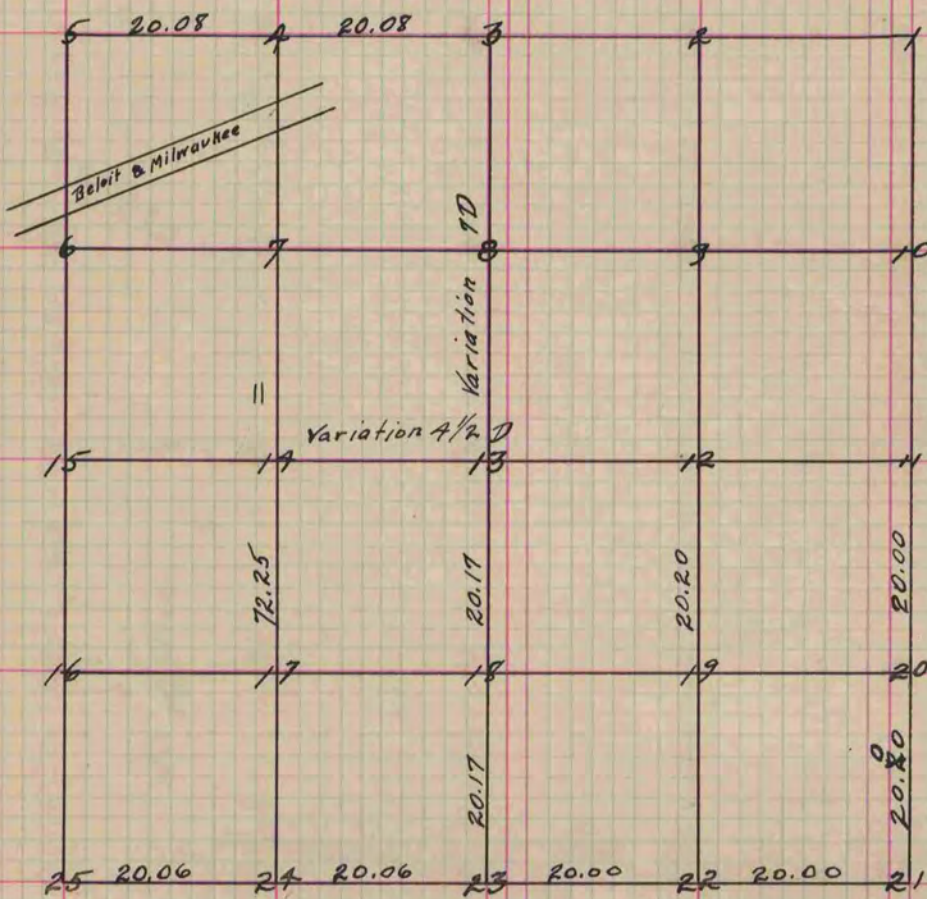
Rock County, Wisconsin, made September the 18th 1855

I hereby certify that the following is a correct record of said survey as made by me.

COUNTY BUILDING
IN CITY OF BELOIT

(Signed) Joseph Church
JNC

County Surveyor.



From Fig. 24. to Beloit & Milwaukee is 72.15 links.
Fig. 7-14-17-24 Stone & Stake put in ground.
Fig. 13 & 18 Stake & Stones.

Copied from Page 51 Vol. 1 Original County Surveyor's Record.