

PLAT AND RECORD COUNTY BUILDING IN CITY OF BELOIT

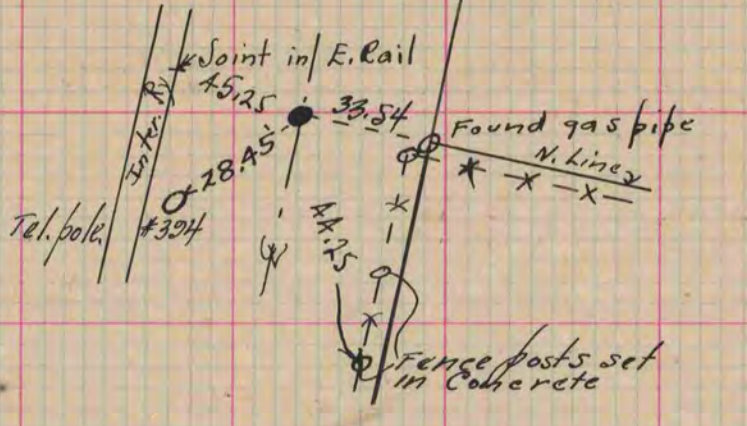
Of a Survey on Section 514-23T 1 R 12 E. of the 4 P. M. in Beloit Township
 Rock County, Wisconsin, made August the 8th 1919

I hereby certify that the following is a correct record of said survey as made by me.

W. B. Batterman
 County Surveyor.

References to Monuments along centre line of Riverside Drive

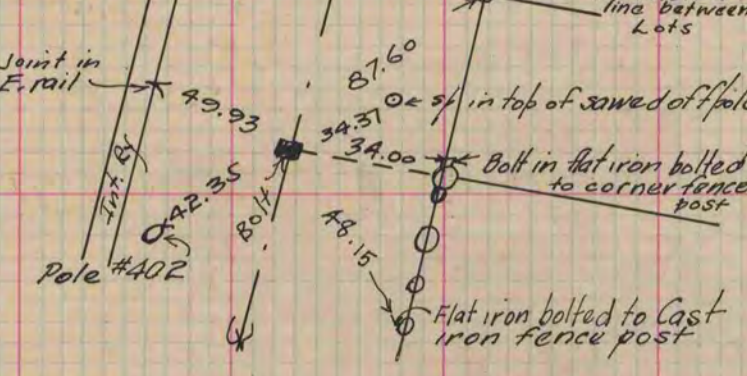
At N. line of Cram's Sub. Found 5/8" solid I.R. top disturbed used straight portion of iron rod



S. Line of Gardner Land



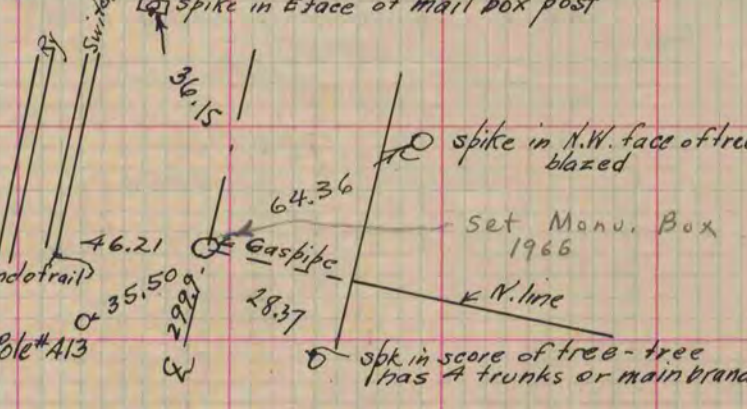
At S. line of Cram's Sub. Found 1/2" Iron Bolt



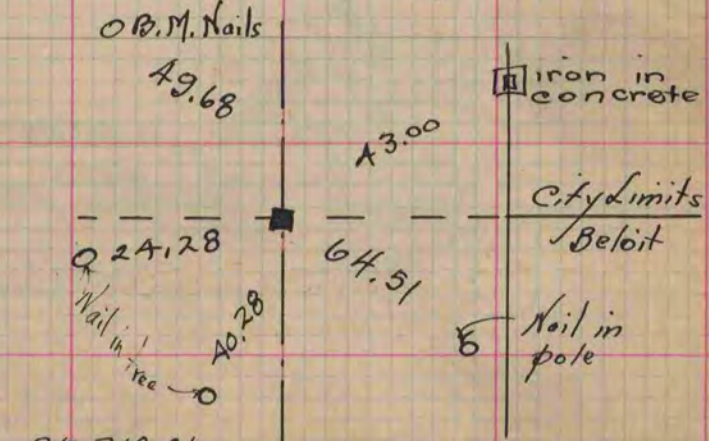
At E Cranston Road

*Found I.R. scored same as follows
 48' S.W. to pole #424
 46.8' W. to E. Rail Inter.
 45.60' S.E. to corner fence post
 44.15 N.E. " " " "
 391.32 ft. N. to I.R. shown above.
 32.2' E. to I.R. (at E Cranston Road to E. Line Riverside Drive it is 28.5 S. to N. face of Cor. fence post + 31.9 N. to S. face of Cor. fence post)*

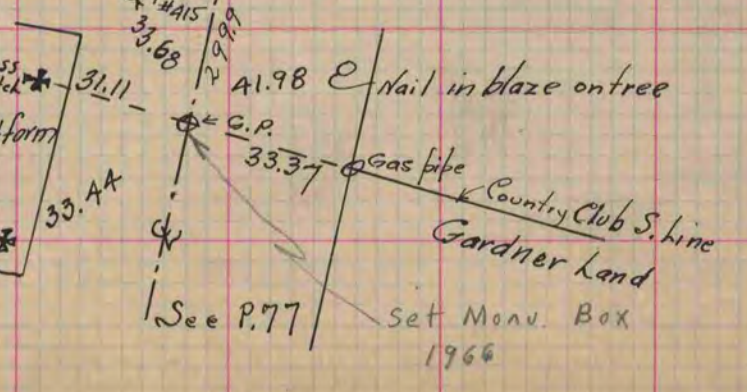
At N. line of Country Club Land found 1" Gas Pipe.



At N. Line of Beloit City Limits Found Iron Bolt set by Ruger



At S. Line of Country Club Land found Gas Pipe.



*B.7 P. 18-21
 B.H. P. 82
 For Town of Beloit.*