

# U.S. PUBLIC LAND SURVEY MONUMENT RECORD

For Public Land Survey Corners in:

WI ADMINISTRATIVE CODE A-E 7.08 REQUIREMENT

T. 3N., R. 14E

### CORNER CODE INDEX

A	1	2	3	4	5	6	7	8	9	10	11	12	13	14	15	16	17	18	19	20	21	22	23	24	25
B	6																								
C																									
D																									
E																									
F																									
G	1																								
H																									
I																									
J																									
K																									
L	18																								
M																									
N																									
O																									
P																									
Q	19																								
R																									
S																									
T	30																								
U																									
V																									
W																									
X	31																								
Y																									
Z																									

JOHNSTOWN TWP

ROCK COUNTY WI

IF AVAILABLE  
ROCK COUNTY COORDINATES PREFERRED

North \_\_\_\_\_ Elev. \_\_\_\_\_

East \_\_\_\_\_

Hor. Datum \_\_\_\_\_ Vert. Datum \_\_\_\_\_

LATITUDE \_\_\_\_\_ ELLIPS. HT. \_\_\_\_\_

LONGITUDE \_\_\_\_\_

GPS (X) \_\_\_\_\_ TRAVERSE (X) \_\_\_\_\_

BASED ON THE FOLLOWING CONTROL:

PLACE MONUMENT SYMBOL  AT PROPER LOCATION ON ABOVE INDEX

CORNER MONUMENT

WITNESS MONUMENT

(a)

BEARINGS ARE BASED ON:

FIELD BOOK \_\_\_\_\_ PAGE # \_\_\_\_\_

SHEET 1 OF 2

SHOW A PLAN VIEW DRAWING DEPICTING THE CORNER MONUMENT AND SURROUNDING PHYSICAL FEATURES, INCLUDING THE EXCAVATION AREA AND DEPTH.

PLANNING & ZONING COMMITTEE ADOPTED THE ABOVE FORM ON 12/2/1982

CORNER CODE X-5

J0615

*(B) Describe any record evidence, monument evidence, occupational evidence, testimonial evidence or any other material evidence you considered, and whether the monument was found or placed.*

- 1867 LOCKE VOL 1 PG 300 FOUND COR. PRESERVED WITH STONE – SET LIMESTONE 16X6X3 WITH LIMESTONE ON NORTH & SOUTH & 2 SMALL HARDHEADS ON EAST & 2 ON WEST. 2640 VAR 4-48 TO CENTER OF SEC 31 & 5200.96' TO W ¼ COR SEC 31.
- 1885 RUGER VOL 2 PG 288 EST. COR. WHERE OLD STONE WAS DUG OUT. DROVE STAKE SURROUNDED BY 4 HH STONES. 2644.75' TO SE COR SEC 31; 2641.19' TO NE COR SEC 31, 2628.38' TO CENTER SEC 32; & 5274.32' TO E ¼ COR SEC 32.
- 1948 SUNNY PLAT OF SURVEY 2646.6 TO SE COR SEC 31.
- 1969 BATTERMAN VOL 4 PG 404 PK NAILS 6' NORTH & 6' WEST. REFERENCE PIPES 1"X24". {STATES NOTHING ABOUT MONUMENT}
- 1981 BARNES VOL 6 PG 193 FOUND 3/8" ROD & REPLACED IT WITH ALUM. MON. FOUND REFERENCE PIPES.
- 1982 BARNES REMONUMENTATION PROJECT MAP. S0-30-32E 2647.52' (RUGER 2644.75') TO SE COR SEC 31, TO NE COR SEC 31 N0-31-44W 2640.48 (RUGER 2641.19), S87-59-18E 5210.28' (LOCKE 5200.97') TO W ¼ COR SEC 31, & S88-07-20E 5280.42 (RUGER 5274.39) TO E ¼ COR SEC 32.

FOUND ALUM. MON. 0.2' DEEP @ CENTER OF PAVMT. & REFERENCE PIPES. MONUMENT WILL BE GROUND OUT & ROAD REPAVED.

*C) Was the corner restored through acceptance of (1) an obliterated evidence location, or, (2) a found perpetuated location?*

ACCEPTED FOUND MONUMENT.

*D) Describe any material discrepancy between the location of the corner as restored or reestablished and the location of that corner as previously restored or reestablished by distance and direction. Show the discrepancy on the plan view drawing under (a), above. Show the distances between the corner as previously restored or reestablished and (1) the corner as restored or reestablished, and (2) to at least 4 of the witness monuments shown on the drawing in (a), above.*

*(E) Was the corner reestablished through lost corner proportionate methods? If so, show the method, including the directions and distances to other public land survey corners used as evidence or used for proportioning the corner location.*

I, Donald Barnes, hereby certify that the corner location as identified by the corner code index was determined by me under my direction and control and that this U.S. Public Land Survey Monument Record is correct and complete to the best of my knowledge and belief.

seal



emboss

OCT 26, 2000

Number of included sheets 1

CORNER CODE X-5

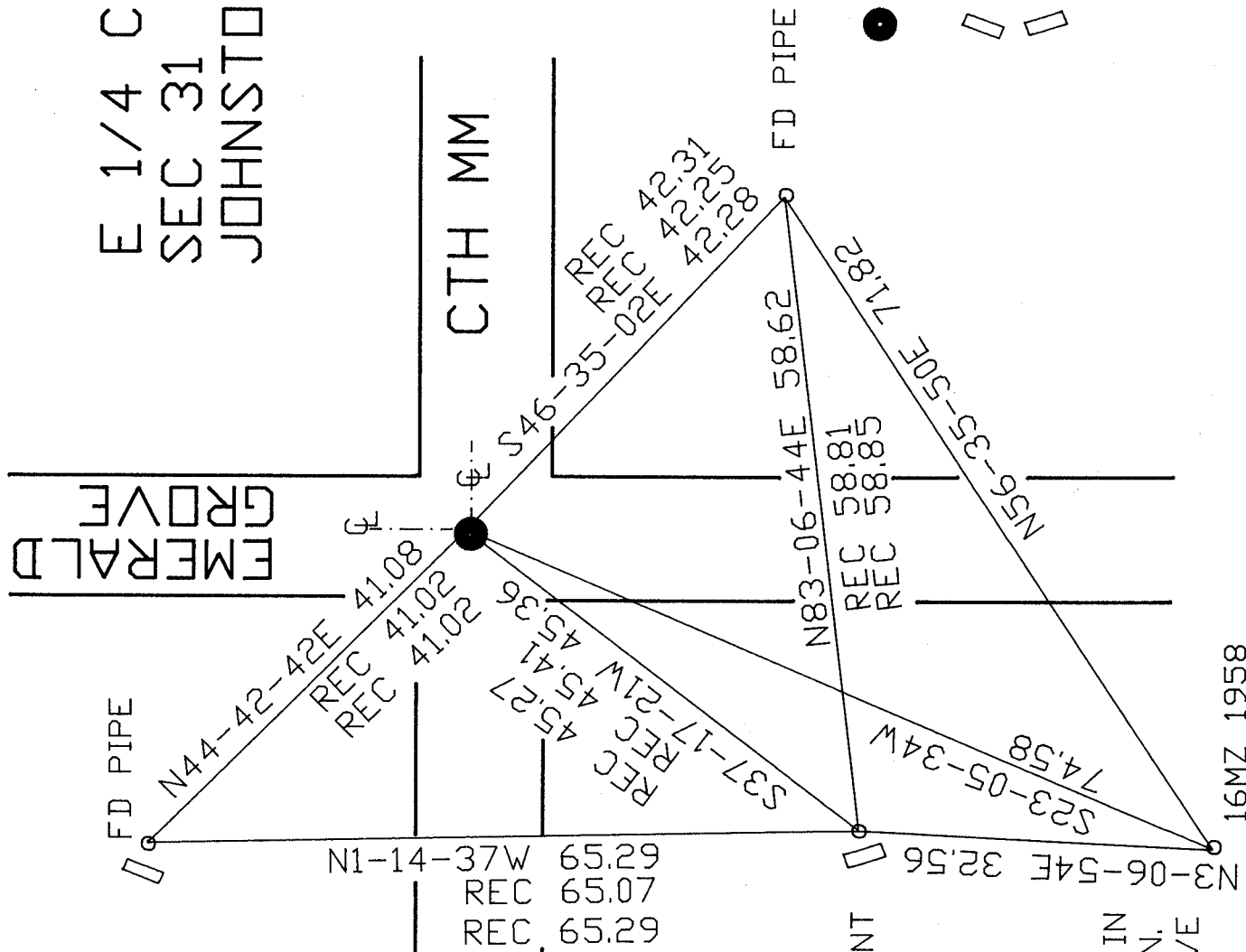
A-E 7.08 REQUIREMENT

Donald Barnes

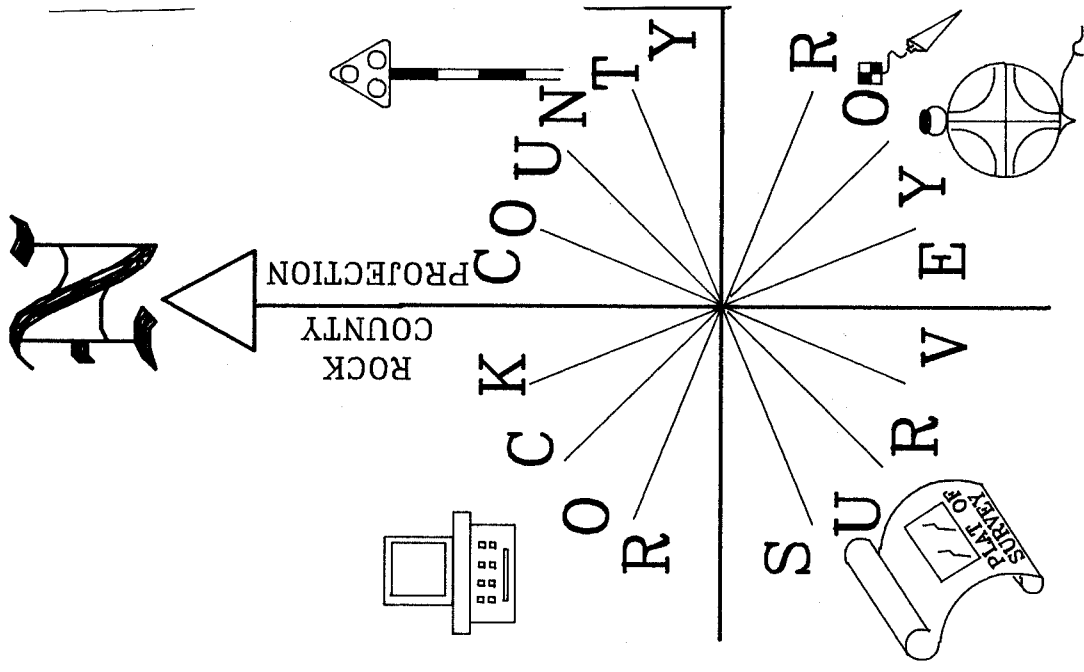
OCT 26, 2000  
EMBOSSED SEAL

E 1/4 COR  
SEC 31  
JOHNSTOWN TWP  
EMERALD GROVE

CTH MM



- FD ALUM. MON. 0.2' DEEP
- CARSONITE POST/ PIPE LINE SIGN



FD DISK IN  
CONC. MON.  
0.5' ABOVE  
GRADE

16MZ 1958

X - 5