

# U.S. PUBLIC LAND SURVEY MONUMENT RECORD

For Public Land Survey Corners in:

WI ADMINISTRATIVE CODE A-E 7.08 REQUIREMENT

T. 3 N., R. 14 E

### CORNER CODE INDEX

A	1	2	3	4	5	6	7	8	9	10	11	12	13	14	15	16	17	18	19	20	21	22	23	24	25
B																									
C	6						5					4					3						2		1
D																									
E																									
F																									
G	1						8					10					11						12		
H																									
J																									
K																									
L	18						17					16				15						14		13	
M																									
N																									
O																									
P	19						20					21				22						23		24	
Q																									
R																									
S																									
T	30						29					28				27						26		25	
U																									
V																									
W																									
X	31						32					33				34						35		36	
Y																									
Z																									

JOHNSTOWN TWP

ROCK COUNTY WI

IF AVAILABLE  
ROCK COUNTY COORDINATES PREFERRED

North \_\_\_\_\_ Elev. \_\_\_\_\_

East \_\_\_\_\_

Hor. Datum \_\_\_\_\_ Vert. Datum \_\_\_\_\_

LATITUDE \_\_\_\_\_ ELLIPS. HT. \_\_\_\_\_

LONGITUDE \_\_\_\_\_

GPS (X) \_\_\_\_\_ TRAVERSE (X) \_\_\_\_\_

BASED ON THE FOLLOWING CONTROL:

PLACE MONUMENT SYMBOL  AT PROPER LOCATION ON ABOVE INDEX

CORNER MONUMENT

WITNESS MONUMENT

(a)

BEARINGS ARE BASED ON:

FIELD BOOK \_\_\_\_\_ PAGE # \_\_\_\_\_

SHEET 1 OF 3

SHOW A PLAN VIEW DRAWING DEPICTING THE CORNER MONUMENT AND SURROUNDING PHYSICAL FEATURES, INCLUDING THE EXCAVATION AREA AND DEPTH.

PLANNING & ZONING COMMITTEE ADOPTED THE ABOVE FORM ON 12/2/1982

CORNER CODE R-5

J0583

(B) Describe any record evidence, monument evidence, occupational evidence, testimonial evidence or any other material evidence you considered, and whether the monument was found or placed.

FD BROKEN ALUM. MON 1.7' DEEP. MON IS VERY SECURE. PLACED 2 MAGNETS ON TOP OF MON. PLACED SHORT REROD ON TOP OF ALUM. MON. FD REFERENCE MONUMENTS. ALUM. WAS BROKEN BY OLD RESURFACING PROJECT

C) Was the corner restored through acceptance of (1) an obliterated evidence location, or, (2) a found perpetuated location?

ACCEPTED FD ALUM. MON.

D) Describe any material discrepancy between the location of the corner as restored or reestablished and the location of that corner as previously restored or reestablished by distance and direction. Show the discrepancy on the plan view drawing under (a), above. Show the distances between the corner as previously restored or reestablished and (1) the corner as restored or reestablished, and (2) to at least 4 of the witness monuments shown on the drawing in (a), above.

NO DISCREPANCY.

(E) Was the corner reestablished through lost corner proportionate methods? If so, show the method, including the directions and distances to other public land survey corners used as evidence or used for proportioning the corner location.

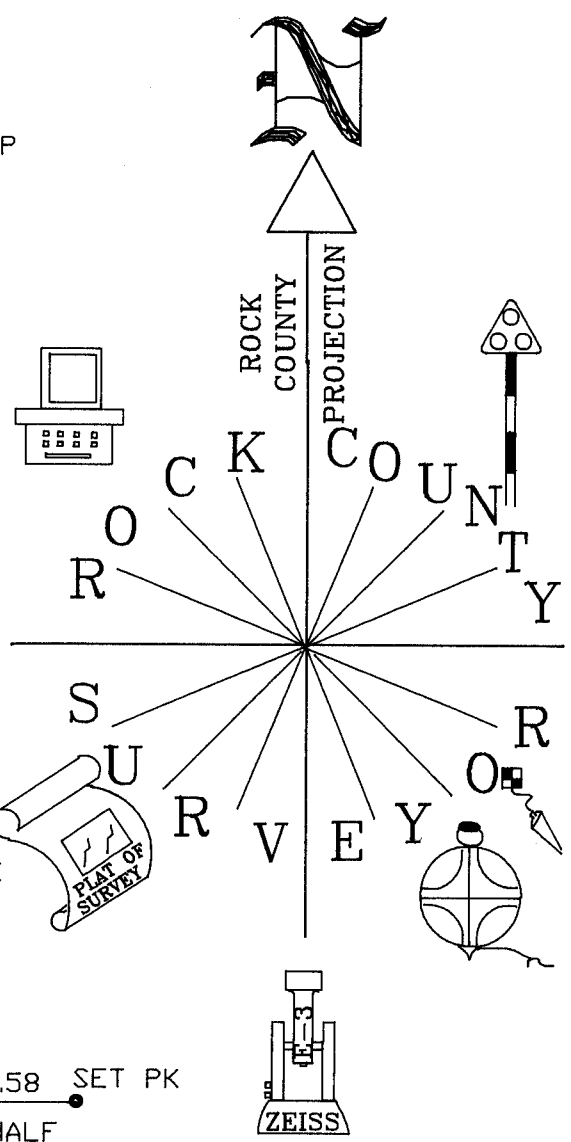
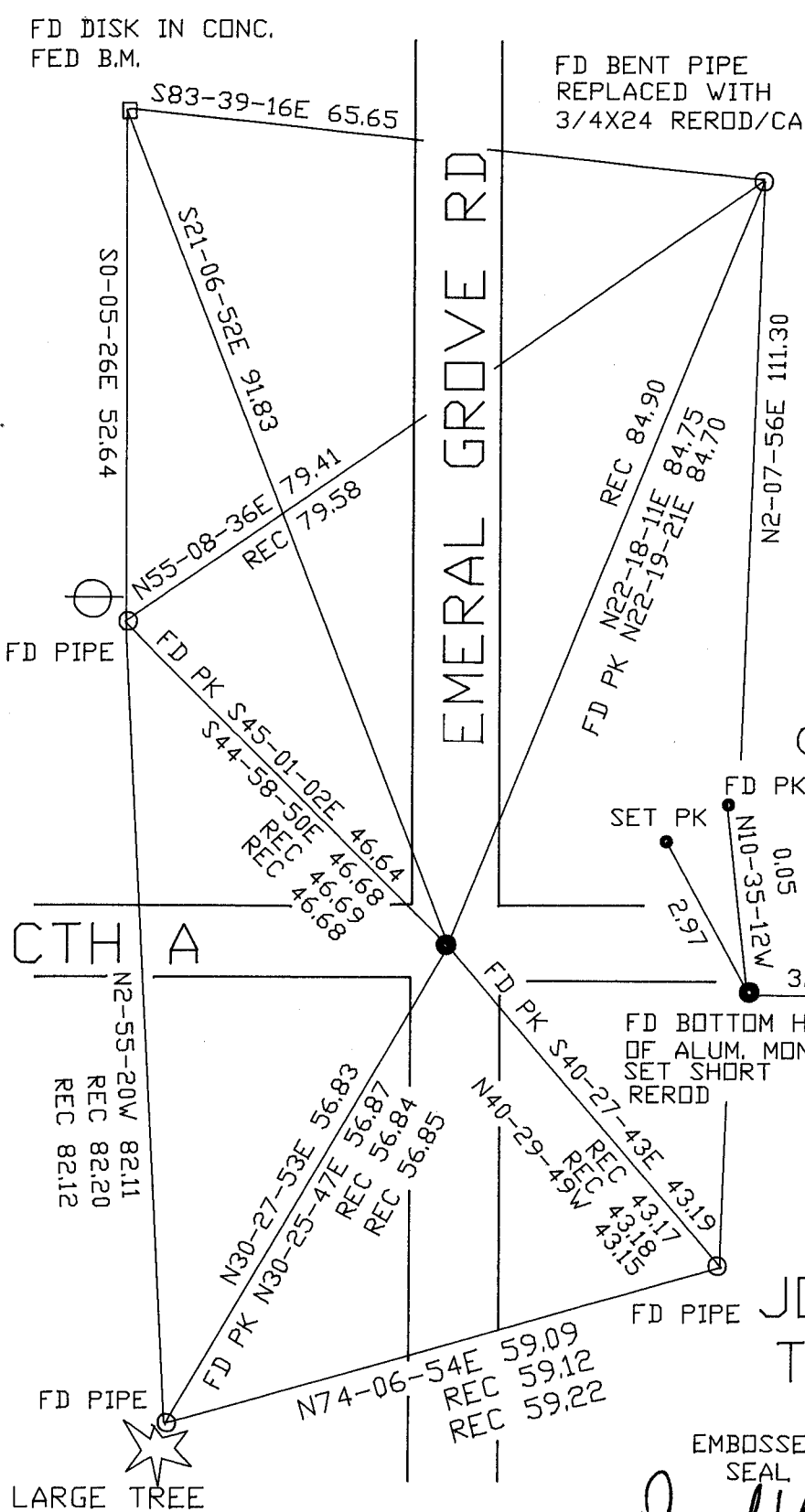
I, **Donald Barnes**, hereby certify that the corner location as identified by the corner code index was determined by me under my direction and control and that this U.S. Public Land Survey Monument Record is correct and complete to the best of my knowledge and belief.

Seal

Emboss  
*Donald Barnes*  
OCT 17 2004

SHEET 1 OF 3

CORNER CODE **R-5**  
A.E. 7.08 REQUIREMENT



NOT TO SCALE  
OBSERVATION SHEETS

SE COR  
SEC 19  
JOHNSTOWN TWP  
T3N R14E 2 OF 3  
R-5

EMBOSSSED SEAL  
*Dave Barnes*  
OCT 17 2004

FD ALUM

N1-16-59W 2644.77  
1983 TWP PROJ N1-08-23W 2644.80  
1961 BATTERMAN #2369 2643.39

Donald Barnes  
Oct 17 2004

SEPT 30  
OCT 19  
SEPT 30  
OCT 19

FD BROKEN  
ALUM MON

1961 BATTERMAN 92-51  
1961 REC R/R 92-48-23  
92-47-55

1861 RUGER 1-169 VAR5-28 2595.78  
S88-29-05E 2601.88

1861 RUGER 1-169 VAR4-58 2626.80  
S88-06-44E 2635.94

FD BROKEN  
ALUM MON

FD PIPE

30

SEPT 30

1966&1973 SHIMHAL 92-38-22  
92-05

R-5  
3 OF 3