

U.S. PUBLIC LAND SURVEY MONUMENT RECORD

For Public Land Survey Corners in:

WI ADMINISTRATIVE CODE A-E 7.08 REQUIREMENT

T. 3N., R. 13E

CORNER CODE INDEX

A	1	2	3	4	5	6	7	8	9	10	11	12	13	14	15	16	17	18	19	20	21	22	23	24	25
B																									
C	6																								
D																									
E																									
F																									
G	1																								
H																									
I																									
J																									
K																									
L	18																								
M																									
N																									
O																									
P	19																								
Q																									
R																									
S																									
T	30																								
U																									
V																									
W																									
X																									
Y																									
Z																									

HARMONY TWP

ROCK COUNTY WI

IF AVAILABLE
ROCK COUNTY COORDINATES PREFERRED

North _____ Elev. _____

East _____

Hor. Datum _____ Vert. Datum _____

LATITUDE _____ ELLIPS. HT. _____

LONGITUDE _____

GPS (X) _____ TRAVERSE (X) _____

BASED ON THE FOLLOWING CONTROL:

PLACE MONUMENT SYMBOL AT PROPER LOCATION ON ABOVE INDEX

CORNER MONUMENT

WITNESS MONUMENT

(a)

BEARINGS ARE BASED ON: _____

FIELD BOOK _____ PAGE # _____

SHEET 1 OF 2

SHOW A PLAN VIEW DRAWING DEPICTING THE CORNER MONUMENT AND SURROUNDING PHYSICAL FEATURES, INCLUDING THE EXCAVATION AREA AND DEPTH.

PLANNING & ZONING COMMITTEE ADOPTED THE ABOVE FORM ON 12/2/1982

CORNER CODE X-23

HA8619

(B) Describe any record evidence, monument evidence, occupational evidence, testimonial evidence or any other material evidence you considered, and whether the monument was found or placed.

1860 RUGER VOL 1 PG 135 SET WHITE BRICK. 2641.98 TO N ¼ COR SEC 36 & 2642.64 TO S ¼ COR SEC 36. IT APPEARS FROM THE SKETCH THAT HE INTERSECTED THE ¼ LINES.

1996 LATHROP MAP #8730 SET A R/R SPIKE AT THE INTERSECTION OF THE ¼ LINES. EAST 2658.26' TO THE E ¼ COR SEC 36, WEST 2651.56 TO W ¼ COR SEC 36, N1-39-55W 2638.20' TO N ¼ COR SEC 36, & S1-39-55E 2635.74 TO S ¼ COR SEC 36.

FOUND R/R SPIKE. PAVEMENT WILL BE GROUND AND REPAVED.

C) Was the corner restored through acceptance of (1) an obliterated evidence location, or, (2) a found perpetuated location?

DID NOT ACCEPT NOR REJECT R/R SPIKE. PERPETUATED LOCATION.

D) Describe any material discrepancy between the location of the corner as restored or reestablished and the location of that corner as previously restored or reestablished by distance and direction. Show the discrepancy on the plan view drawing under (a), above. Show the distances between the corner as previously restored or reestablished and (1) the corner as restored or reestablished, and (2) to at least 4 of the witness monuments shown on the drawing in (a), above.

(E) Was the corner reestablished through lost corner proportionate methods? If so, show the method, including the directions and distances to other public land survey corners used as evidence or used for proportioning the corner location.

I, Donald Barnes, hereby certify that the corner location as identified by the corner code index was determined by me under my direction and control and that this U.S. Public Land Survey Monument Record is correct and complete to the best of my knowledge and belief.

seal


027 25, 2000
emboss

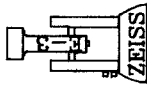
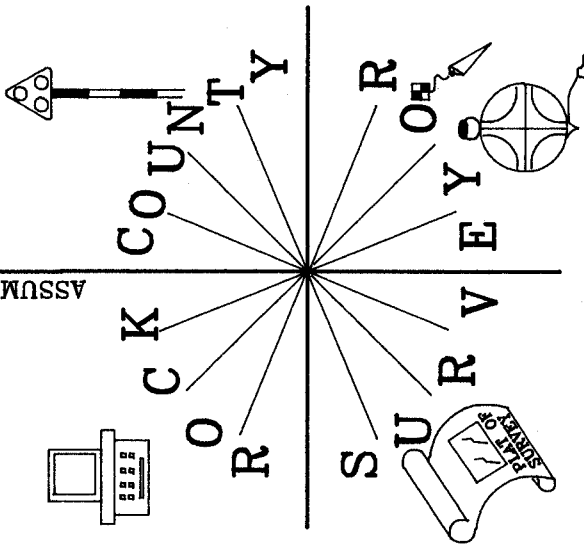
Number of included sheets **1**

CORNER CODE **X-23**

A-E 7.08 REQUIREMENT

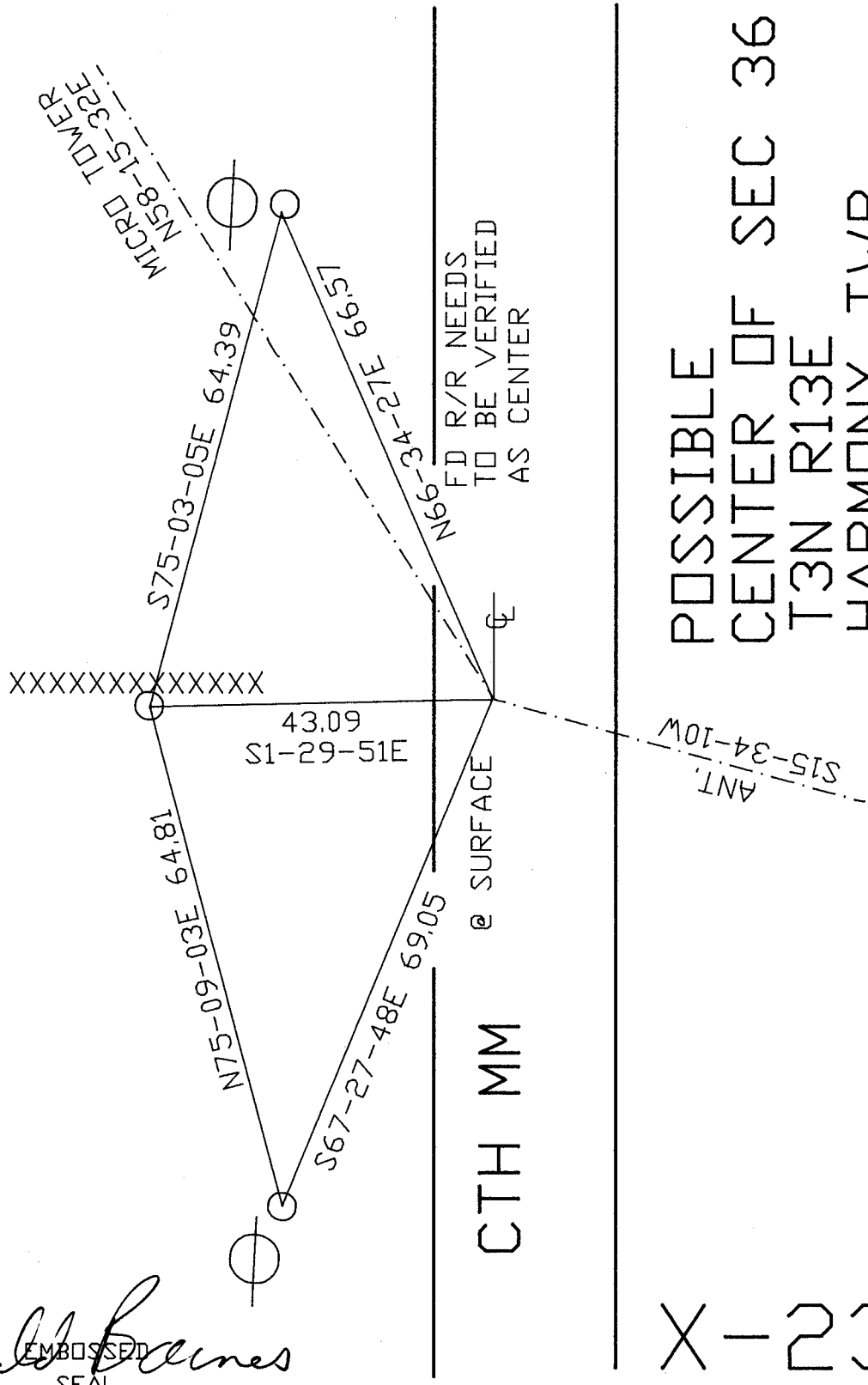
N

ASSUMED



FB #2 PG 67

○ PLACED 3/4X24 REROD/CAP
 MONUMENT WILL BE
 DESTROYED BY CONSTRUCTION



POSSIBLE
 CENTER OF SEC 36
 T3N R13E
 HARMONY TWP

Donald Barnes
 EMBOSSED SEAL

Oct 25, 2000

X-23