

U.S. PUBLIC LAND SURVEY MONUMENT RECORD

For Public Land Survey Corners in:

WI ADMINISTRATIVE CODE A-E 7.08 REQUIREMENT

T. 3 N., R. 14 E

CORNER CODE INDEX

A	1	2	3	4	5	6	7	8	9	10	11	12	13	14	15	16	17	18	19	20	21	22	23	24	25
B																									
C	6																								
D																									
E																									
F																									
G	1																								
H																									
J																									
K																									
L	18																								
M																									
N																									
O																									
P	19																								
Q																									
R																									
S																									
T	30																								
U																									
V																									
W																									
X	31																								
Y																									
Z																									

JOHNSTOWN TWP
ROCK COUNTY WI

IF AVAILABLE
ROCK COUNTY COORDINATES PREFERRED

North _____ Elev. _____

East _____

Hor. Datum _____ Vert. Datum _____

LATITUDE _____ ELLIPS. HT. _____

LONGITUDE _____

GPS (X) _____ TRAVERSE (X) _____

BASED ON THE FOLLOWING CONTROL:

PLACE MONUMENT SYMBOL AT PROPER LOCATION ON ABOVE INDEX

CORNER MONUMENT

WITNESS MONUMENT

(a)

BEARINGS ARE BASED ON:

FIELD BOOK _____ PAGE # _____

SHEET 1 OF 3

SHOW A PLAN VIEW DRAWING DEPICTING THE CORNER MONUMENT AND SURROUNDING PHYSICAL FEATURES, INCLUDING THE EXCAVATION AREA AND DEPTH.

PLANNING & ZONING COMMITTEE ADOPTED THE ABOVE FORM ON 12/2/1982

CORNER CODE R-1

J0581

(B) Describe any record evidence, monument evidence, occupational evidence, testimonial evidence or any other material evidence you considered, and whether the monument was found or placed.

ALUM. MON. DESTROYED BY OLD RESURFACING PROJECT. FD 1" PIPE 1.4' DEEP & 0.7' SOUTH OF CENTER OF PVMT. SET 2 MAGNETS NEAR TOP OF PIPE & SET 3/4" X 1.4' REROD ON TOP OF PIPE

C) Was the corner restored through acceptance of (1) an obliterated evidence location, or, (2) a found perpetuated location?

ACCEPTED FD PIPE AS FD BEFORE.

D) Describe any material discrepancy between the location of the corner as restored or reestablished and the location of that corner as previously restored or reestablished by distance and direction. Show the discrepancy on the plan view drawing under (a), above. Show the distances between the corner as previously restored or reestablished and (1) the corner as restored or reestablished, and (2) to at least 4 of the witness monuments shown on the drawing in (a), above.

NONE

(E) Was the corner reestablished through lost corner proportionate methods? If so, show the method, including the directions and distances to other public land survey corners used as evidence or used for proportioning the corner location.

I, **Donald Barnes**, hereby certify that the corner location as identified by the corner code index was determined by me under my direction and control and that this U.S. Public Land Survey Monument Record is correct and complete to the best of my knowledge and belief.

Donald Barnes

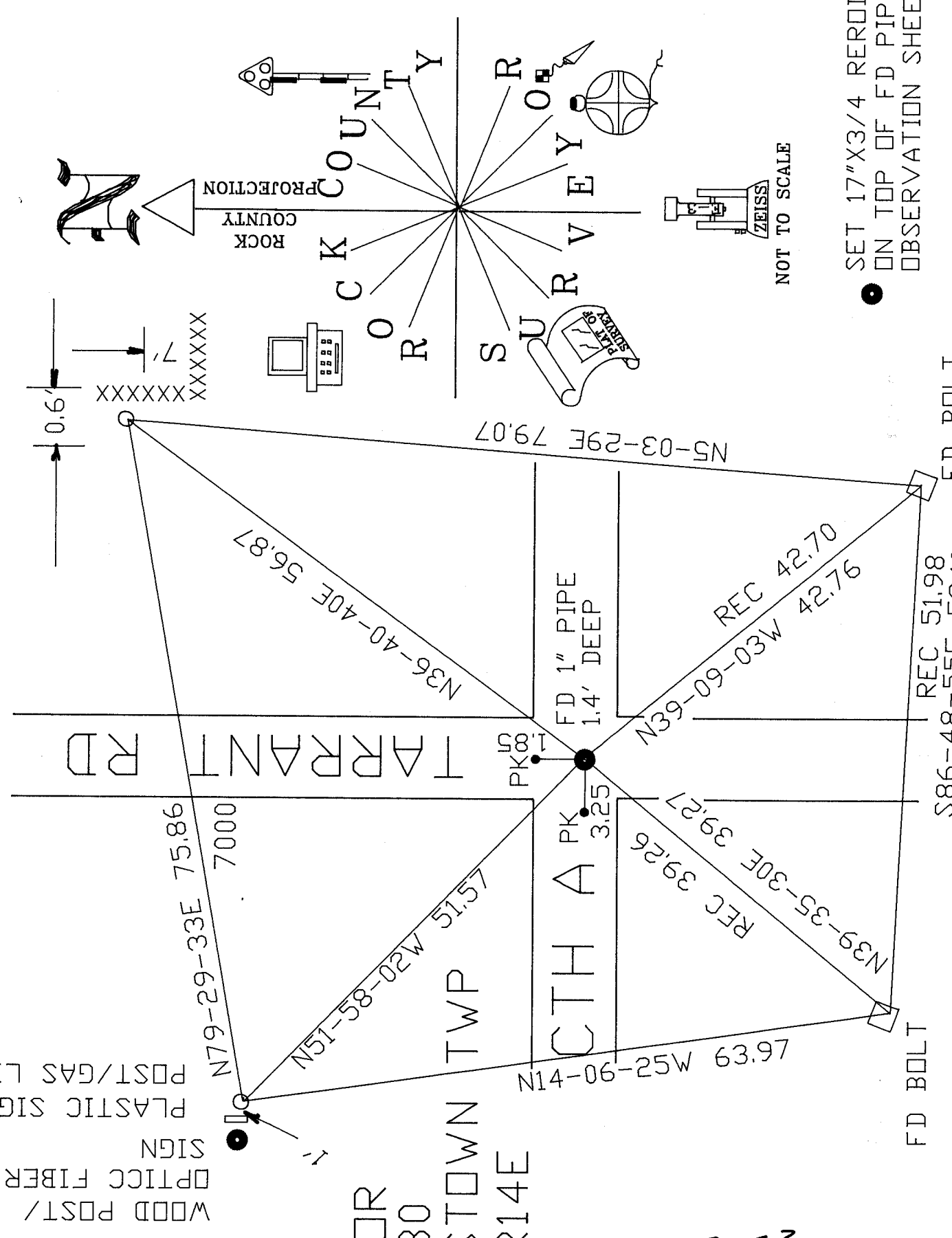
OCT 17 2004

Emboss

SHEET 1 OF 3

CORNER CODE **R-1**

A.E. 7.08 REQUIREMENT



SET 17"X3/4 REROD
 ON TOP OF FD PIPE
 OBSERVATION SHEETS

2 OF 3

R-1

Donald Barnes
 EMBOSSED
 SEAL
 OCT 17, 2004

NW COR
 SEC 30
 JOHNSTOWN TWP
 T3N R14E

FD ALUM

N1-16-59W 2644.77
1983 TWP PRD J N1-08-23W 2644.80
1961 BATTERMAN #2369 2643.39

Donald Barnes
OCT 17 2004

1961 BATTERMAN 92-51
REC R/R 92-48-23
92-47-55
S88-29-05E 2601.88
S88-06-44E 2635.94

FD BROKEN
ALUM MON

1861 RUGER 1-169 VAR5-28 2595.78

1861 RUGER 1-169 VAR4-58 2626.80

FD BROKEN
ALUM MON

FD PIPE

~~AW~~
R-1
36F3
SECT 36

1966&1973 SHIMMEL 92-05
92-38-22