

U.S. PUBLIC LAND SURVEY MONUMENT RECORD

For Public Land Survey Corners In:
T. 3N. R. 14E. 4th P.M.
CORNER CODE INDEX

WI ADMINISTRATIVE CODE A-E 7.08 REQUIREMENT
REV 10/23/2004 USMONREC.DWG

1	2	3	4	5	6	7	8	9	10	11	12	13	14	15	16	17	18	19	20	21	22	23	24	25	
A																									A
B	6																								B
C		5																							C
D			4																						D
E				3																					E
F					2																				F
G						1																			G
H																									H
I																									I
J																									J
K																									K
L																									L
M																									M
N																									N
O																									O
P																									P
Q																									Q
R																									R
S																									S
T																									T
U																									U
V																									V
W																									W
X																									X
Y																									Y
Z																									Z

Johnstown TWP
ROCK COUNTY WI

IF AVAILABLE
ROCK COUNTY COORDINATES PREFERRED

North _____ Elev. _____

East _____

Hor. Datum _____ Vert. Datum _____

LATITUDE _____ ELLIPS. HT. _____

LONGITUDE _____

NAD83(91) _____ NETWORK ADJ. YR _____

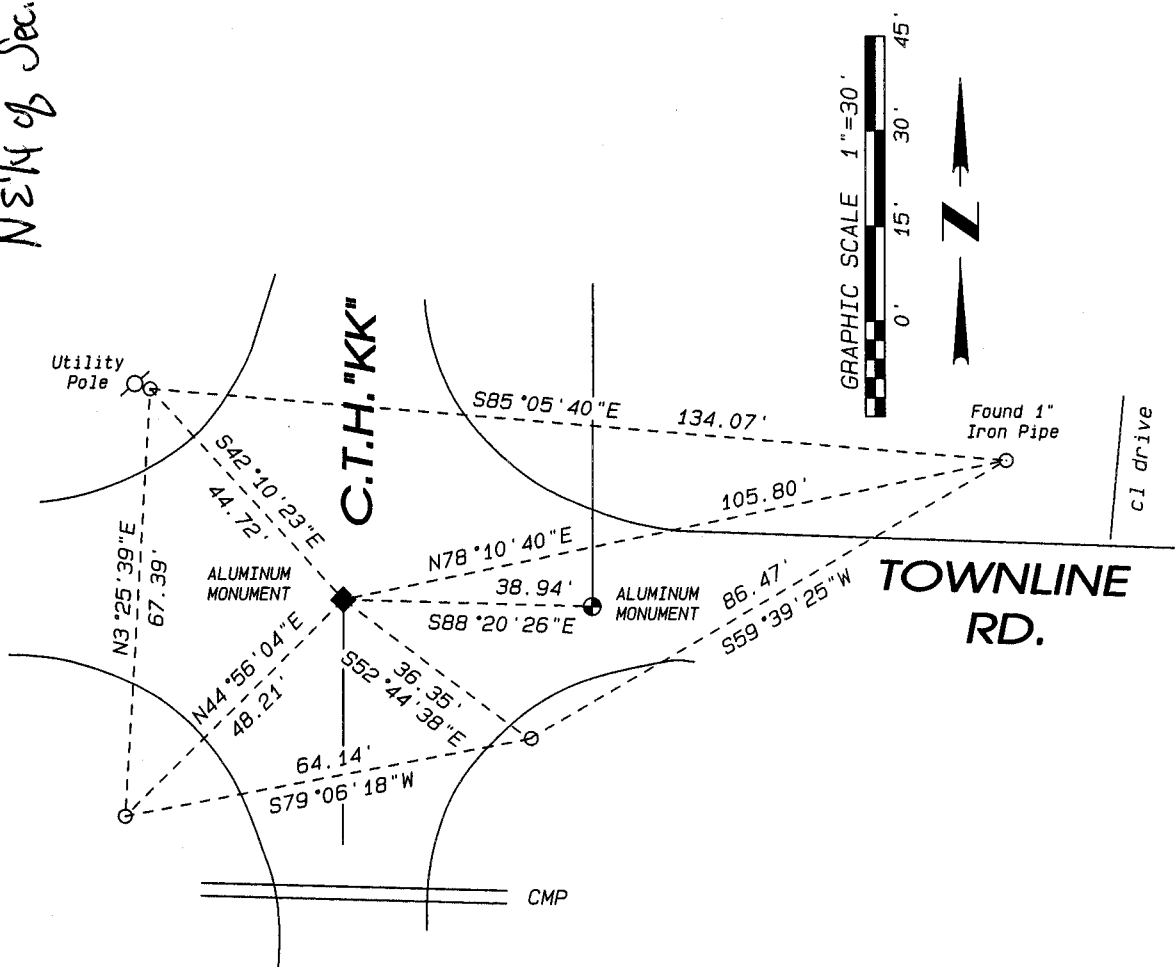
GPS (X) _____ TRAVERSE (X) _____

BASED ON THE FOLLOWING CONTROL:

◆ CORNER MONUMENT

○ WITNESS MONUMENT - Set 1/2" x 18" Iron Rebar

(a)
BEARINGS ARE BASED ON: Assumed Datum
Assumed S1°07'45"E along the East Line of the
NE 1/4 of Sec. 5-3-14.



FIELD BOOK _____ PAGE # _____

SHEET 1 OF 2

SHOW A PLAN VIEW DRAWING DEPICTING THE CORNER MONUMENT AND SURROUNDING PHYSICAL FEATURES, INCLUDING THE EXCAVATION AREA AND DEPTH.

PLANNING & ZONING COMMITTEE ADOPTED THIS FORM ON 12/2/1982

CORNER CODE A-9

(B) Describe any record evidence, monument evidence, occupational evidence, testimonial evidence or any other material evidence you considered, and whether the monument was found or placed.

Found aluminum monument of Record

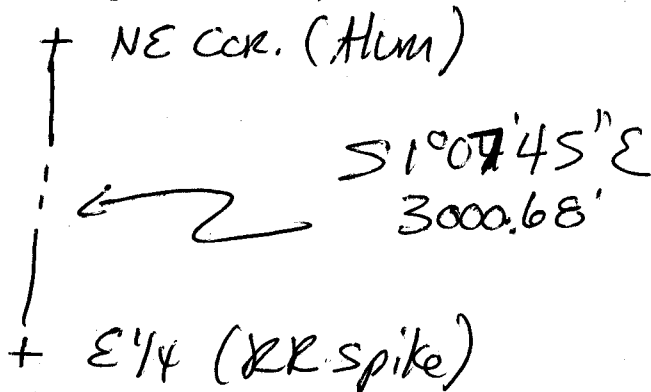
C) Was the corner restored through acceptance of (1) an obliterated evidence location, or, (2) a found perpetuated location?

Found perpetuated Location

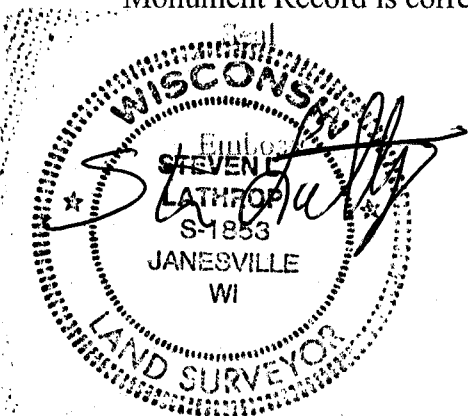
D) Describe any material discrepancy between the location of the corner as restored or reestablished and the location of that corner as previously restored or reestablished by distance and direction. Show the discrepancy on the plan view drawing under (a), above. Show the distances between the corner as previously restored or reestablished and (1) the corner as restored or reestablished, and (2) to at least 4 of the witness monuments shown on the drawing in (a), above.

Set 3 additional witness monuments

(E) Was the corner reestablished through lost corner proportionate methods? If so, show the method, including the directions and distances to other public land survey corners used as evidence or used for proportioning the corner location.



I, Steven Lathrop hereby certify that the corner location as identified by the corner code index was determined by me under my direction and control and that this U.S. Public Land Survey Monument Record is correct and complete to the best of my knowledge and belief.



4-17-12

SHEET 2 OF 2

CORNER CODE

A.E. 7.08 REQUIREMENT

A-9