

# U.S. PUBLIC LAND SURVEY MONUMENT RECORD

For Public Land Survey Corners in:

WI ADMINISTRATIVE CODE A-E 7.08 REQUIREMENT

T. 3N., R. 14E

### CORNER CODE INDEX

A	1	2	3	4	5	6	7	8	9	10	11	12	13	14	15	16	17	18	19	20	21	22	23	24	25
B																									
C	6																								
D																									
E																									
F																									
G	1																								
H																									
I																									
J																									
K																									
L	18																								
M																									
N																									
O																									
P	19																								
Q																									
R																									
S																									
T	30																								
U																									
V																									
W																									
X	31																								
Y																									
Z																									

JOHNSTOWN TWP

**ROCK COUNTY WI**

IF AVAILABLE  
ROCK COUNTY COORDINATES PREFERRED

North \_\_\_\_\_ Elev. \_\_\_\_\_

East \_\_\_\_\_

Hor. Datum \_\_\_\_\_ Vert. Datum \_\_\_\_\_

LATITUDE \_\_\_\_\_ ELLIPS. HT. \_\_\_\_\_

LONGITUDE \_\_\_\_\_

GPS (X) \_\_\_\_\_ TRAVERSE (X) \_\_\_\_\_

BASED ON THE FOLLOWING CONTROL:

PLACE MONUMENT SYMBOL  AT PROPER LOCATION ON ABOVE INDEX

CORNER MONUMENT

WITNESS MONUMENT

(a)

BEARINGS ARE BASED ON:

FIELD BOOK \_\_\_\_\_ PAGE # \_\_\_\_\_

SHEET 1 OF 2

SHOW A PLAN VIEW DRAWING DEPICTING THE CORNER MONUMENT AND SURROUNDING PHYSICAL FEATURES, INCLUDING THE EXCAVATION AREA AND DEPTH.

PLANNING & ZONING COMMITTEE ADOPTED THE ABOVE FORM ON 12/2/1982

CORNER CODE X 9

J0616

*(B) Describe any record evidence, monument evidence, occupational evidence, testimonial evidence or any other material evidence you considered, and whether the monument was found or placed.*

- 1860 RUGER VOL 1 PG 138 SET LIMESTONE 15X7X4 & SET LIMESTONE ON THE NORTH & SOUTH SIDES. 2633.07' VAR 5-13 TO CENTER OF SEC 33 & 5266.14' TO E ¼ COR SEC 33.
- 1885 RUGER VOL 2 PG 288 STATES NOTHING ABOUT MONUMENT. 5274.39' TO W ¼ COR SEC 32 & 2646.01' TO CENTER OF SEC 32.
- 1972 LEE VOL 4 PG 571 C.S. DUG & FOUND 4X7 LIMESTONE WITH L.S. ON NORTH & SOUTH SIDES. SET C.I. & REFERENCED SAME.
- 1981 BARNES VOL 6 PG 193 ADDED RISERS TO C.I.

FOUND CAST IRON MON. 0.1' DEEP & SOUTH REFERENCE PIPE. CORNER IS 3.1' NORTH OF CENTER OF PVMT. MONUMENT WILL BE GROUND OUT & ROAD REPAVED.

*C) Was the corner restored through acceptance of (1) an obliterated evidence location, or, (2) a found perpetuated location?*


ACCEPTED FOUND MONUMENT.

*D) Describe any material discrepancy between the location of the corner as restored or reestablished and the location of that corner as previously restored or reestablished by distance and direction. Show the discrepancy on the plan view drawing under (a), above. Show the distances between the corner as previously restored or reestablished and (1) the corner as restored or reestablished, and (2) to at least 4 of the witness monuments shown on the drawing in (a), above.*

*(E) Was the corner reestablished through lost corner proportionate methods? If so, show the method, including the directions and distances to other public land survey corners used as evidence or used for proportioning the corner location.*

I, Donald Barnes, hereby certify that the corner location as identified by the corner code index was determined by me under my direction and control and that this U.S. Public Land Survey Monument Record is correct and complete to the best of my knowledge and belief.

seal

  
OCT 26, 2000  
emboss

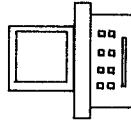
Number of included sheets **1**

CORNER CODE **X-9**

A-E 7.08 REQUIREMENT

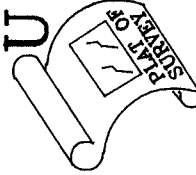
**A**

ASSUMED



C O U N T Y  
C O U N T Y

S U R V E Y  
S U R V E Y



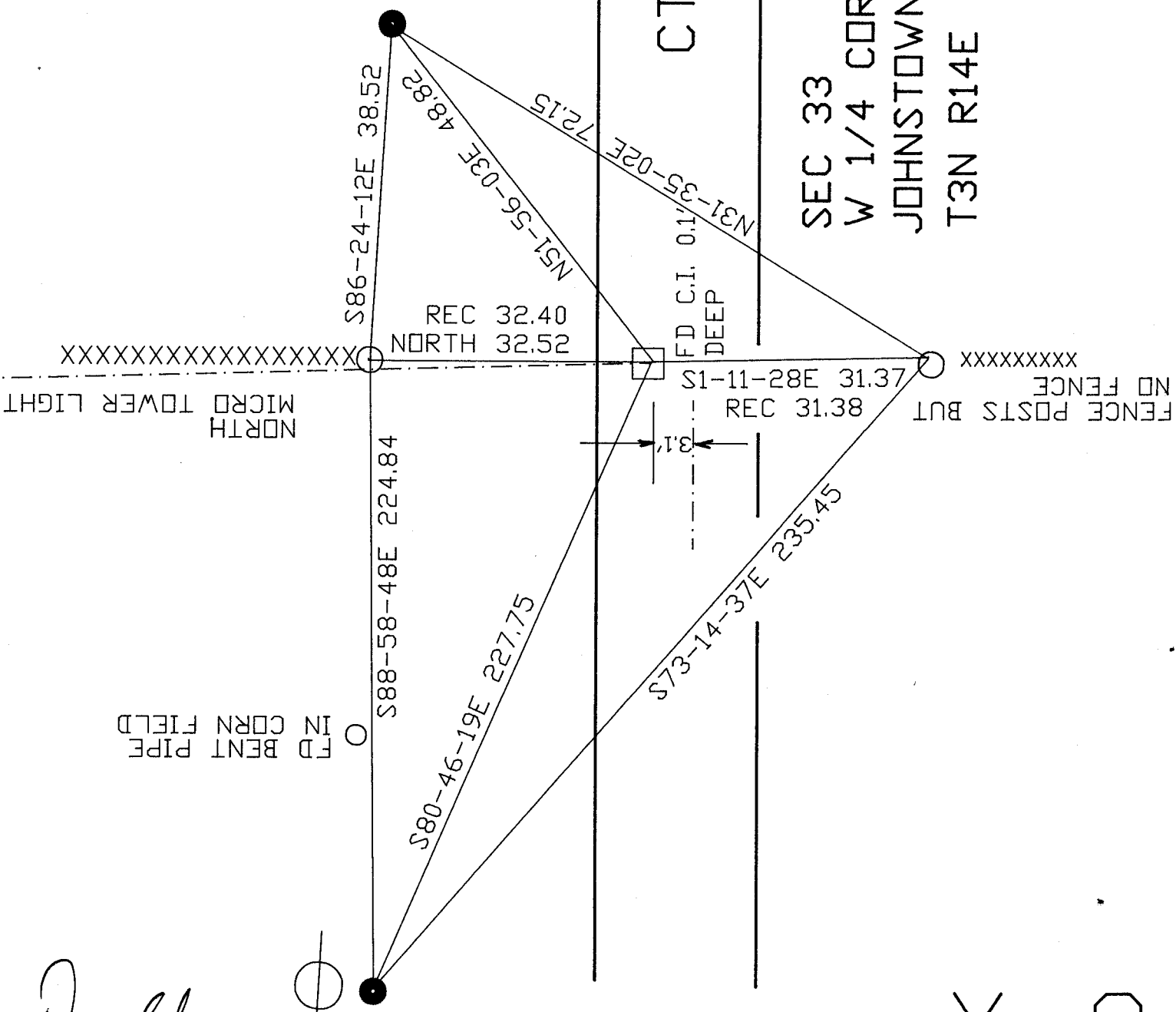
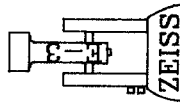
CTH MM

SEC 33  
W 1/4 COR  
JOHNSTOWN TWP  
T3N R14E

FB #2 PG 36

● 3/4X24" REROD/ CAP

○ FD 1" PIPE



FD BENT PIPE  
IN CORN FIELD

*Donald Barnes*  
EMBOSS SEAL  
OCT 26, 2000

X

9