

U.S. PUBLIC LAND SURVEY MONUMENT RECORD

For Public Land Survey Corners in:
T. 3 N., R. 14 E.

WI ADMINISTRATIVE CODE A-E 7.08 REQUIREMENT

CORNER CODE INDEX

A	1	2	3	4	5	6	7	8	9	10	11	12	13	14	15	16	17	18	19	20	21	22	23	24	25
B																									
C	6	5	A	3	2	1																			
D																									
E																									
F	7	8	9	10	11	12																			
G																									
H																									
I																									
J																									
K	18	17	◆	16	15	14	13																		
L																									
M																									
N																									
O	19	20	21	22	23	24																			
P																									
Q																									
R	30	29	28	27	26	25																			
S																									
T																									
U																									
V																									
W																									
X																									
Y																									
Z																									

Johnstown TWP
ROCK COUNTY WI

IF AVAILABLE
ROCK COUNTY COORDINATES PERFERRED

North _____ Elev. _____

East _____

Hor. Datum _____ Vert. Datum _____

LATITUDE _____ ELLIPS. HT. _____

LONGITUDE _____

GPS (X) _____ TRAVERSE (X) _____

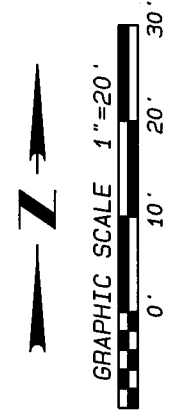
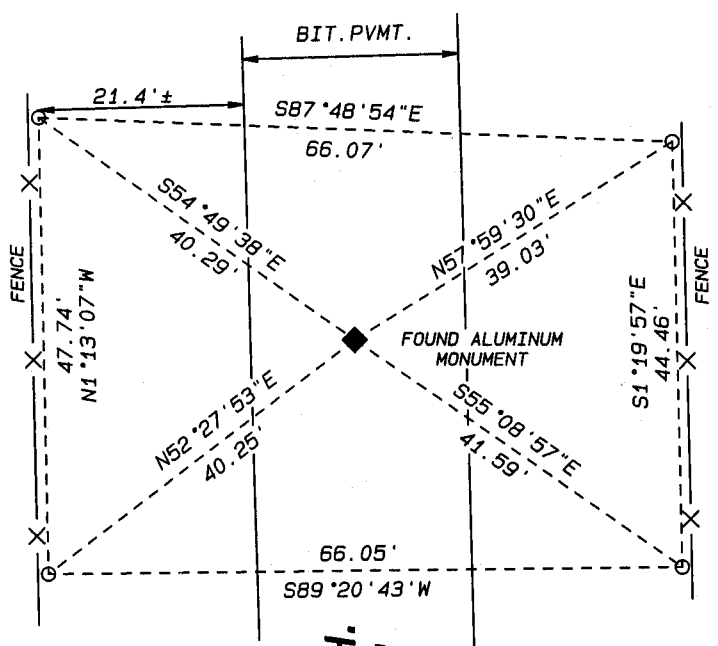
BASED ON THE FOLLOWING CONTROL:

PLACE MONUMENT SYMBOL ◆ AT PROPER LOCATION ON ABOVE INDEX

◆ CORNER MONUMENT
Fd. Aluminum Mon.

○ WITNESS MONUMENT - Set 3/4" x 24" round iron rebar, 1.5 lbs./lin.ft.

BEARINGS ARE BASED ON: Assumed datum



C.T.H.
"KK"

FIELD BOOK _____ PAGE # _____

SHEET 1 OF 2

SHOW A PLAN VIEW DRAWING DEPICTING THE CORNER MONUMENT AND SURROUNDING PHYSICAL FEATURES, INCLUDING THE EXCAVATION AREA AND DEPTH.

PLANNING & ZONING COMMITTEE ADOPTED THE ABOVE FORM ON 12/2/1982

CORNER CODE L-9

(B) Describe any record evidence, monument evidence, occupational evidence, testimonial evidence or any other material evidence you considered, and whether the monument was found or placed.

Found aluminum monument, Checked county coordinates.
Set 4 reference monuments

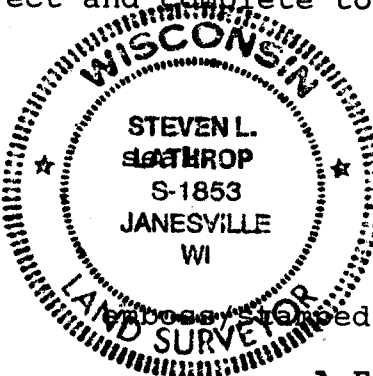
C) Was the corner restored through acceptance of (1) an obliterated evidence location, or, (2) a found perpetuated location?

Found perpetuated location.

D) Describe any material discrepancy between the location of the corner as restored or reestablished and the location of that corner as previously restored or reestablished by distance and direction. Show the discrepancy on the plan view drawing under (a), above. Show the distances between the corner as previously restored or reestablished and (1) the corner as restored or reestablished, and (2) to at least 4 of the witness monuments shown on the drawing in (a), above.

(E) Was the corner reestablished through lost corner proportionate methods? If so, show the method, including the directions and distances to other public land survey corners used as evidence or used for proportioning the corner location.

I, Steven Lathrop, hereby certify that the corner location as identified by the corner code index was determined by me under by direction and control and that this U.S. Public Land Survey Monument Record is correct and complete to the best of my knowledge and belief.



Steven Lathrop
Oct. 15, 2008

Number of included sheets 2

A-E 7.08 REQUIREMENT

CORNER CODE

L-9