

U.S. PUBLIC LAND SURVEY MONUMENT RECORD

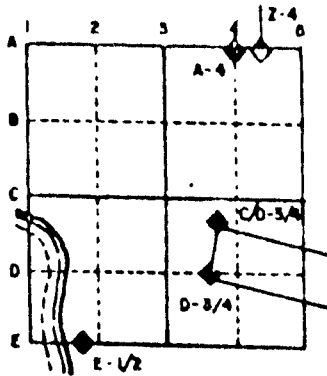
For Public Land Survey Corners in the
T. 4 N., R. 1 E.

CORNER CODE INDEX

	1	2	3	4	5	6	7	8	9	10	11	12	13	14	15	16	17	18	19	20	21	22	23	24	25
A																									
B																									
C	6																								
D		5																							
E			4																						
F				3																					
G					2																				
H																									
I	7																								
J		8																							
K			9																						
L				10																					
M					11																				
N						12																			
O							13																		
P								14																	
Q									15																
R										16															
S											17														
T												18													
U													19												
V														20											
W															21										
X																22									
Y																	23								
Z																		24							
																			25						
																				26					
																					27				
																						28			
																							29		
																								30	
																									31
																									32
																									33
																									34
																									35
																									36

PLACE MONUMENT SYMBOL (◆) AT PROPER LOCATION ON ABOVE INDEX

EXAMPLE



PORTER TWP
ROCK COUNTY WI

IF AVAILABLE
STATE PLANE COORDINATES

North (Y) 328,725.14 Eleve. (Z) _____
East (X) 450,724.93 Zone _____
Hor. Datum COUNTY Vert. Datum _____

◆ CORNER MONUMENT ○ WITNESS MONUMENT

BEARINGS ARE BASED ON: ASSUMED

MICROFILMED

SHEET 1 OF 1

CORNER CODE: A 15

(B) Describe any record evidence, monument evidence, occupational evidence, testimonial evidence or any other material evidence you considered, and whether the monument was found or placed.

1872 LEE VOL 2 PG 82 SET BR O. STAKE 2 FT HIGH & 4" IN DIAMETER. SHOWS 2657.72 TO NW AND NE CORNERS OF SECTION 3. FOUND STONE & STUMPS OF BTS AT S 1/4 CORNER OF SECTION 34 DUNKIRK TWP. SHOWS A VAR OF 8-00 FOR NORTH LINE OF SECTION. PLACED W.O. STAKE WITH HHS AT E 1/16th CORNER OF THE NW 1/4. SHOWS A DISTANCE OF 1292.50 TO E 1/16th CORNER AND 2596.11 TO CENTER OF SECTION 3.

1882 LEE VOL 2 PG 372 FOUND REMAINS OF STAKE SET BY SELF IN 1872. SET A HH 17X14X9. SHOWS 1288.48 TO E 1/16th CORNER OF THE NW 1/4 THAT HE PLACED IN 1872. SHOWS 2596.11 TO CENTER OF SECTION 3. ALSO SHOWS 2649.90 TO NE CORNER OF SECTION 3.

DUG 6' AND DID NOT FIND THE CORNER. ELDERLY PROPERTY OWNER STATED THAT MANY YEARS AGO, SOMEONE WITH A BACKHOE ALSO TRIED TO FIND THE CORNER AND THE S 1/4 CORNER OF SECTION 34. OWNER ALSO STATED THAT THEY DUG FOR THE N 1/16th CORNER OF THE NE 1/4. I FOUND OLD SPOILS WHILE DIGGING. ESTABLISHED CORNER AT MID POINT BETWEEN THE NE AND NW CORNERS OF SECTION 3. USED THE CENTER OF ROAD TO CONTROL N/S POSITION OF CORNER. THIS IS IN HARMONY WITH THE FENCE INTERSECTION AT THE E 1/16 CORNER OF THE NW 1/4 AND LEE'S 1872 DISTANCE. THE N 1/16 TH CORNERS AT THE NE AND NW 1/4 OF SECTION 3 WILL BE IN THE CENTER OF THE PAVEMENT. ALSO DUG AND FOUND NOTHING AT THE S 1/4 CORNER OF SECTION 34.

OWNER ALSO STATED THAT THE HIGHWAY DEPARTMENT GRADED ABOUT 1 TO 2 FEET OFF THE TOP OF THE ROAD SURFACE.

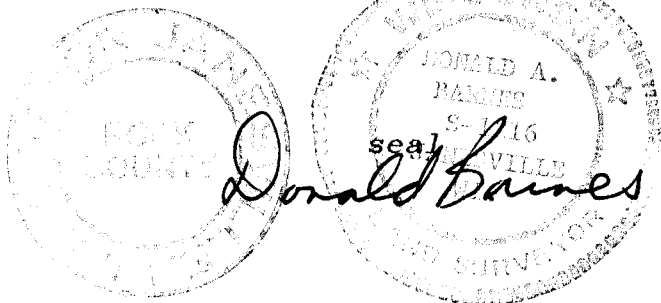
C) Was the corner restored through acceptance of (1) an obliterated evidence location, or, (2) a found perpetuated location?

ACCEPTED OBLITERATED EVIDENCE LOCATION.

D) Describe any material discrepancy between the location of the corner as restored or reestablished and the location of that corner as previously restored or reestablished by distance and direction. Show the discrepancy on the plan view drawing under (a), above. Show the distances between the corner as previously restored or reestablished and (1) the corner as restored or reestablished, and (2) to at least 4 of the witness monuments shown on the drawing in (a), above.

(E) Was the corner reestablished through lost corner proportionate methods? If so, show the method, including the directions and distances to other public land survey corners used as evidence or used for proportioning the corner location.
NO

I, Donald Barnes, hereby certify that the corner points as identified by the corner code index were, in a field survey on, May 16, 1991, established, re-established, monumented, re-monumented, recovered or restored as expressed below and in conformance with the regulations and rules as required in the current manual of survey instructions of the United States Department of Interior, Bureau of Land Management.



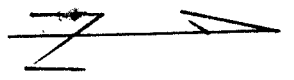
AFFIX YOUR LAND SURVEYOR SEAL

COUNTY SURVEYOR FILING DATA

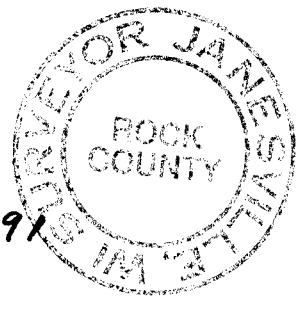
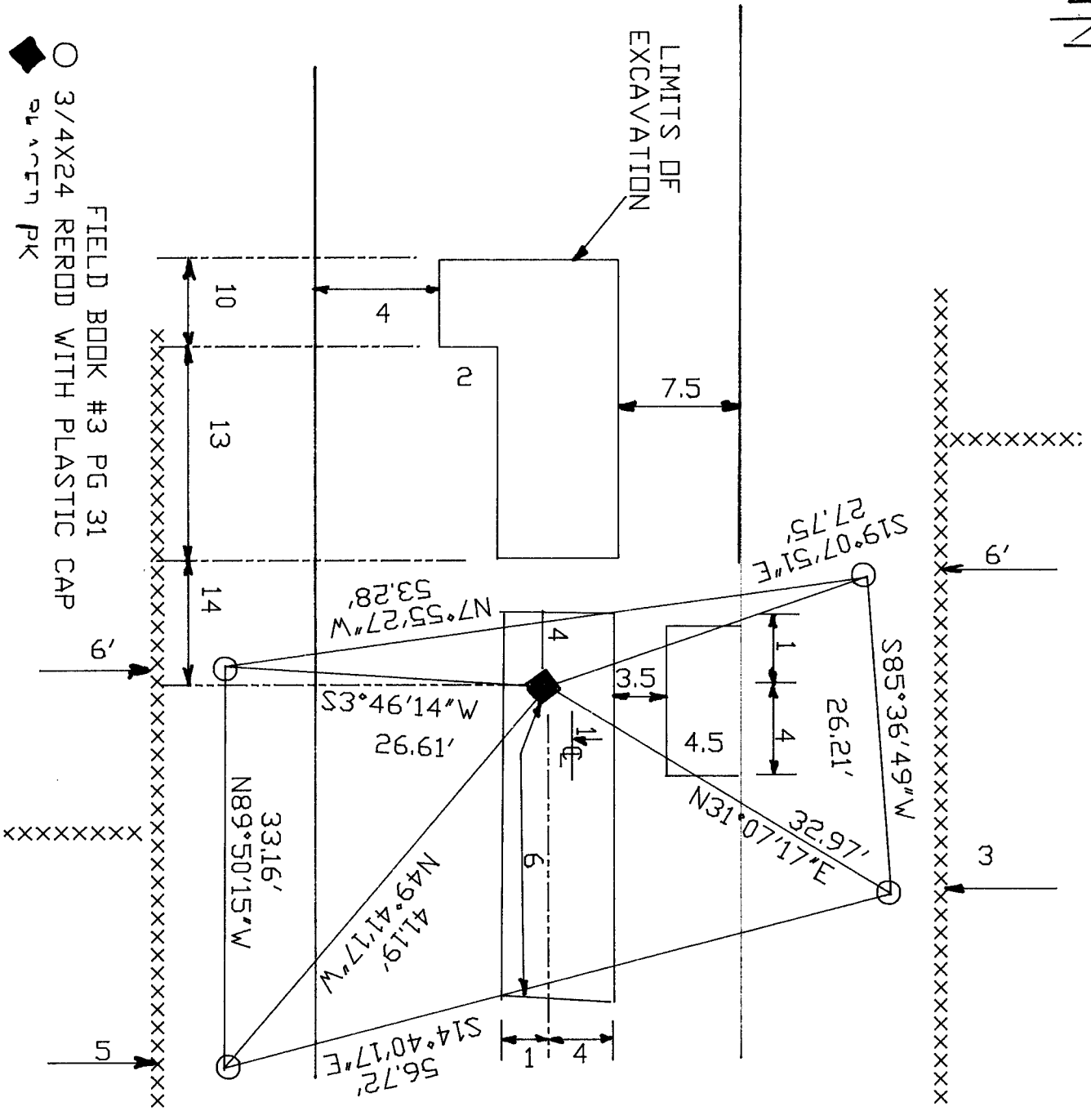
Date of computer entry _____

Date microfilmed _____

Number of included sheets 1
CORNER CODE



FIELD BOOK #3 PG 31
 3/4X24 REROD WITH PLASTIC CAP
 91.00 FT PK



2 OF 2
 A 15