

Paper weight-110# (minimum)

Black nonfading ink required

U.S. PUBLIC LAND SURVEY MONUMENT RECORD

For Public Land Survey Corners In:

WI ADMINISTRATIVE CODE A-E 7.08 REQUIREMENT

T. 4N. R. 11E. 4th P.M.

REV 10/23/2004

USMONREC.DWG

CORNER CODE INDEX

PORTER TWP

ROCK COUNTY WI

IF AVAILABLE

ROCK COUNTY COORDINATES PREFERRED

North _____ Elev. _____

East _____

Hor. Datum _____ Vert. Datum _____

LATITUDE _____ ELLIPS. HT. _____

LONGITUDE _____

NAD83(91) _____ NETWORK ADJ. YR _____

GPS (X) _____ TRAVERSE (X) _____

BASED ON THE FOLLOWING CONTROL:

	1	2	3	4	5	6	7	8	9	10	11	12	13	14	15	16	17	18	19	20	21	22	23	24	25		
A																											A
B																											B
C																											C
D																											D
E																											E
F																											F
G																											G
H																											H
J																											J
K																											K
L																											L
M																											M
N																											N
O																											O
P																											P
Q																											Q
R																											R
S																											S
T																											T
U																											U
V																											V
W																											W
X																											X
Y																											Y
Z																											Z

PLACE MONUMENT SYMBOL AT PROPER LOCATION ON ABOVE INDEX

CORNER MONUMENT

WITNESS MONUMENT

(a)

BEARINGS ARE BASED ON: _____

FIELD BOOK _____ PAGE # _____

SHEET 1 OF 3

SHOW A PLAN VIEW DRAWING DEPICTING THE CORNER MONUMENT AND SURROUNDING PHYSICAL FEATURES, INCLUDING THE EXCAVATION AREA AND DEPTH.

PLANNING & ZONING COMMITTEE ADOPTED THIS FORM ON 12/2/1982

CORNER CODE X-5

PO615

W1/4CORSEC32

(B) Describe any record evidence, monument evidence, occupational evidence, testimonial evidence or any other material evidence you considered, and whether the monument was found or placed.

1833 HARRISON (NOV) T4N R11E 4TH MER. NORTH
BET. 31 & 32

1524.6 BURR OAK 12 IN DIAM.
2381.28 TRAIL N.E.
2640.0 QUARTER SEC COR
{BUR OAK 10 N88E 29.70' ; BURR OAK 20
N65E 85.80' {BURR OAK 10 ; BURR OAK
20}MARKED
4072.86 BURR OAK 12 IN DIAM
5280.0 SET POST FOR COR TO SEC 29,30,31,32
{BURR OAK 12 S8W 52.14'; BURR OAK 12
N68E 38.28'; BURR OAK 10 N42W 93.06';
BURR OAK 14 S44E 123.42'
LAND ROLLING 2ND RATE WITH RED & BURR
OAK TIMBER

1875 RUGER VOL 2 PG 165 & #3652 DROVE STAKE DEEP & PUT
ON TOP OF IT HH STONE 15X10X8 & SURROUNDED IT BY 4
HH STONES. VAR 7-15 2667.06 TO NW & VAR 7-15' 2667.06
TO SW CORNERS OF SEC 32. VAR 7-40 1326.93 TO
SANDSTONE 20X7X6 @ S 1/16TH COR OF NE 1/4 SEC 31,
VAR 7-40 2653.86 TO CENTER OF SEC 31, VAR 7-40
5253.27 TO W 1/4 COR SEC 31. VAR INDICATES THE COR
WAS PLACED MIDWAY & ON LINE WITH NW & SW CORNERS OF
SEC 32

1875 RUGER VOL 2 PG 184 SEE PG 121. USED TO SUBDIVIDE SEC
32, VAR 6-41 5311.35 TO E 1/4 COR SEC 32, VAR 6-41
2658.15 TO CENTER OF SEC 32

1976 BARNES VOL 5 PG 182 FD HH 15X10X8 SURROUNDED BY 4
HH. REFERENCED SAME. ON WEST SIDE OF N/S FENCE.
FB#1 PG 11 & 14 REPLACED STONE WITH ALUM. MON.

1993 KARNS #10028 N00-18-13W 473.05 TO IRON STAKE ON
SOUTH R/W OF USH 14, S00-27-20E 2651.62 TO SE COR
SEC 31.

FD ALUM MON & 3 REF. MONUMENTS. SET CARSONITE POST 1.0 SE.
ALUM IS 0.82' WEST OF LINE BETWEEN THE SE & NE CORNERS OF
SEC 31. FD RUGER'S STAKE @ GEN OF SEC 32 IS 1.23' SOUTH OF
LINE BETWEEN E & W 1/4 CORNERS OF SEC 32. IS IN HARMONY WITH
PRORATION OF RUGER'S MEASUREMENTS.

C) Was the corner restored through acceptance of (1) an obliterated evidence location, or, (2) a found
perpetuated location?

ACCEPTED FD ALUM. MON. THAT REPLACED FD HH SURROUNDED BY
4 HHS IN 1976.

D. L. Baines
Emboss
SEAL Nov 4 2009

SHEET 1 OF 3

CORNER CODE X-5

PO615 W1/4CORSEC32

D) Describe any material discrepancy between the location of the corner as restored or reestablished and the location of that corner as previously restored or reestablished by distance and direction. Show the discrepancy on the plan view drawing under (a), above. Show the distances between the corner as previously restored or reestablished and (1) the corner as restored or reestablished, and (2) to at least 4 of the witness monuments shown on the drawing in (a), above.

KARN'S 1993 DISTANCE OF 2651.62 TO SE COR SEC 31 DOES NOT AGREE WITH MY DISTANCE OF 2669.89 (18.27'). DID NOT FIND ANYTHING AT KARN'S DISTANCE.

(E) Was the corner reestablished through lost corner proportionate methods? If so, show the method, including the directions and distances to other public land survey corners used as evidence or used for proportioning the corner location.

RUGER'S 1875 RECORD (VOL 2 PG 165 & #3652) INDICATES HE DECLARED CORNER LOST.

I, **Donald Barnes**, hereby certify that the corner location as identified by the corner code index was determined by me under my direction and control and that this U.S. Public Land Survey Monument Record is correct and complete to the best of my knowledge and belief.

Donald

Barnes

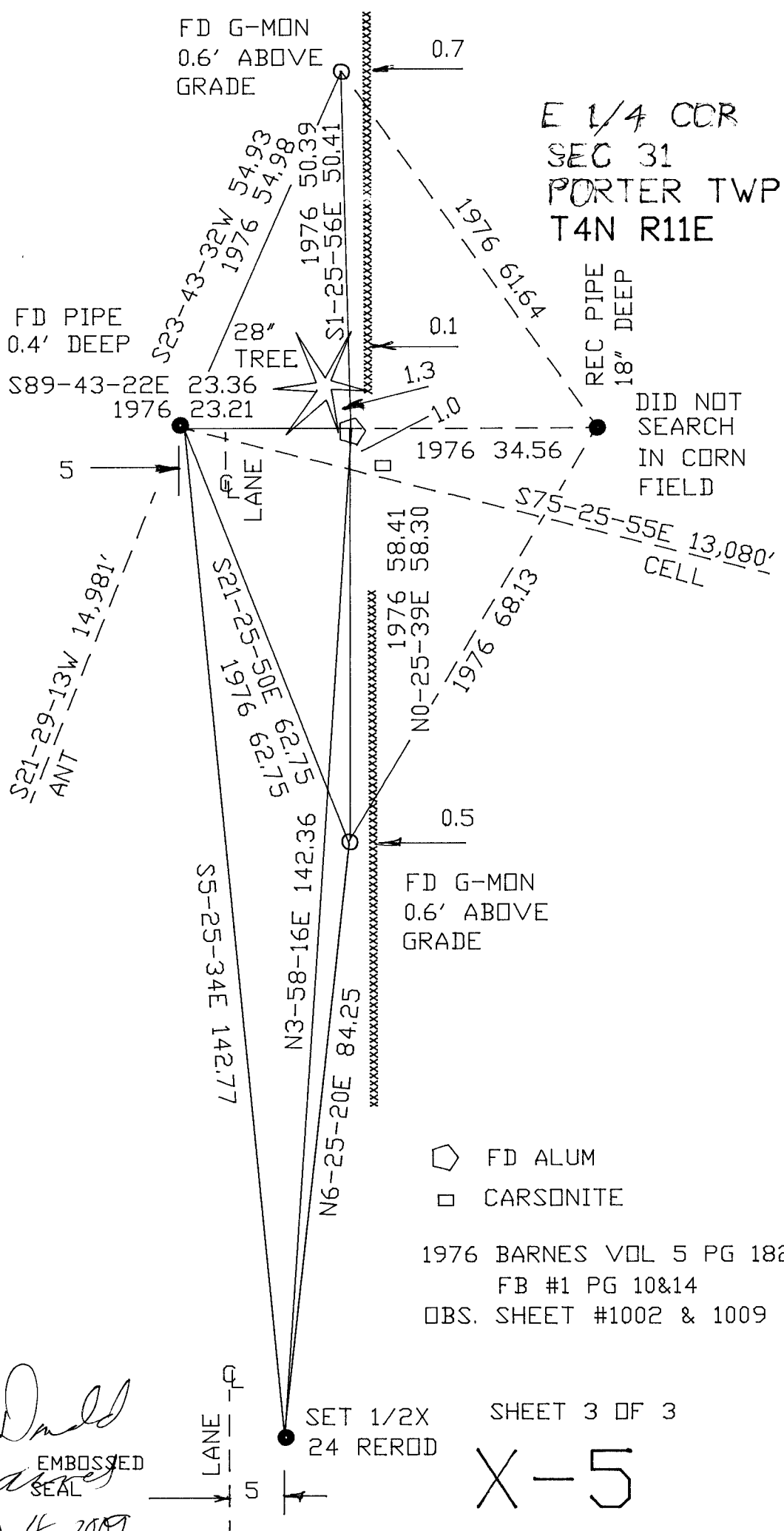
NOV 4 2009

SHEET 2 OF 3

CORNER CODE

X-5

A.E. 7.08 REQUIREMENT



Donald Barnes
EMBOSSED SEAL
NOV 4 2009