

U.S. PUBLIC LAND SURVEY MONUMENT RECORD

For Public Land Survey Corners in:

WI ADMINISTRATIVE CODE A-E 7.08 REQUIREMENT

T. 04N., R. 11 E 4th P.M.

CORNER CODE INDEX

A	1	2	3	4	5	6	7	8	9	10	11	12	13	14	15	16	17	18	19	20	21	22	23	24	25
B	6		5		4		3		2		1														
C	7		8		9		10		11		12														
D	18		17		16		15		14		13														
E	19		20		21		22		23		24														
F	30		29		28		27		26		25														
G	31		32		33		34		35		36														
H																									
I																									
J																									
K																									
L																									
M																									
N																									
O																									
P																									
Q																									
R																									
S																									
T																									
U																									
V																									
W																									
X																									
Y																									
Z																									

Porter TWP
ROCK COUNTY, WI

IF AVAILABLE
ROCK COUNTY COORDINATES PREFERRED

North _____ Elev. _____

East _____

Hor. Datum _____ Vert. Datum _____

LATITUDE _____ ELLIPS. HT. _____

LONGITUDE _____

ELLIPS. DATUM
NAD83(91) _____ COUNTY _____ LIST _____

GPS (X) _____ TRAVERSE (X) _____

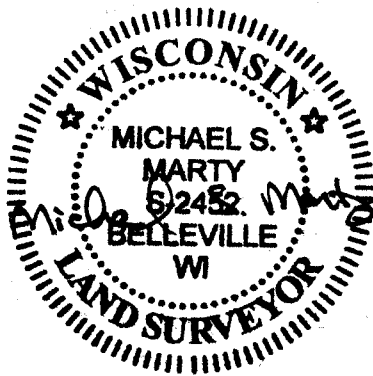
BASED ON THE FOLLOWING CONTROL:

PLACE MONUMENT SYMBOL  AT PROPER LOCATION ON ABOVE INDEX

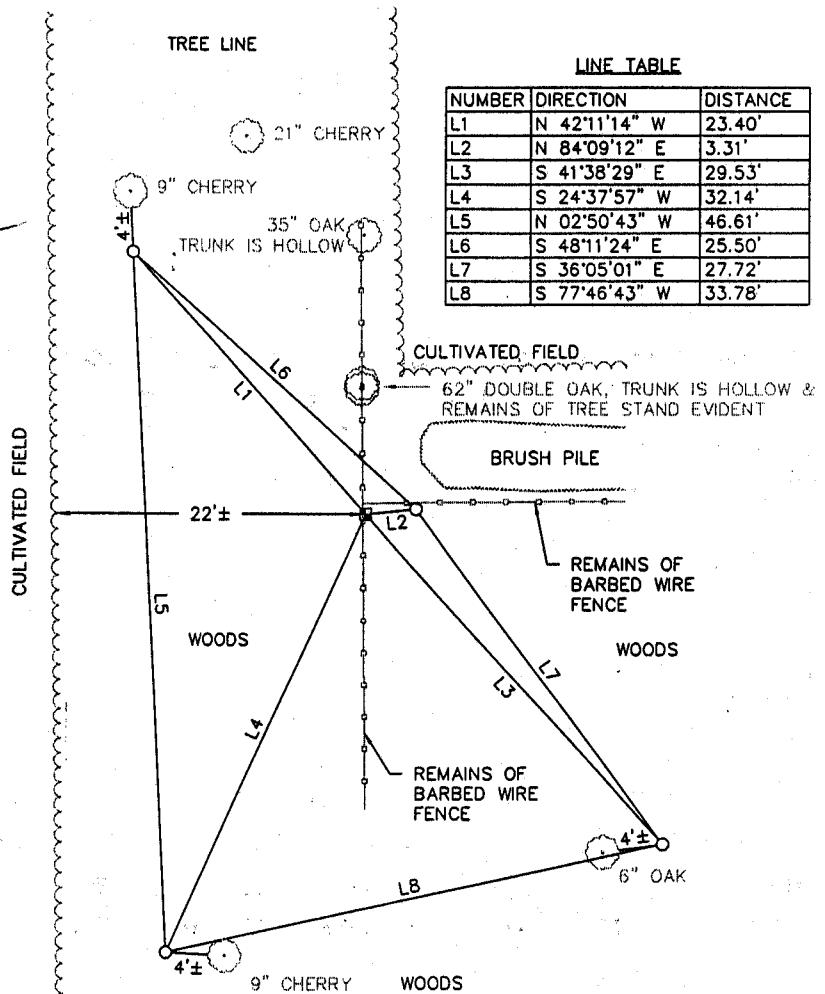
 CORNER MONUMENT

WITNESS MONUMENT

(a)





BEARINGS ARE BASED ON: Assumed



LINE TABLE

NUMBER	DIRECTION	DISTANCE
L1	N 42°11'14" W	23.40'
L2	N 84°09'12" E	3.31'
L3	S 41°38'29" E	29.53'
L4	S 24°37'57" W	32.14'
L5	N 02°50'43" W	46.61'
L6	S 48°11'24" E	25.50'
L7	S 36°05'01" E	27.72'
L8	S 77°46'43" W	33.78'

LEGEND

-  POINTED STONE MONUMENT FOUND, APPROX. 8" X 8" AT BASE. STONE IS GREY/WHITE GRANITE WITH BLACK SPECKLES
-  3/4" DIAMETER SOLID IRON RE-ROD SET

DISTANCES ARE MEASURED TO NEAREST HUNDREDTH OF A FOOT.

Note: Not to scale.

FIELD BOOK _____ PAGE # _____

SHEET 1 OF 1

SHOW A PLAN VIEW DRAWING DEPICTING THE CORNER MONUMENT AND SURROUNDING PHYSICAL FEATURES, INCLUDING THE EXCAVATION AREA AND DEPTH.

PLANNING & ZONING COMMITTEE ADOPTED THE ABOVE FORM ON 12/2/1982

CORNER CODE E-15

B) Describe any record evidence, monument evidence, occupational evidence, testimonial evidence or any other material evidence you considered, and whether the monument was found or placed.

June 11 & 12, 1885 Plat & Record map by Edward Ruger: "Found old stake & stump of SE B.T. & where stump of N.W.B.T. had been dug up Drove stake deep in place of old one put on top of it a pointed H.H. stone 18"x8"x8""

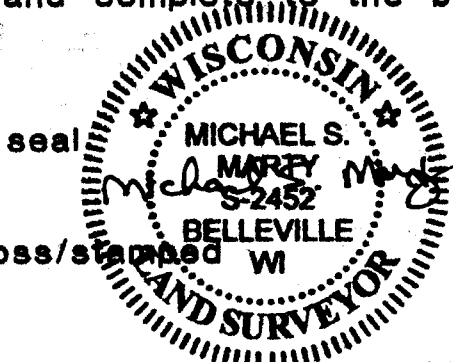
Found pointed stone monument fitting description given, at intersection of N-S fence line with fence line to East, and accepted it as monument marking the N 1/4 corner.

C) Was the corner restored through acceptance of (1) an obliterated evidence location, or, (2) a found perpetuated location?

D) Describe any material discrepancy between the location of the Corner as restored or reestablished and the location of that corner as previously restored or reestablished by distance and direction. Show the discrepancy on the plan view drawing under (a), above. Show the distances between the corner as previously restored or reestablished and (1) the corner as restored or reestablished, and (2) to at least 4 of the witness monuments shown on the drawing in (a), above.

E) Was the corner reestablished through lost corner proportionate methods? If so, show the method, including the directions and distances to other public land survey corners used as evidence or used for proportioning the corner location.

I, Michael S. Marty, hereby certify that the corner location as identified by the corner code index was determined by me under by direction and control and that this U.S. Public Land Survey Monument Record is correct and complete to the best of my knowledge and belief.



Number of included sheets _____