

Paper weight-110# (minimum)

Black nonfading ink required

# U.S. PUBLIC LAND SURVEY MONUMENT RECORD

For Public Land Survey Corners In:  
**T. 4 N. R. 11 E. 4th P.M.**  
CORNER CODE INDEX

WI ADMINISTRATIVE CODE A-E 7.08 REQUIREMENT  
REV 10/23/2004 USMONREC.DWG

**PORTER** TWP  
**ROCK COUNTY WI**

IF AVAILABLE  
ROCK COUNTY COORDINATES PREFERRED

A	1	2	3	4	5	6	7	8	9	10	11	12	13	14	15	16	17	18	19	20	21	22	23	24	25	A
B		6				5				4					3					2					1	B
C																										C
D																										D
E																										E
F																										F
G																										G
H																										H
J																										J
K																										K
L																										L
M																										M
N																										N
O																										O
P																										P
Q																										Q
R																										R
S																										S
T																										T
U																										U
V																										V
W																										W
X																										X
Y																										Y
Z																										Z

North \_\_\_\_\_ Elev. \_\_\_\_\_

East \_\_\_\_\_

Hor. Datum \_\_\_\_\_ Vert. Datum \_\_\_\_\_

LATITUDE \_\_\_\_\_ ELLIPS. HT. \_\_\_\_\_

LONGITUDE \_\_\_\_\_

NAD83(91) \_\_\_\_\_ NETWORK ADJ. YR \_\_\_\_\_

GPS (X) \_\_\_\_\_ TRAVERSE (X) \_\_\_\_\_

BASED ON THE FOLLOWING CONTROL:  
\_\_\_\_\_

PLACE MONUMENT SYMBOL **◆** AT PROPER LOCATION ON ABOVE INDEX

**◆** CORNER MONUMENT

**○** WITNESS MONUMENT

BEARINGS ARE BASED ON: \_\_\_\_\_

FIELD BOOK \_\_\_\_\_ PAGE # \_\_\_\_\_

SHEET 1 OF 3

SHOW A PLAN VIEW DRAWING DEPICTING THE CORNER MONUMENT AND SURROUNDING PHYSICAL FEATURES, INCLUDING THE EXCAVATION AREA AND DEPTH.

PLANNING & ZONING COMMITTEE ADOPTED THIS FORM ON 12/2/1982

CORNER CODE V-5

PO 603 NE COR SEC 31

(B) Describe any record evidence, monument evidence, occupational evidence, testimonial evidence or any other material evidence you considered, and whether the monument was found or placed.

- 1833 HARRISON (NOV) T4N R11E 4<sup>TH</sup> MER. NORTH  
BET. &
- 1833 HARRISON (NOV) T4N R11E 4<sup>TH</sup> MER. NORTH  
BET. 31 & 32  
1524.6 BURR OAK 12 IN DIAM.  
2381.28 TRAIL N.E.  
2640.0 QUARTER SEC COR  
{BURR OAK 10 N88E 29.70' ; BURR OAK 20  
N65E 85.80' {BURR OAK 10 ; BURR OAK  
20} MARKED  
4072.86 BURR OAK 12 IN DIAM  
5280.0 SET POST FOR COR TO SEC 29,30,31,32  
{BURR OAK 12 S8W 52.14'; BURR OAK 12  
N68E 38.28'; BURR OAK 10 N42W 93.06';  
BURR OAK 14 S44E 123.42'  
LAND ROLLING 2<sup>ND</sup> RATE WITH RED & BURR  
OAK TIMBER
- 1833 HARRISON (NOV) T4N R11E 4<sup>TH</sup> MER. EAST ON  
RANDOM BET. 29 & 32  
2640.0 TEMPY 1/4 SEC COR.  
5289.90 INT E BDY 23.10' NORTH OF POST LAND @  
SAME  
WEST COR WEST BET. 29 & 32  
2644.95 QUARTER SEC COR. {BURR OAK 14 S5E  
50.16'; BURR OAK 14 S62E 9.24'} {BURR  
OAK 14; BURR OAK 14} MARKED  
5289.90 SEC COR
- 1833 (NOV) HARRISON T4N R11E 4<sup>TH</sup> MER. WEST BET. SECS 30 &  
31  
2640.00 SET POST FOR COR TO 1/4 SEC {W.O. 12 S40W  
52.8'; BURR OAK 18 S41W 50.16' {BURR OAK  
18; WHITE OAK 12} MARKED  
5214.0 INT. WEST BDY 16.5' ? 1650' N OF POST  
{BURR OAK 24 S54E 52.80'; BURR OAK 18 N70E  
19.8' LAND ROLLING 2<sup>ND</sup> RATE ??????  
TIMBERED WITH RED & BURR OAK.
- 1833 HARRISON (NOV 3RD) T4N R11E 4<sup>TH</sup> MER. NORTH  
BET. 29 & 30  
1935.12 RED OAK 24 IN DIAM.  
2640.0 QUARTER SEC COR.  
BURR OAK 12 N11E 16.5'  
BURR OAK 10 S60E 21.12'  
{BURR OAK 12; BURR OAK 10} MARKED  
3911.82 BURR OAK 18 IN DIAM.  
5280.0 SET COR TO SECS 19,20,29,30  
{WHITE OAK 10 S75W 17.82'; WHITE OAK  
24 S41E 67.32'; BURR OAK 10 N75E  
43.56'; BURR OAK 15 N52W 112.20'  
LAND ROLLING 2<sup>ND</sup> RATE TIMBER MOSTLY  
RED, BURR OAK. ????????
- 1871 RUGER VOL 2 PG 68 FD REMAINS OF OLD STAKE ALSO FD  
STUMPS OF NW, NE, & SE B.T.S DROVE STAKE &  
SURROUNDED IT WITH 4 HH STONES.
- 1874 RUGER VOL 2 PG 165 & #3652 COR EST BY SELF SEC 31  
RECORD OF SEC 29 PORTER VAR 7-15 2667.06 TO HH  
15X10X8 @ W 1/4 COR SEC 32, VAR 7-55 2661.12 TO N 1/4  
COR SEC 31, W 1/4 COR SEC 32 IS ON LINE & MIDWAY  
BETWEEN NW & SW CORNERS OF SEC 32.
- 1874 RUGER VOL 2 PG 179 FD COR EST. BY SELF SEE PAGE 41  
SHEET 1 OF 3  
CORNER CODE V-5

Donald Barnes  
Nov 4 2009

PO603                      NECORSEC31

PO603                      NECORSEC31

- 1976    BARNES VOL 5 PG 177 FD 4 HH 2657.86 TO S 1/4 COR SEC 30 & 2665.46 TO RESET PK FROM TIES @ E 1/4 COR SEC 30
- 1976    BARNES VOL 5 PG 179 FD 4 HH REPLACED WITH BERNTSEN W-1-B MON.[ALUM] & REFERENCED SAME. MON IS 3' EAST OF N/S FENCE & ON LINE WITH E/W FENCE
- 1978    LEE CSM VOL 8 PG 28 ALUM. MON. 2665.02 TO ALUM @ W 1/4 COR SEC 29
- 1979    BARNES VOL 5 PG 567 (LEE) 2665.02 TO W 1/4 COR SEC 29 & ANGLE 90-07-29 @ W 1/4 COR SEC 29 FROM CEN SEC 29 TO SW COR SEC 29
- 1993    KARNS CSM VOL 17 PG 123 ROCK COUNTY MON.
- 1994    SCHROEDER #9676&9675 STATES NOTHING ABOUT MON. S89-37W 2658.02 TO S 1/4 COR SEC 30; N88-52E 406.45 ON SOUTH LINE OF SEC 29
- 1994    KARNS CSM VOL 17 PG 168 ALUM. SOUTHERLY 2154.29 TO FD IRON @ NORTH R/W LINE OF RD.

I USED MY 1976 OBSERVATIONS.

C) Was the corner restored through acceptance of (1) an obliterated evidence location, or, (2) a found perpetuated location?

ACCEPTED ALUM. MON.

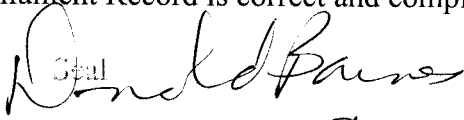
D) Describe any material discrepancy between the location of the corner as restored or reestablished and the location of that corner as previously restored or reestablished by distance and direction. Show the discrepancy on the plan view drawing under (a), above. Show the distances between the corner as previously restored or reestablished and (1) the corner as restored or reestablished, and (2) to at least 4 of the witness monuments shown on the drawing in (a), above.

NONE

(E) Was the corner reestablished through lost corner proportionate methods? If so, show the method, including the directions and distances to other public land survey corners used as evidence or used for proportioning the corner location.

NO

I, **Donald Barnes**, hereby certify that the corner location as identified by the corner code index was determined by me under my direction and control and that this U.S. Public Land Survey Monument Record is correct and complete to the best of my knowledge and belief.

  
NOV 4 2009  
Emboss

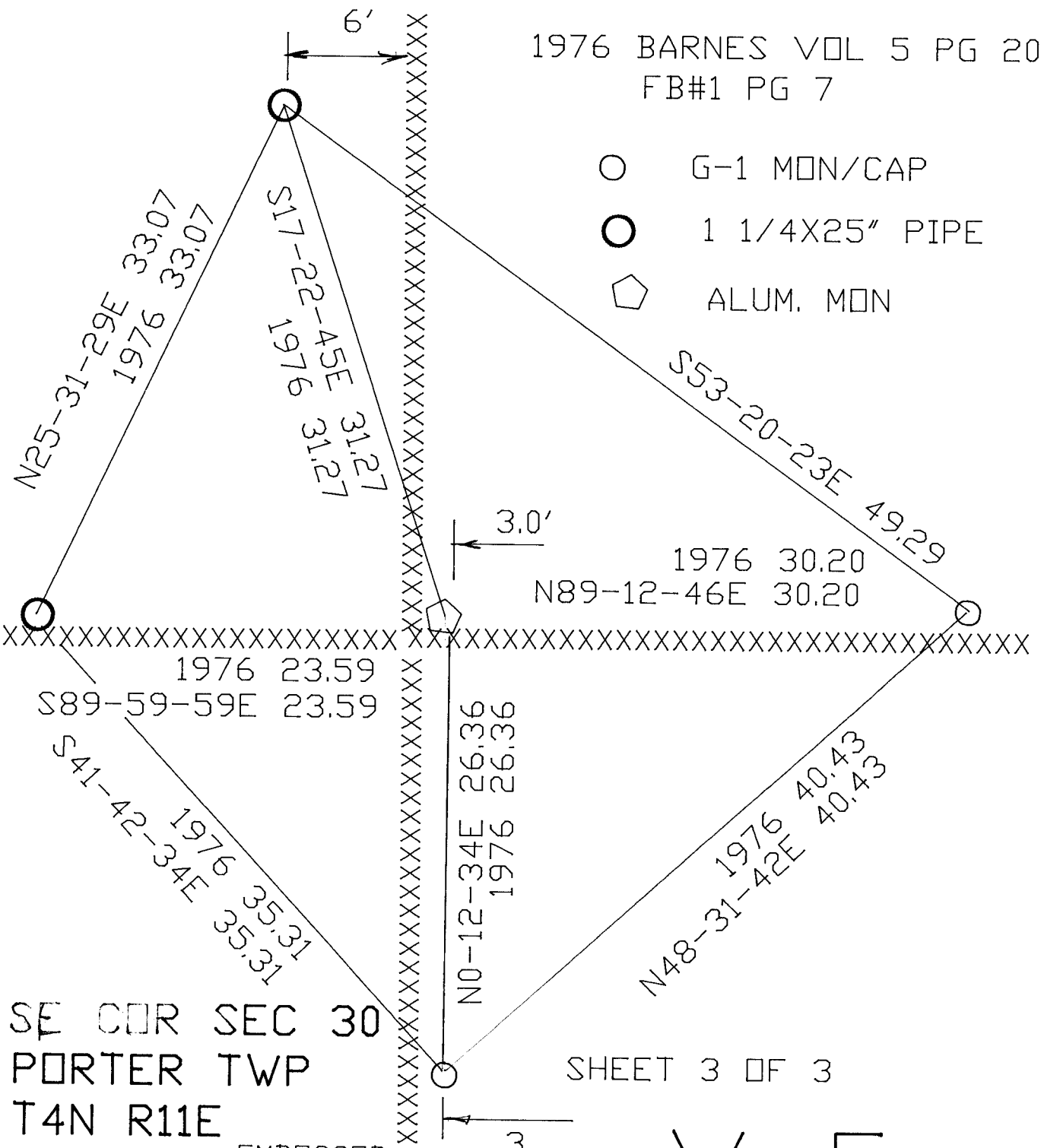
SHEET 2 OF 3

CORNER CODE **V-5**

A.E. 7.08 REQUIREMENT

1976 BARNES VOL 5 PG 201  
FB#1 PG 7

- G-1 MON/CAP
- 1 1/4X25" PIPE
- ◻ ALUM. MON



SE COR SEC 30  
PORTER TWP  
T4N R11E

SHEET 3 OF 3

EMBOSSSED SEAL

*Donald Barnes*  
Nov 4 2009

V-5