

U.S. PUBLIC LAND SURVEY MONUMENT RECORD

For Public Land Survey Corners in the

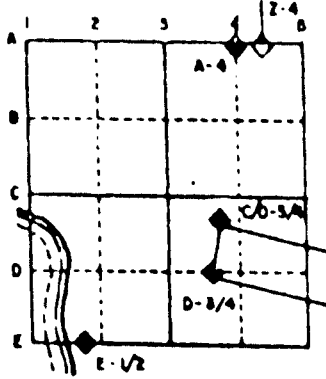
T. 3 N., R. 10 E.

CORNER CODE INDEX

	1	2	3	4	5	6	7	8	9	10	11	12	13	14	15	16	17	18	19	20	21	22	23	24	25
A																									
B																									
C																									
D																									
E																									
F																									
G																									
H																									
I																									
J																									
K																									
L																									
M																									
N																									
O																									
P																									
Q																									
R																									
S																									
T																									
U																									
V																									
W																									
X																									
Y																									
Z																									

PLACE MONUMENT SYMBOL (◆) AT PROPER LOCATION ON ABOVE INDEX

EXAMPLE



MAGNOLIA TWP  
ROCK COUNTY WI

IF AVAILABLE  
STATE PLANE COORDINATES

North (Y) \_\_\_\_\_ Elev. (Z) \_\_\_\_\_  
 East (X) \_\_\_\_\_ Zone \_\_\_\_\_  
 Hor. Datum \_\_\_\_\_ Vert. Datum \_\_\_\_\_

◆ CORNER MONUMENT

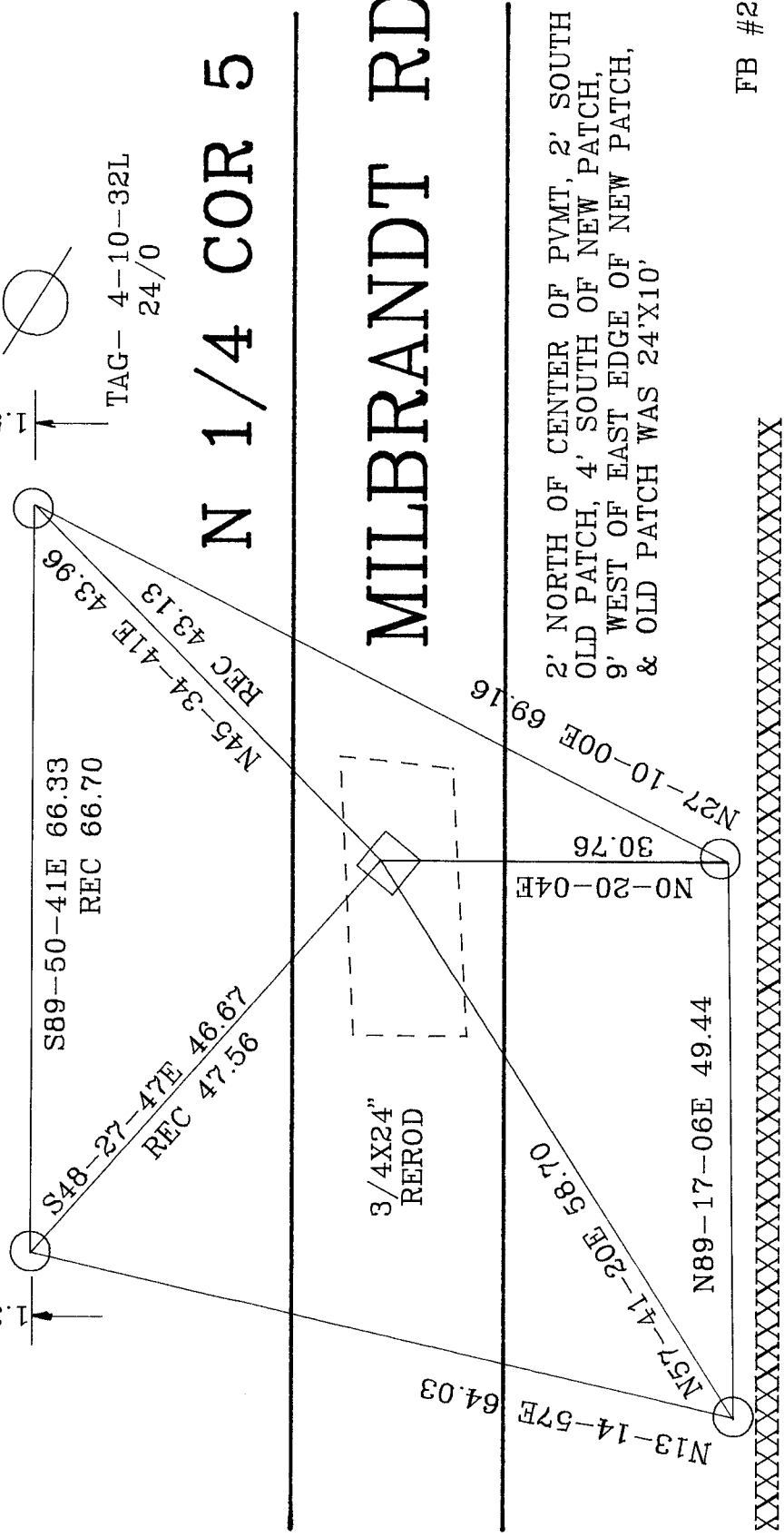
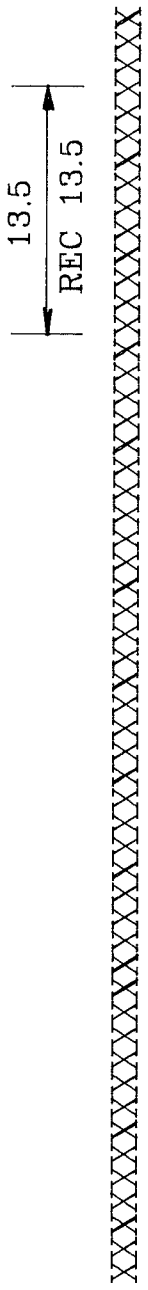
○ WITNESS MONUMENT

BEARINGS ARE BASED ON:

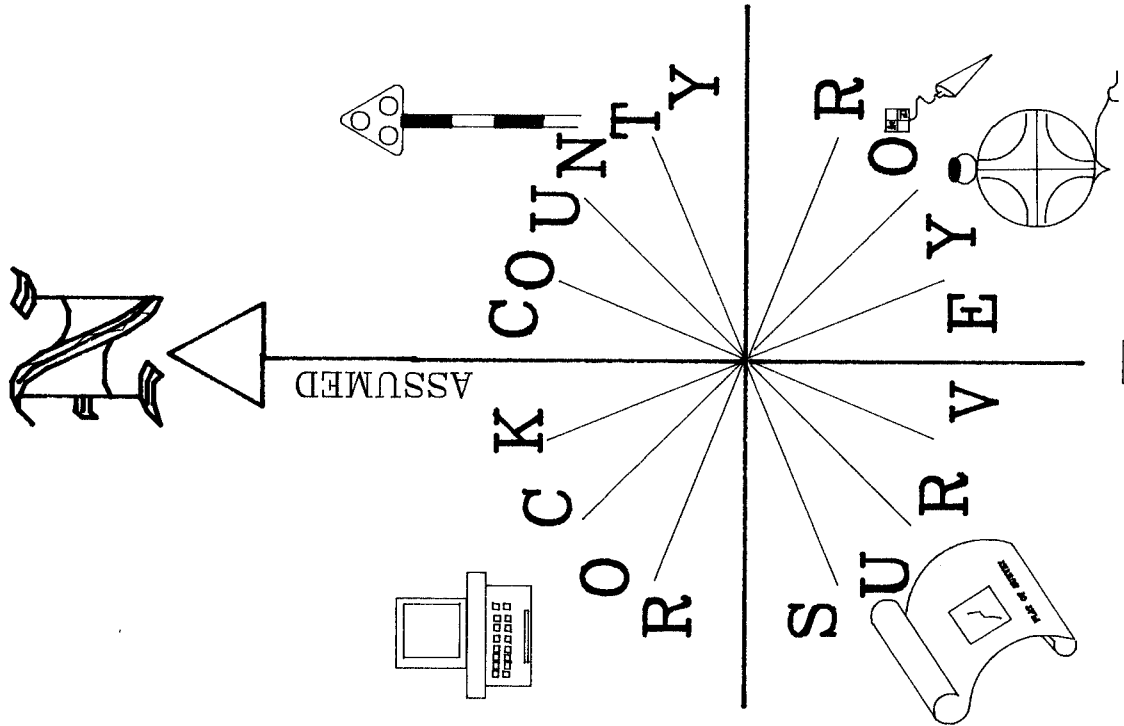
*Donald Barnes*  
June 23, 1994

1 OF 3

A7



2' NORTH OF CENTER OF PVMT, 2' SOUTH OF  
 OLD PATCH, 4' SOUTH OF NEW PATCH,  
 9' WEST OF EAST EDGE OF NEW PATCH,  
 & OLD PATCH WAS 24'X10'



FB #2 UNION TWP PG 57,59

○ 3/4X24" REROD WITH YELLOW CAP

(B) Describe any record evidence, monument evidence, occupational evidence, testimonial evidence or any other material evidence you considered, and whether the monument was found or placed.

1863 LOCKE VOL 1 PG 183 SET HARDHEAD 20X18X10 & SMALL LIMESTONE ON N,S,E, & WEST. FOUND STONE SET AT THE S1/4 CORNER OF SECTION 32 UNION TWP. USED TO SUBDIVIDE SECTION 5. SET A HARDHEAD 20X9X8 1090.32' EAST OF THE N 1/4 CORNER OF SECTION 5. THIS STONE WAS FOUND & REFERENCED BY BATTERMAN JR. VAR INDICATES A BEND AT THE N 1/4 CORNER OF SECTION 5. HE SET THE CORNER MIDWAY BETWEEN THE NW AND NE CORNERS OF SECTION 5. ALSO CALLS FOR 2214.96' TO THE CENTER OF SECTION 5.

1890 BLEEDORN VOL 2 PG 439 FOUND CORNER SET BY LOCKE. USED TO SUBDIVIDE NW 1/4 OF SECTION 5. SET SEVERAL POINTS ALONG THE NORTH LINE OF THE NW 1/4 OF SECTION 5.

1968 BATTERMAN JR. VOL 4 PG 364 DUG AND FOUND STONE 26X18X10 POINT UP 8" DEEP.

COULD NOT FIND REFERENCE PIPES. FOUND OLD PATCH AND LIMITS OF OLD EXCAVATION WAS CLEARLY DELINEATED. DUG 3' DEEP AND FOUND NOTHING. SET 3/4X24" REROD.

C) Was the corner restored through acceptance of (1) an obliterated evidence location, or, (2) a found perpetuated location?

THE CORNER WAS RESTORED THROUGH ACCEPTANCE OF AN OBLITERATED EVIDENCE LOCATION. MAINTAINED EQUAL DISTANCE BETWEEN THE NE & NW CORNERS OF SECTION 5. ALSO MAINTAINED HARMONY WITH THE E/W FENCE LINE AND THE P.P AS SHOWN IN VOL 4 PG 364.

D) Describe any material discrepancy between the location of the corner as restored or reestablished and the location of that corner as previously restored or reestablished by distance and direction. Show the discrepancy on the plan view drawing under (a), above. Show the distances between the corner as previously restored or reestablished and (1) the corner as restored or reestablished, and (2) to at least 4 of the witness monuments shown on the drawing in (a), above.

(E) Was the corner reestablished through lost corner proportionate methods? If so, show the method, including the directions and distances to other public land survey corners used as evidence or used for proportioning the corner location.

NO

I, Donald Barnes, hereby certify that the corner points as identified by the corner code index were, in a field survey on, June 24, 1994 established, re-established, monumented, re-monumented, recovered or restored as expressed below and in conformance with the regulations and rules as required in the current manual of survey instructions of the United States Department of Interior, Bureau of Land Management.

seal  
*Donald Barnes*  
June 23, 1994

COUNTY SURVEYOR FILING DATA

Date of computer entry \_\_\_\_\_

Date microfilmed \_\_\_\_\_

Number of included sheets 3  
CORNER CODE

AFFIX YOUR LAND SURVEYOR SEAL

A 7

