

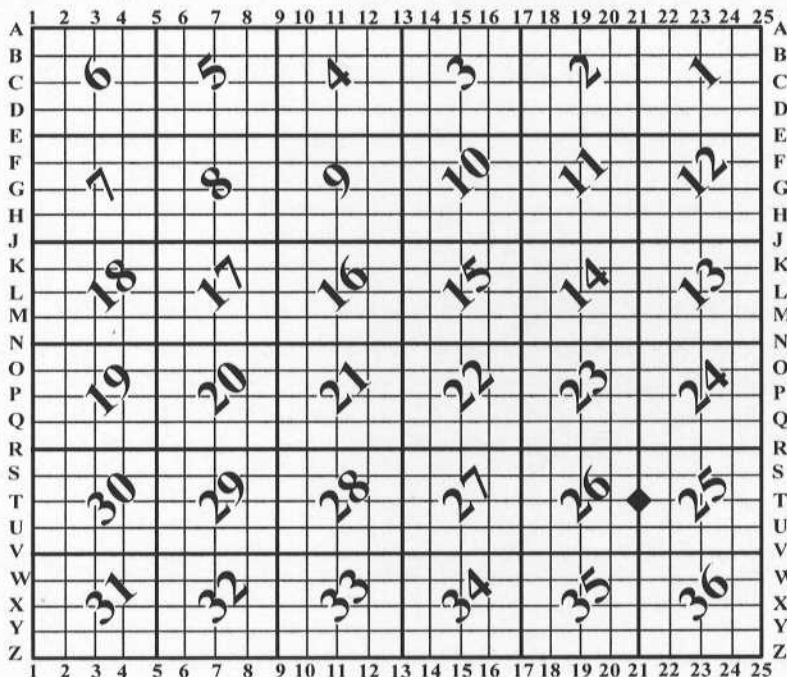
U.S. PUBLIC LAND SURVEY MONUMENT RECORD

For Public Land Survey Corners In: WI ADMINISTRATIVE CODE A-E 7.08 REQUIREMENT

T. 2 N. - R. 14 E. of the 4th P.M.

CORNER CODE INDEX

(PLACE "◆" SYMBOL AT PROPER PLSS CORNER LOCATION)



BRADFORD TWP
ROCK COUNTY WI

COORDINATES

(GNSS DERIVED VIA WISCORS)

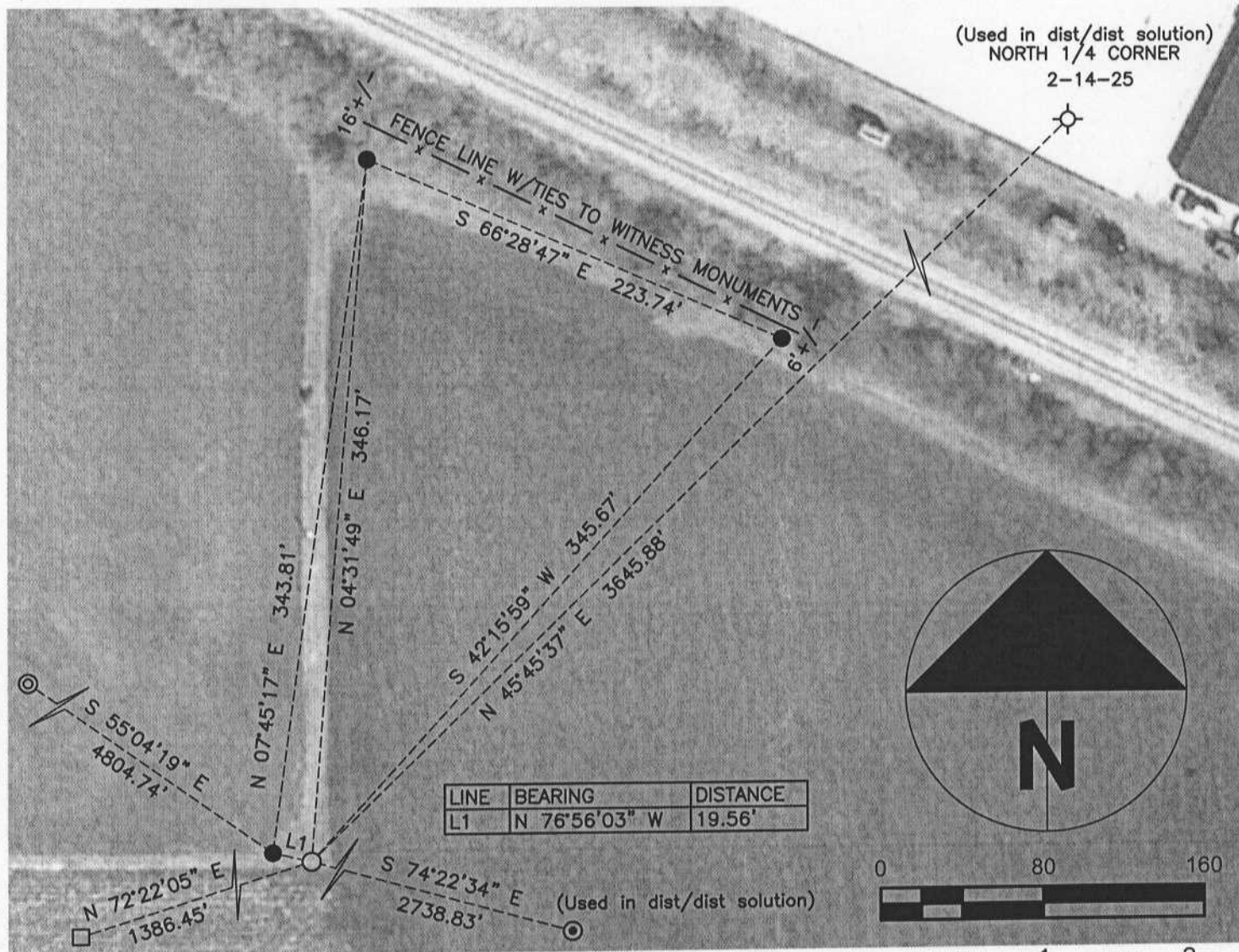
NORTHING: 239909.26 ELEV: N/A
EASTING: 554457.39

Hor. Datum: WCCS-ROCK, (NA2011)

Vertical Datum: NAVD 88, (If applicable)

(a) LEGEND

- - 3/4" x 24" REBAR SET, (RED CAP WITH "PLSS WITNESS / S-2331")
- - ALUMINUM MONUMENT SET, (WEST 1/4 CORNER, 2-14-25)
- ⊙ - NAIL/FLASHER FOUND; PREVIOUS CTY. SURVEYOR TRAVERSE
- ⊗ - IRON PIPE FOUND; PREVIOUS CTY. SURVEYOR TRAVERSE
- - WISCONSIN DOT HMP MONUMENT FOUND, (BRADFORD S GPS)
- ⊕ - ALUMINUM MONUMENT FOUND



B) Describe any record evidence, monument evidence, occupational evidence, testimonial evidence or any other material evidence you considered, and whether the monument was found or placed.

The most recent tie-sheet for this corner indicates a pipe set, over a deeper pipe, in Vol. 6, Pg. 221 of survey records, (1981). Gas line structures indicate that a pipeline was installed subsequent to 1981; analysis of aerial photos suggests that sometime between 2000 & 2008 the line was installed. This is based on trees north of the corner being eliminated and changes in the limits of farming activity. Extensive and independent digging was done by R.H. Batterman & Co., Inc., (RHB), and I for the pipes referenced; both are gone.

A 1984 filed survey, (M14099), shows section corners in the ¼ section and pipes set along the lines of the same. However, notes on the map reference some corners being found/surveyed and others not; those that were not found are based on coordinates provided by the County Surveyor at the time. Also, the map contains coordinates for traverse points/section corners that are assumed to be the basis for translation/rotation to County data. The information on the M14099 map does not give me the confidence to base the W1/4 corner location on the monuments shown on the same.

Absent a monument at the corner and nearby witnesses that can be relied upon, I surveyed other traverse nails used by the County surveyor in the 1980's. Two traverse points, (nail & pipe), were surveyed/accepted along with the N1/4 corner of section 25. The geometry between those three points works out to discrepancies near 0.05'. Using the distance/distance method, I computed the position of the W1/4 from a traverse nail southeast of the W1/4 and the N1/4 of the section. I believe this gives the most reliable solution for the former location of the W1/4 of Section 25.

C) Was the corner restored through acceptance of (1) an obliterated evidence location, or, (2) a found perpetuated location?

The corner was restored through an obliterated evidence location.

D) Describe any material discrepancy between the location of the corner as restored or reestablished and the location of that corner as previously restored or reestablished by distance and direction. Show the discrepancy on the plan view drawing under (a), above. Show the distances between the corner as previously restored or reestablished and (1) the corner as restored or reestablished, and (2) to at least 4 of the witness monuments shown on the drawing in (a), above.

The distance to the N1/4 is explained in B above. To prevent map clutter, the W1/4 to the NW corner distance is not shown but, differs from existing County coordinates by 0.29 feet. The county coordinate distance is not in harmony with past County data available; the "old" data is in harmony with today's survey results and this tie-sheet.

I did not survey the NW corner of the section and based on County coordinates, the distance is 2640.39 feet from the W1/4 to the NW corner; that differs from my computed distance of 2640.68 feet. My computed distance incorporates coordinates for the NW corner provided by RHB, which I am confident in as our coordinate values match at other control points in the project area. My 2640.68 distance is in harmony with the previously mentioned "old" tie-sheet found in Volume 6, Page 219; the "old" distance, (referred to on M14099 as well), is 2640.69 feet.

Other traverse points south of the project area contain discrepancies when compared to those accepted. It is believed that post 1981 least squares adjustments to land traverse data caused the distance differences found when comparing former and current section line distances. The same may be true for discrepancies in the other traverse points found. No attempt will be made to reanalyze/readjust former land traverse work. The monuments & reliable witnesses/former traverse points provide the basis for corner acceptance and/or re-establishment; not coordinate values.

(E) Was the corner reestablished through lost corner proportionate methods? If so, show the method, including the directions and distances to other public land survey corners used as evidence or used for proportioning the corner location.

N/A

I, **Jason R. Houle**, hereby certify that the corner location as identified by the corner code index was determined by me under my direction and control and that this U.S. Public Land Survey Monument Record is correct and complete to the best of my knowledge and belief.

CORNER CODE: T-21
(A.E. 7.08 REQUIREMENT)
Page 2 of 2

