

Paper weight-110# (minimum)

Black nonfading ink required

# U.S. PUBLIC LAND SURVEY MONUMENT RECORD

For Public Land Survey Corners In:  
T. 2N. R. 14E. 4th P.M.

WI ADMINISTRATIVE CODE A-E 7.08 REQUIREMENT  
REV 10/23/2004 USMONREC.DWG

### CORNER CODE INDEX

1	2	3	4	5	6	7	8	9	10	11	12	13	14	15	16	17	18	19	20	21	22	23	24	25	
A																									A
B																									B
C	6																								C
D																									D
E																									E
F																									F
G	7																								G
H																									H
J																									J
K																									K
L	18																								L
M																									M
N																									N
O																									O
P	19																								P
Q																									Q
R																									R
S																									S
T																									T
U	30																								U
V																									V
W																									W
X																									X
Y	31																								Y
Z																									Z
	1	2	3	4	5	6	7	8	9	10	11	12	13	14	15	16	17	18	19	20	21	22	23	24	25

PLACE MONUMENT SYMBOL  AT PROPER LOCATION ON ABOVE INDEX

BRADFORD TWP  
ROCK COUNTY WI

IF AVAILABLE  
ROCK COUNTY COORDINATES PREFERRED

North \_\_\_\_\_ Elev. \_\_\_\_\_

East \_\_\_\_\_

Hor. Datum \_\_\_\_\_ Vert. Datum \_\_\_\_\_

LATITUDE \_\_\_\_\_ ELLIPS. HT. \_\_\_\_\_

LONGITUDE \_\_\_\_\_

NAD83(91) \_\_\_\_\_ NETWORK ADJ. YR \_\_\_\_\_

GPS (X) \_\_\_\_\_ TRAVERSE (X) \_\_\_\_\_

BASED ON THE FOLLOWING CONTROL:

CORNER MONUMENT

WITNESS MONUMENT

BEARINGS ARE BASED ON: \_\_\_\_\_

FIELD BOOK \_\_\_\_\_ PAGE # \_\_\_\_\_

SHEET 1 OF 4

SHOW A PLAN VIEW DRAWING DEPICTING THE CORNER MONUMENT AND SURROUNDING PHYSICAL FEATURES, INCLUDING THE EXCAVATION AREA AND DEPTH.

PLANNING & ZONING COMMITTEE ADOPTED THIS FORM ON 12/2/1982

CORNER CODE R-15

**BR588 N1/4CORSEC27**

*(B) Describe any record evidence, monument evidence, occupational evidence, testimonial evidence or any other material evidence you considered, and whether the monument was found or placed.*

- 1836 LYON EAST RANDOM BETWEEN SECTIONS 22 & 27  
2508 BROOK 19.8' WIDE CRS SW  
5280 INTERSECTED N & S LINE 100.98' SOUTH OF  
POST. LAND ROLLING, FIRST HALF IS FIRST RATE,  
LAST HALF IS 2ND RATE. TIMBER- WHITE BLACK &  
BUR OAK. UNDER GROWTH GRASS.  
WEST CORRECTED BETWEEN SECTIONS 22 &  
27  
2643.30 SET QUARTER SECTION POST {WHITE OAK 20  
N44W 10.56', WHITE OAK 18 N59E 25.08'  
5286.66 SECTION CORNER
- 1873 RUGER VOL 2 PG 120 FD OLD STAKE & STUMPS OF BTS.  
DROVE LARGE NEW STAKE IN PLACE OF OLD ONE &  
SURROUNDED IT WITH 5 LIMESTONES. VAR 5-35 TO NE  
COR SEC 27
- 1880 LEE VOL 2 PG 316 FOUND OLD STAKE SURROUNDED BY 5  
LIMESTONES AND STUMPS OF BTS. SHOWS ON EAST SIDE  
OF CREEK. FROM CENTER OF CREEK 2593.8 TO NW COR SEC  
27
- 1894 BROWN VOL 2 PG 503 FD RUGER'S COR. 2640.31 TO  
CENTER OF SEC 22. VAR 3-33 TO SW COR SEC 22
- 1951 SUNNY #6148 PARK SURVEY STATES NOTHING ABOUT  
MON. CALLS FOR CENTER OF CREEK AS WESTERLY 374  
FROM PROPERTY COR TO CENTER OF CREEK. SHOWS &  
DOES NOT CALL FOR 1/4 COR.
- 1957 BATTERMAN VOL 3 PG 531 2" PIPE 2650.89 TO FD HH @ NW  
COR SEC 27
- 1981 BARNES VOL 6 PG 145 FD CONG. MON WITH BRASS CAP 1  
1/2' ABOVE GROUND.
- 1981 BARNES VOL 6 PG 212 FD CONG. MON WITH BRASS CAP 0.3'  
ABOVE GROUND. 2.5' NORTH OF NORTH EDGE OF CONG.  
PAD, & 0.5' EAST OF NW CORNER OF CONG. PAD. CONG.  
PAD HAS PARK BENCE. EASTERLY 294.18 TO FD CONG.  
MON. 0.15 ABOVE GROUND & LEANING TO THE NORTH @  
E/W FENCE & FENCE GOING SOUTH. SHOWS EAST OF  
CREEK.
- 1982 BARNES TWP PROJ S88-12-03E 2649.85 TO NE COR SEC 27  
& N88-39-25W 2656.21 TO NW COR SEC 27.
- 1989 COMBS CSM VOL 14 PG 104 FD CONG. MON. 2656.21 TO  
ALUM. MON @ NW COR SEC 27. WESTERLY 371.26 TO FD  
PIN @ INTERSECTION OF RD.
- 2002 COMBS #14525 FD CONG. MON. NO-12-15W 2638.83 TO  
CENTER OF SEC 22 & NO-12-15W 5300.71 TO FD PK @ N 1/4  
COR SEC 22. @ FD ALUM MON @ W 1/4 COR SEC 22 S87-  
52-04E 2656.46 TO CENTER OF SEC 22 & S87-52-04E  
5301.29 TO FD ALUM @ E 1/4 COR SEC 22.
- 2002 COMBS #14504 FD CONG. NO-12-15W 5300.71 TO N 1/4  
COR SEC 22,
- 2003 COMBS CSM VOL 26 PG 78 FD CONG. MON. 2656.21 TO  
ALUM. MON @ NW COR SEC 27.

FD CONG. MON. WITH TOP BROKE OFF AT A SLANT. TOP IS 0.4'  
ABOVE GRADE. TOWNSHIP OFFICIAL CALLED AND STATED THE  
MONUMENT WILL BE DESTROYED BY CONSTRUCTION.

SHEET 1 OF 24  
CORNER CODE R-15

*Daniel Barnes*

*APRIL 15, 2010*

C) Was the corner restored through acceptance of (1) an obliterated evidence location, or, (2) a found perpetuated location?

**ACCEPTED CONG. MON.**

D) Describe any material discrepancy between the location of the corner as restored or reestablished and the location of that corner as previously restored or reestablished by distance and direction. Show the discrepancy on the plan view drawing under (a), above. Show the distances between the corner as previously restored or reestablished and (1) the corner as restored or reestablished, and (2) to at least 4 of the witness monuments shown on the drawing in (a), above.

**THERE IS A DISCREPANCY WITH DISTANCES TO THE SW COR SEC 22. COMBS & I HAD 2656.21 & IN 1957 BATTERMAN HAD 2650.89. THERE IS NO RECORD OF THE CONG. MON. BEING SET.**

(E) Was the corner reestablished through lost corner proportionate methods? If so, show the method, including the directions and distances to other public land survey corners used as evidence or used for proportioning the corner location.

I, **Donald Barnes**, hereby certify that the corner location as identified by the corner code index was determined by me under my direction and control and that this U.S. Public Land Survey Monument Record is correct and complete to the best of my knowledge and belief.

*Donald Barnes*  
Seal  
Emboss

SHEET 2 OF 4

*April 15, 2010*

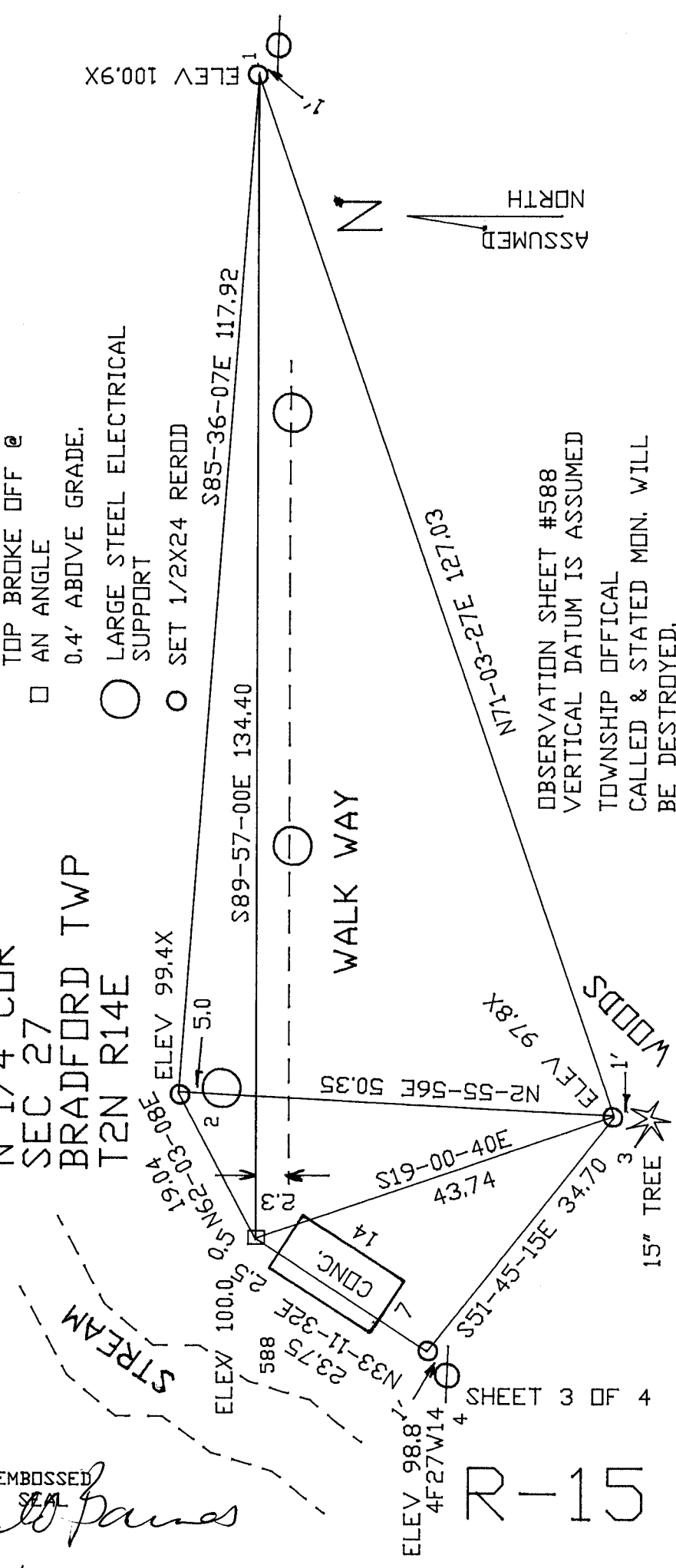
CORNER CODE **R-15**

**A.E. 7.08 REQUIREMENT**

N 1/4 COR  
 SEC 27  
 BRADFORD TWP  
 T2N R14E

- FD CONG. MON. WITH TOP BROKE OFF @ AN ANGLE
- LARGE STEEL ELECTRICAL SUPPORT
- SET 1/2X24 REROD

OBSERVATION SHEET #588  
 VERTICAL DATUM IS ASSUMED  
 TOWNSHIP OFFICIAL CALLED & STATED MON. WILL BE DESTROYED.



EMBOSSED  
*Donald James*  
 APRIL 15, 2010

ELEV 98.8  
 4F27W14  
 SHEET 3 OF 4  
 R-15

W 1/4 COR  
 SEC 22  
 2010 ADJ S88-34-43E 5301.29  
 2002 COMBS S87-52-00E 5301.13  
 INT. S88-34-43E 2656.46  
 2002 COMBS #14525 N87-59-20E 2656.25

N 1/4 COR SEC 22  
 NO-47-31W 2662.19  
 NO-12-15W 2661.88  
 2002 COMBS #14525  
 1880 BLEEDORN  
 HH 12X10X8 POINT UP  
 1894 BLEEDORN 2-503 VAR 4-06  
 2010 ADJ S88-34-43E 2644.83  
 2002 COMBS #14525 N87-59-20E 2644.88

E 1/4 COR  
 SEC 22  
 2002 COMBS 92-12-48  
 2002 COMBS 92-12-53  
 1894 BLEEDORN 2-503 2640.31  
 2002 COMBS NO-12-15W 2638.83  
 2010 ADJ NO-47-31W 2662.19  
 2002 COMBS NO-12-15W 5300.71  
 2002 COMBS #14504 S0-12-15E 5300.71  
 NO-47-31W 5300.97  
 SEC 22  
 BRADFORD TWP  
 T2N R14E  
 S 1/4 COR SEC 22  
 SE COR  
 SEC 22  
 1880 LEE 2-316 TO CEN CREEK 2593.8  
 1894 BLEEDORN VOL2-503 VAR 3-33  
 1957 BATTERMAN VOL3-531 2650.89  
 1982 BARNES TWP PROJ. N88-39-25W 2656.21  
 1989 COMBS CSM14-104 2656.21  
 2003 COMBS CSM26-78 2656.21  
 2010 ADJ. S88-48-03E 2656.23  
 SW COR  
 SEC 22  
 91-10-53  
 CEN. CREEK  
 2010 ADJ. S0-01-04W 5296.95  
 1882 BARNES TWP PROJ S88-12-03E 2649.85  
 2010 ADJ S88-20-52E 2649.70  
 1981 BARNES CONC-CONC 294.18  
 1951 SUNNY 374 TO CEN CREEK  
 SEC 27  
 BRADFORD TWP  
 T2N R14E  
 S 1/4 COR  
 SEC 27

*Donald Barnes*  
 April 15, 2010