

# U.S. PUBLIC LAND SURVEY MONUMENT RECORD

For Public Land Survey Corners In:  
T. 3 N. R. 14 E. 4th P.M.  
CORNER CODE INDEX

WI ADMINISTRATIVE CODE A-E 7.08 REQUIREMENT  
REV 10/23/2004 USMONREC.DWG

JOHNSTOWN TWP  
ROCK COUNTY WI

IF AVAILABLE  
ROCK COUNTY COORDINATES PREFERRED

1	2	3	4	5	6	7	8	9	10	11	12	13	14	15	16	17	18	19	20	21	22	23	24	25	
A																									A
B	6					5					4				3				2				1		B
C																									C
D																									D
E																									E
F																									F
G	7					8					9				10				11				12		G
H																									H
J																									J
K	18					17					16				15				14				13		K
L																									L
M																									M
N																									N
O																									O
P	19					20					21				22				23				24		P
Q																									Q
R																									R
S																									S
T	30					29					28				27				26				25		T
U																									U
V																									V
W																									W
X	31					32					33				34				35				36		X
Y																									Y
Z																									Z

North \_\_\_\_\_ Elev. \_\_\_\_\_

East \_\_\_\_\_

Hor. Datum \_\_\_\_\_ Vert. Datum \_\_\_\_\_

LATITUDE \_\_\_\_\_ ELLIPS. HT. \_\_\_\_\_

LONGITUDE \_\_\_\_\_

NAD83(91) \_\_\_\_\_ NETWORK ADJ. YR \_\_\_\_\_

GPS (X) \_\_\_\_\_ TRAVERSE (X) \_\_\_\_\_

BASED ON THE FOLLOWING CONTROL:

◆ CORNER MONUMENT

○ WITNESS MONUMENT

BEARINGS ARE BASED ON: \_\_\_\_\_

FIELD BOOK \_\_\_\_\_ PAGE # \_\_\_\_\_

SHEET 1 OF 1

SHOW A PLAN VIEW DRAWING DEPICTING THE CORNER MONUMENT AND SURROUNDING PHYSICAL FEATURES, INCLUDING THE EXCAVATION AREA AND DEPTH.

PLANNING & ZONING COMMITTEE ADOPTED THIS FORM ON 12/2/1982

CORNER CODE J-25

**RECORD OF U. S. PUBLIC LAND SURVEY CONTROL STATION**

U. S. PUBLIC LAND SURVEY CORNER 12|7 T 3 N, R 14|15 E, ROCK/WALWORTH COUNTY, WISCONSIN  
13|18

HORIZONTAL CONTROL SURVEY BY: AYRES ASSOCIATES YEAR: 2004  
 VERTICAL CONTROL SURVEY BY: AYRES ASSOCIATES YEAR: 2004

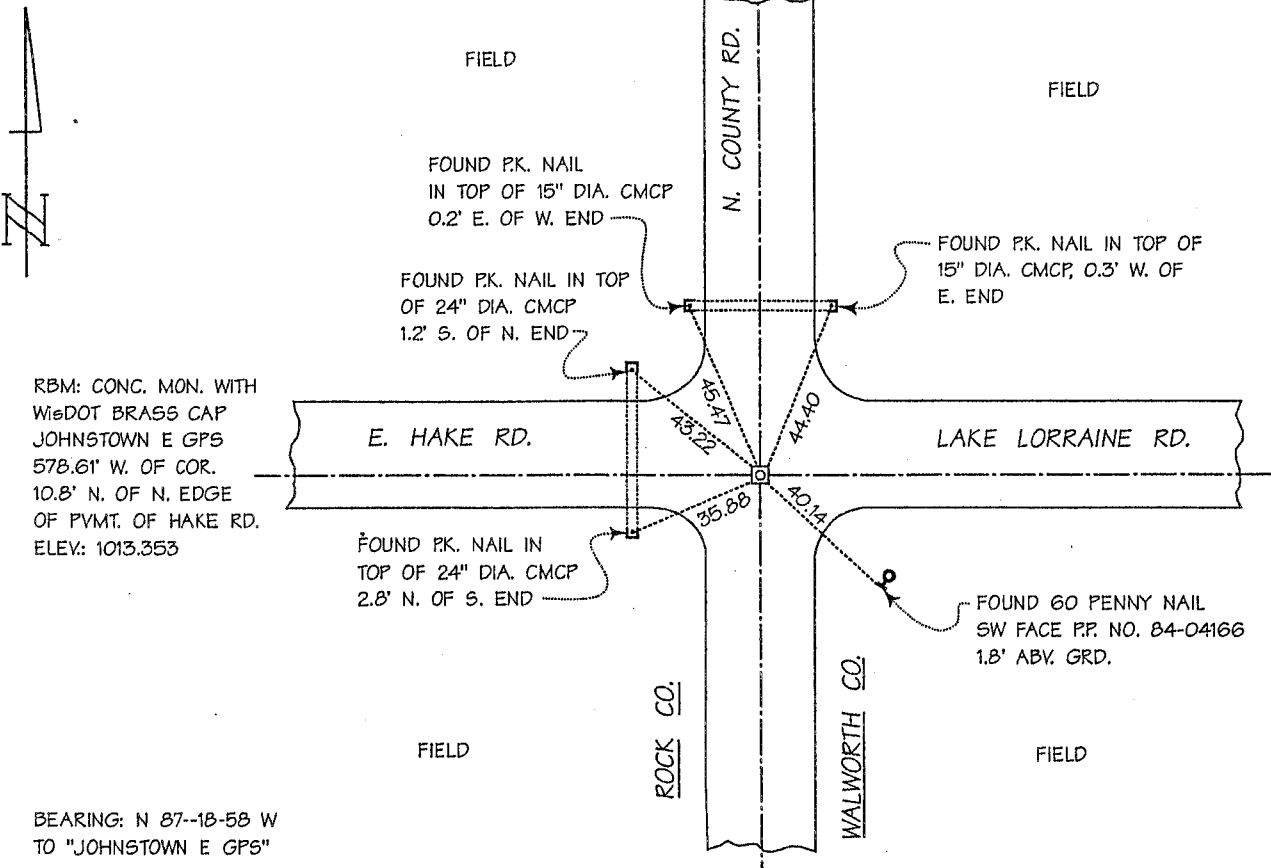
STATE PLANE COORDINATES OF: SECTION CORNER  
 NORTH 266,827.83  
 EAST 2,328,391.26  
 ELEVATION OF STATION: 1011.463

HORIZONTAL DATUM: WISCONSIN STATE PLANE COORDINATE SYSTEM, SOUTH ZONE  
 NORTH AMERICAN DATUM OF 1927

VERTICAL DATUM: NATIONAL GEODETIC VERTICAL DATUM OF 1929 THETA ANGLE: +0-50-22

CONTROL ACCURACY:  
 HORIZONTAL: THIRD ORDER, CLASS I VERTICAL: SECOND ORDER, CLASS II

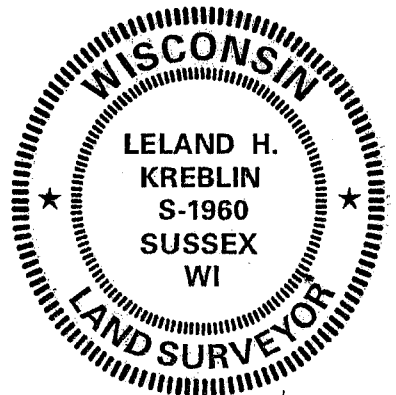
LOCATION SKETCH:



SURVEYOR'S AFFIDAVIT:

STATE OF WISCONSIN) SS  
 WALWORTH COUNTY)

As Walworth County Surveyor, I hereby certify that I found a concrete monument with Walworth County brass cap as set to mark this corner in December 1974 by Harold H. Kolb, S-187; by extending a straight line from the northwest corner of Section 7, Township 3 North, Range 15 East, southerly through the west one-quarter corner of said Section 7; the terminus of said extended line having been determined by Mr. Kolb to be located at a distance from said west-one-quarter corner which was equal to the distance from said northwest corner to said west one-quarter corner; excavation at this corner location by Mr. Kolb did not reveal any evidence of monumentation; that I referenced the same as shown hereon; and that this record is correct and complete to the best of my knowledge and belief.



DATE OF SURVEY: 26 AUGUST 2003 Leland H. Kreblin S - 1960  
 REVISED: 19 MARCH 2005 REGISTERED LAND SURVEYOR

J-25