

# U.S. PUBLIC LAND SURVEY MONUMENT RECORD

For Public Land Survey Corners In:  
T. 3 N. R. 14 E. 4th P.M.  
CORNER CODE INDEX

WI ADMINISTRATIVE CODE A-E 7.08 REQUIREMENT  
REV 10/23/2004 USMONREC.DWG

1	2	3	4	5	6	7	8	9	10	11	12	13	14	15	16	17	18	19	20	21	22	23	24	25	
A																									A
B	6																								B
C		5																							C
D			4																						D
E				3																					E
F					2																				F
G						1																			G
H	7																								H
I		8																							I
J			9																						J
K				10																					K
L					11																				L
M						12																			M
N							13																		N
O								14																	O
P									15																P
Q										16															Q
R											17														R
S												18													S
T													19												T
U														20											U
V															21										V
W																22									W
X																	23								X
Y																		24							Y
Z																			25						Z

JOHNSTOWN TWP  
ROCK COUNTY WI

IF AVAILABLE  
ROCK COUNTY COORDINATES PREFERRED

North \_\_\_\_\_ Elev. \_\_\_\_\_

East \_\_\_\_\_

Hor. Datum \_\_\_\_\_ Vert. Datum \_\_\_\_\_

LATITUDE \_\_\_\_\_ ELLIPS. HT. \_\_\_\_\_

LONGITUDE \_\_\_\_\_

NAD83(91) \_\_\_\_\_ NETWORK ADJ. YR \_\_\_\_\_

GPS (X) \_\_\_\_\_ TRAVERSE (X) \_\_\_\_\_

BASED ON THE FOLLOWING CONTROL:

PLACE MONUMENT SYMBOL  AT PROPER LOCATION ON ABOVE INDEX

CORNER MONUMENT       WITNESS MONUMENT

BEARINGS ARE BASED ON: \_\_\_\_\_

FIELD BOOK \_\_\_\_\_ PAGE # \_\_\_\_\_ SHEET 1 OF 1

SHOW A PLAN VIEW DRAWING DEPICTING THE CORNER MONUMENT AND SURROUNDING PHYSICAL FEATURES, INCLUDING THE EXCAVATION AREA AND DEPTH.

PLANNING & ZONING COMMITTEE ADOPTED THIS FORM ON 12/2/1982

CORNER CODE E-25

**RECORD OF U. S. PUBLIC LAND SURVEY CONTROL STATION**

U. S. PUBLIC LAND SURVEY CORNER 16 T 3 N, R 14/15 E, ROCK/WALWORTH COUNTY, WISCONSIN  
12/7

HORIZONTAL CONTROL SURVEY BY: AYRES ASSOCIATES YEAR: 2004  
 VERTICAL CONTROL SURVEY BY: AYRES ASSOCIATES YEAR: 2004

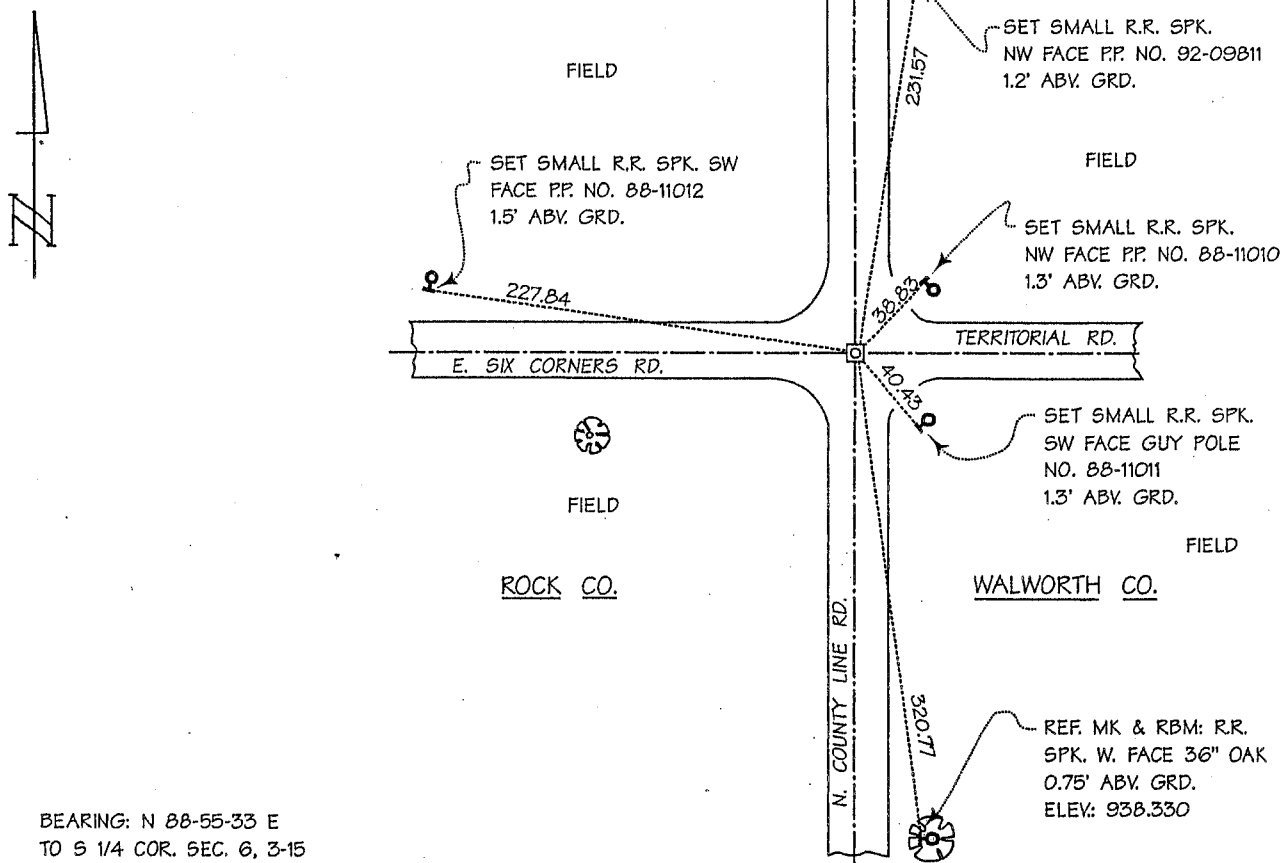
STATE PLANE COORDINATES OF: SECTION CORNER  
 NORTH 272,107.56  
 EAST 2,328,235.84  
 ELEVATION OF STATION: 936.395

HORIZONTAL DATUM: WISCONSIN STATE PLANE COORDINATE SYSTEM, SOUTH ZONE  
 NORTH AMERICAN DATUM OF 1927

VERTICAL DATUM: NATIONAL GEODETIC VERTICAL DATUM OF 1929 THETA ANGLE: +0-50-22

CONTROL ACCURACY:  
 HORIZONTAL: THIRD ORDER, CLASS I VERTICAL: SECOND ORDER, CLASS II

LOCATION SKETCH:

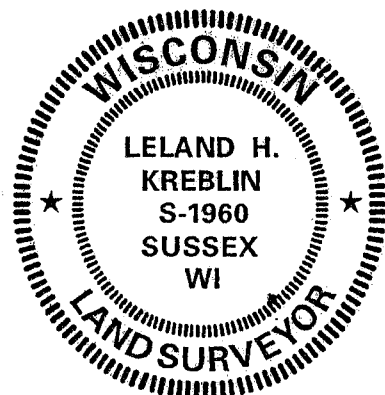


BEARING: N 88-55-33 E  
 TO S 1/4 COR. SEC. 6, 3-15

SURVEYOR'S AFFIDAVIT:

STATE OF WISCONSIN) SS  
WALWORTH COUNTY)

As Walworth County Surveyor, I hereby certify that I set a cut limestone monument with Walworth County brass cap to mark this corner; replacing a broken plastic monument with Rock County aluminum cap, said plastic monument having been found to be located in agreement with a concrete monument with Walworth County brass cap set to mark this corner in 1975 by Eugene A. Blomquist, S-1279; replacing a "P.K." nail set in the bituminous pavement then marking this corner, the location of said "P.K." nail having been found by Mr. Blomquist to be located in agreement with recorded distances to adjacent one-quarter section corners to the north and south; that I referenced the same as shown hereon; and that this record is correct and complete to the best of my knowledge and belief.



DATE OF SURVEY: 26 APRIL 2004 Leland H. Kreblin S - 1960  
 REVISED: 19 MARCH 2005 REGISTERED LAND SURVEYOR

E-25