

U.S. PUBLIC LAND SURVEY MONUMENT RECORD

For Public Land Survey Corners In:
T. 3 N. R. 14 E. 4th P.M.

WI ADMINISTRATIVE CODE A-E 7.08 REQUIREMENT

REV 10/23/2004

USMONREC.DWG

CORNER CODE INDEX

	1	2	3	4	5	6	7	8	9	10	11	12	13	14	15	16	17	18	19	20	21	22	23	24	25
A																									
B																									
C																									
D																									
E																									
F																									
G																									
H																									
J																									
K																									
L																									
M																									
N																									
O																									
P																									
Q																									
R																									
S																									
T																									
U																									
V																									
W																									
X																									
Y																									
Z																									

JOHNSTOWN TWP
ROCK COUNTY WI

IF AVAILABLE
ROCK COUNTY COORDINATES PREFERRED

North _____ Elev. _____

East _____

Hor. Datum _____ Vert. Datum _____

LATITUDE _____ ELLIPS. HT. _____

LONGITUDE _____

NAD83(91) _____ NETWORK ADJ. YR _____

GPS (X) _____ TRAVERSE (X) _____

BASED ON THE FOLLOWING CONTROL:

PLACE MONUMENT SYMBOL AT PROPER LOCATION ON ABOVE INDEX

CORNER MONUMENT

WITNESS MONUMENT

BEARINGS ARE BASED ON: -----

FIELD BOOK _____ PAGE # _____

SHEET 1 OF 1

SHOW A PLAN VIEW DRAWING DEPICTING THE CORNER MONUMENT AND SURROUNDING PHYSICAL FEATURES, INCLUDING THE EXCAVATION AREA AND DEPTH.

PLANNING & ZONING COMMITTEE ADOPTED THIS FORM ON 12/2/1982

CORNER CODE C-25

RECORD OF U. S. PUBLIC LAND SURVEY CONTROL STATION

U. S. PUBLIC LAND SURVEY CORNER 1|6 T 3 N, R 14/15 E, ROCK/WALWORTH COUNTY, WISCONSIN

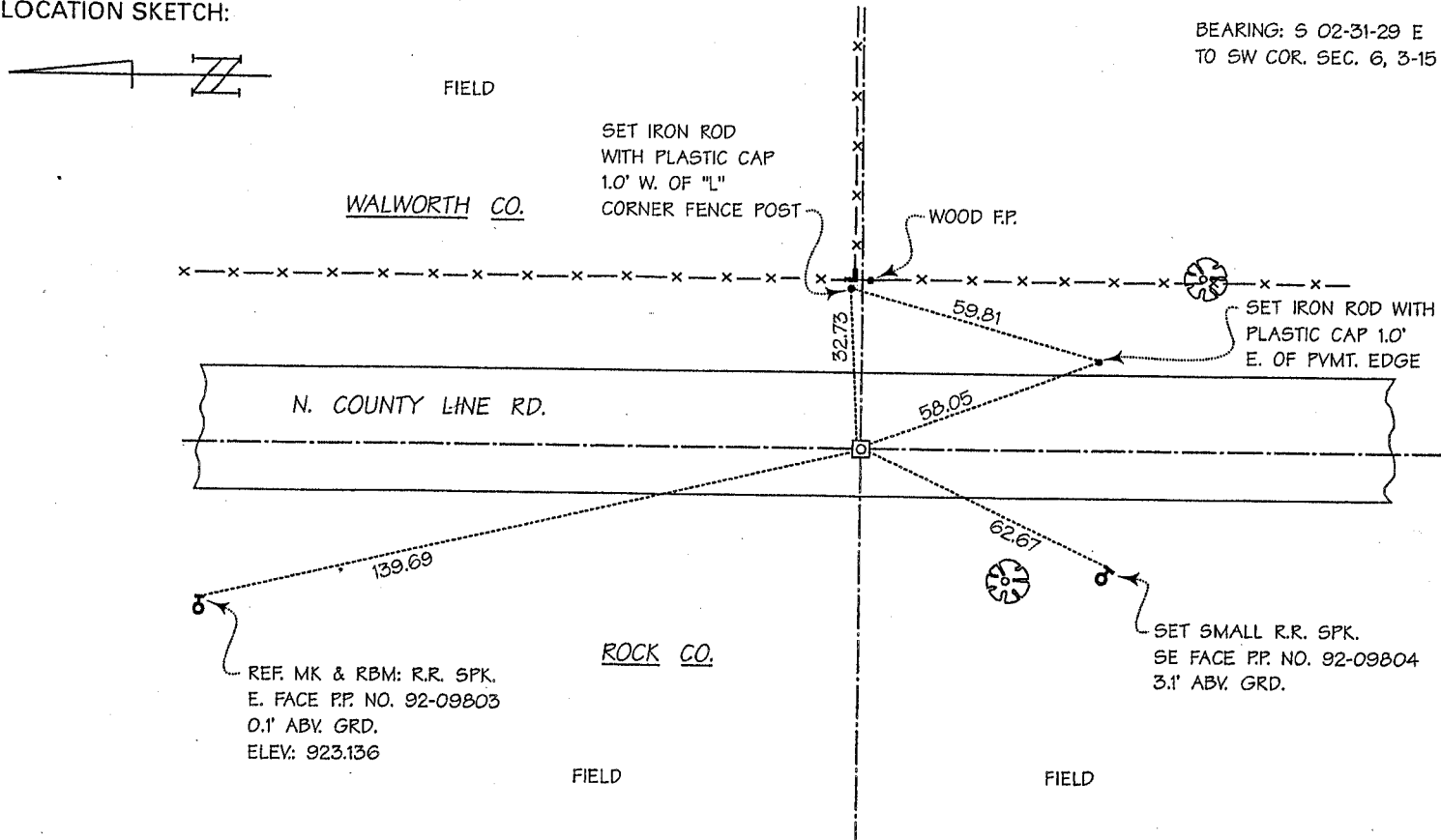
HORIZONTAL CONTROL SURVEY BY: AYRES ASSOCIATES YEAR: 2004
 VERTICAL CONTROL SURVEY BY: AYRES ASSOCIATES YEAR: 2004

STATE PLANE COORDINATES OF: QUARTER SECTION CORNER
 NORTH 274,781.40
 EAST 2,328,117.94
 ELEVATION OF STATION: 926.622

HORIZONTAL DATUM: WISCONSIN STATE PLANE COORDINATE SYSTEM, SOUTH ZONE
 NORTH AMERICAN DATUM OF 1927

VERTICAL DATUM: NATIONAL GEODETIC VERTICAL DATUM OF 1929
 CONTROL ACCURACY: HORIZONTAL: THIRD ORDER, CLASS I VERTICAL: SECOND ORDER, CLASS II
 THETA ANGLE: +0-50-21

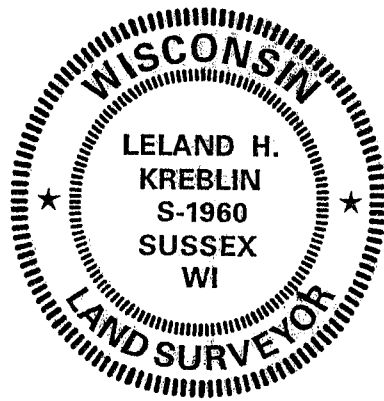
LOCATION SKETCH:



SURVEYOR'S AFFIDAVIT:

STATE OF WISCONSIN) SS
WALWORTH COUNTY)

As Walworth County Surveyor, I hereby certify that I found a concrete monument with Walworth County brass cap as set to mark this corner in July 1973 by Lloyd L. Jensen, S-211, Walworth County Surveyor; replacing a flat stone over a broken "jug" over a still deeper stone--with the long dimension of the stone in a vertical position--in a nest of stones and a still deeper imprint of an old wood stake then marking this corner; that I referenced the same as shown hereon; and that this record is correct and complete to the best of my knowledge and belief.



DATE OF SURVEY: 26 AUGUST 2003 Leland H. Kreblin S - 1960
 REVISED: 19 MARCH 2005 REGISTERED LAND SURVEYOR