

U.S. PUBLIC LAND SURVEY MONUMENT RECORD

For Public Land Survey Corners In:
T. 3 N. R. 14 E. 4th P.M.
CORNER CODE INDEX

WI ADMINISTRATIVE CODE A-E 7.08 REQUIREMENT
REV 10/23/2004 USMONREC.DWG

JOHNSTOWN TWP
ROCK COUNTY WI
IF AVAILABLE
ROCK COUNTY COORDINATES PREFERRED

1	2	3	4	5	6	7	8	9	10	11	12	13	14	15	16	17	18	19	20	21	22	23	24	25	
A																									A
B	6					5					4					3					2			1	B
C																									C
D																									D
E																									E
F																									F
G	7					8					9				10						11			12	G
H																									H
J																									J
K																									K
L	18					17					16				15						14			13	L
M																									M
N																									N
O																									O
P	19					20					21				22						23			24	P
Q																									Q
R																									R
S																									S
T	30					29					28				27						26			25	T
U																									U
V																									V
W																									W
X	31					32					33				34						35			36	X
Y																									Y
Z																									Z

North _____ Elev. _____

East _____

Hor. Datum _____ Vert. Datum _____

LATITUDE _____ ELLIPS. HT. _____

LONGITUDE _____

NAD83(91) _____ NETWORK ADJ. YR _____

GPS (X) _____ TRAVERSE (X) _____

BASED ON THE FOLLOWING CONTROL:

PLACE MONUMENT SYMBOL AT PROPER LOCATION ON ABOVE INDEX

CORNER MONUMENT WITNESS MONUMENT

BEARINGS ARE BASED ON: _____

FIELD BOOK _____ PAGE # _____ SHEET 1 OF 1

SHOW A PLAN VIEW DRAWING DEPICTING THE CORNER MONUMENT AND SURROUNDING PHYSICAL FEATURES, INCLUDING THE EXCAVATION AREA AND DEPTH.

PLANNING & ZONING COMMITTEE ADOPTED THIS FORM ON 12/2/1982

CORNER CODE X-25

RECORD OF U. S. PUBLIC LAND SURVEY CONTROL STATION

U. S. PUBLIC LAND SURVEY CORNER 36|31 T 3 N, R 14/15 E, ROCK/WALWORTH COUNTY, WISCONSIN
36|31

HORIZONTAL CONTROL SURVEY BY: AYRES ASSOCIATES YEAR: 2004
 VERTICAL CONTROL SURVEY BY: AYRES ASSOCIATES YEAR: 2004

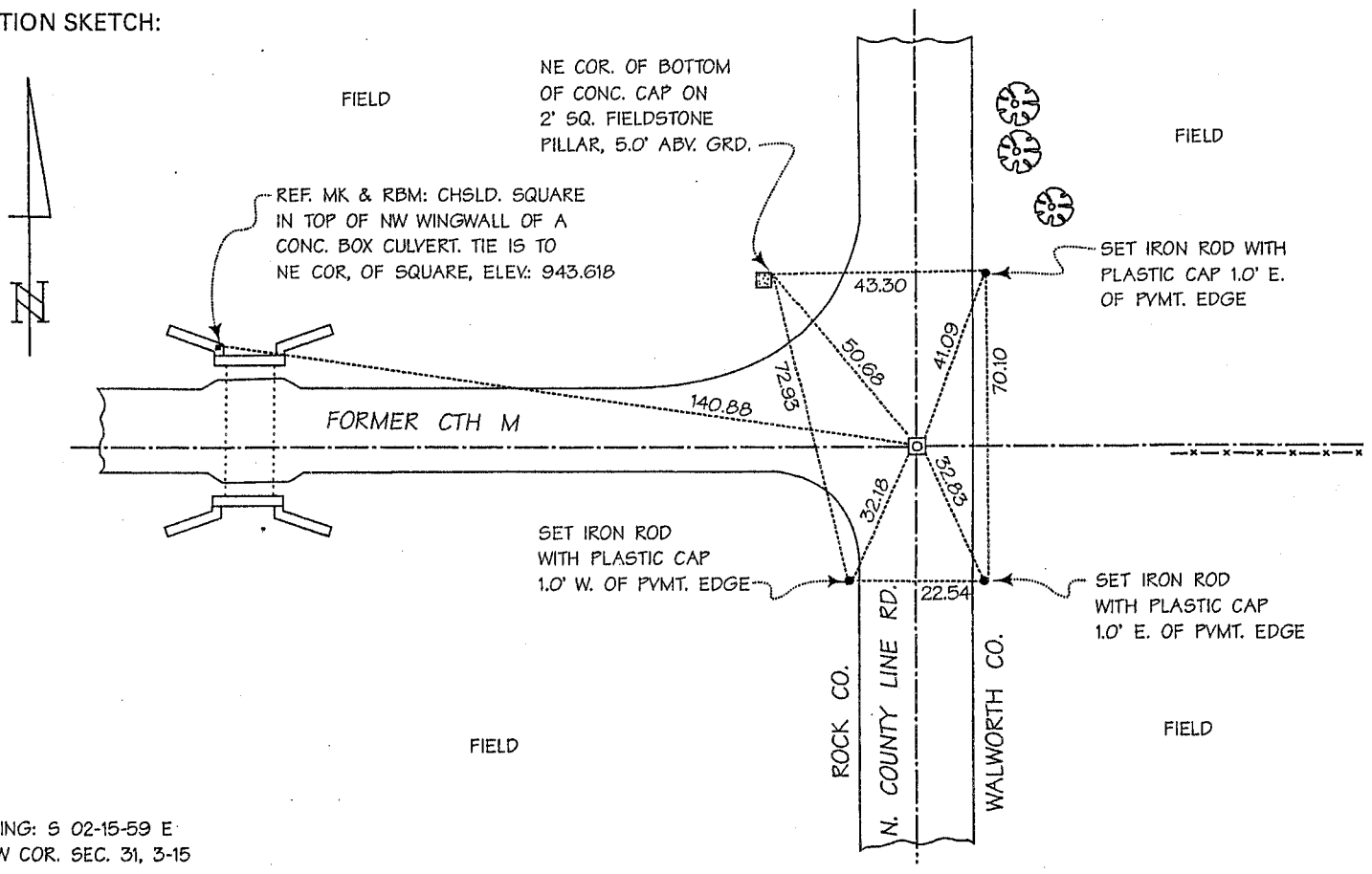
STATE PLANE COORDINATES OF: QUARTER SECTION CORNER
 NORTH 248,343.71
 EAST 2,328,983.27
 ELEVATION OF STATION: 945.343

HORIZONTAL DATUM: WISCONSIN STATE PLANE COORDINATE SYSTEM, SOUTH ZONE
 NORTH AMERICAN DATUM OF 1927

VERTICAL DATUM: NATIONAL GEODETIC VERTICAL DATUM OF 1929 THETA ANGLE: +0-50-25

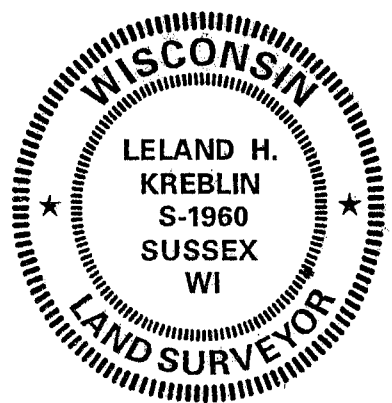
CONTROL ACCURACY:
 HORIZONTAL: THIRD ORDER, CLASS I VERTICAL: SECOND ORDER, CLASS II

LOCATION SKETCH:



SURVEYOR'S AFFIDAVIT:
 STATE OF WISCONSIN) SS
WALWORTH COUNTY)

As Walworth County Surveyor, I hereby certify that I found an aluminum monument with Rock County aluminum cap as set to mark this corner in February 1977 by Donald M. Barnes, S-1216, Rock County Surveyor; replacing a subsurface two-inch-diameter iron pipe set to mark this corner in December 1935 by B.J. Sunny, Rock County Surveyor; replacing remnants of an old wood post then marking this corner, said post having been set to mark this corner in the fall of 1835 by John Mullett, Deputy United States Surveyor, in the conduct of the original United States Public Land Survey; that I referenced the same as shown hereon; and that this record is correct and complete to the best of my knowledge and belief.



DATE OF SURVEY: 2 SEPTEMBER 2003 Leland H. Kreblin S - 1960
 REVISED: 2 APRIL 2005 REGISTERED LAND SURVEYOR

+25