

U.S. PUBLIC LAND SURVEY MONUMENT RECORD

For Public Land Survey Corners in:

WI ADMINISTRATIVE CODE A-E 7.08 REQUIREMENT

T. 3 N., R. 4E

CORNER CODE INDEX

A	1	2	3	4	5	6	7	8	9	10	11	12	13	14	15	16	17	18	19	20	21	22	23	24	25	
B	6					9				A		3			2										1	
C																										
D																										
E																										
F																										
G	1					8				9		10			11										12	
H																										
I																										
J																										
K																										
L	13					11				10		15			14											13
M																										
N																										
O																										
P	19					20				21		22			23										24	
Q																										
R																										
S																										
T	30					29				28		27			26										25	
U																										
V																										
W																										
X	31					32				33		34			35										30	
Y																										
Z																										

JOHNSTOWN TWP
ROCK COUNTY WI

IF AVAILABLE
ROCK COUNTY COORDINATES PREFERRED

North _____ Elev. _____

East _____

Hor. Datum _____ Vert. Datum _____

LATITUDE _____ ELLIPS. HT. _____

LONGITUDE _____

GPS (X) _____ TRAVERSE (X) _____

BASED ON THE FOLLOWING CONTROL:

PLACE MONUMENT SYMBOL AT PROPER LOCATION ON ABOVE INDEX

CORNER MONUMENT

WITNESS MONUMENT

(a)

BEARINGS ARE BASED ON:

FIELD BOOK _____ PAGE # _____

SHEET 1 OF 2

SHOW A PLAN VIEW DRAWING DEPICTING THE CORNER MONUMENT AND SURROUNDING PHYSICAL FEATURES, INCLUDING THE EXCAVATION AREA AND DEPTH.

PLANNING & ZONING COMMITTEE ADOPTED THE ABOVE FORM ON 12/2/1982

CORNER CODE X-21

J0619

(B) Describe any record evidence, monument evidence, occupational evidence, testimonial evidence or any other material evidence you considered, and whether the monument was found or placed.

- 1905 RUGER VOL 5 PG 321 FOUND REMAINS OF OLD STAKE. DROVE STAKE DEEP & PUT LIMESTONE 9X6X2 ½ ON TOP. 2641.98' TO CENTER OF SEC 35 & 5290.56' TO W ¼ COR SEC 35.
- 1909 KERCH VOL 3 PG 55 FOUND STONE. 2633.15 TO NE COR SEC 35.
- 1937 SUNNY VOL 3 PG 360 FOUND 4X6X12 LIMESTONE OVER STAKE HOLE SURROUNDED BY 4 BOULDERS. SET 1 ½ X12 PIPE ON TOP FOR COR. REFERENCED SAME.
- 1977 BARNES VOL 5 PG 358 FOUND 1 ½ X 8" IP. 2' DEEP FOUND 1" PIPE SURROUNDED BY 4 HARD HEADS. SET ALUM. MON.
- 1977 BARNES VOL 5 PG 237 FOUND 1 ½ IP 0.2' BELOW ROAD SURFACE. REFERENCED SAME.
- 1983 BARNES REMONUMENTATION. S1-16-48E 2634.66' TO SE COR SEC 35, ,1-04-49W 2633.63 (KERCH 2633.15) TO NE COR SEC 35; & N88-36-57W 5289.42 (RUGER 5290.56) TO W ¼ COR SEC 35.

FOUND ALUM. MON. 0.25' DEEP & NORTH REFERENCE PIPE. PAVEMENT WILL GROUND OUT & ROAD RESURFACED.

C) Was the corner restored through acceptance of (1) an obliterated evidence location, or, (2) a found perpetuated location?

ACCEPTED FOUND MONUMENT.

D) Describe any material discrepancy between the location of the corner as restored or reestablished and the location of that corner as previously restored or reestablished by distance and direction. Show the discrepancy on the plan view drawing under (a), above. Show the distances between the corner as previously restored or reestablished and (1) the corner as restored or reestablished, and (2) to at least 4 of the witness monuments shown on the drawing in (a), above.

(E) Was the corner reestablished through lost corner proportionate methods? If so, show the method, including the directions and distances to other public land survey corners used as evidence or used for proportioning the corner location.

I, Donald Barnes, hereby certify that the corner location as identified by the corner code index was determined by me under my direction and control and that this U.S. Public Land Survey Monument Record is correct and complete to the best of my knowledge and belief.

seal

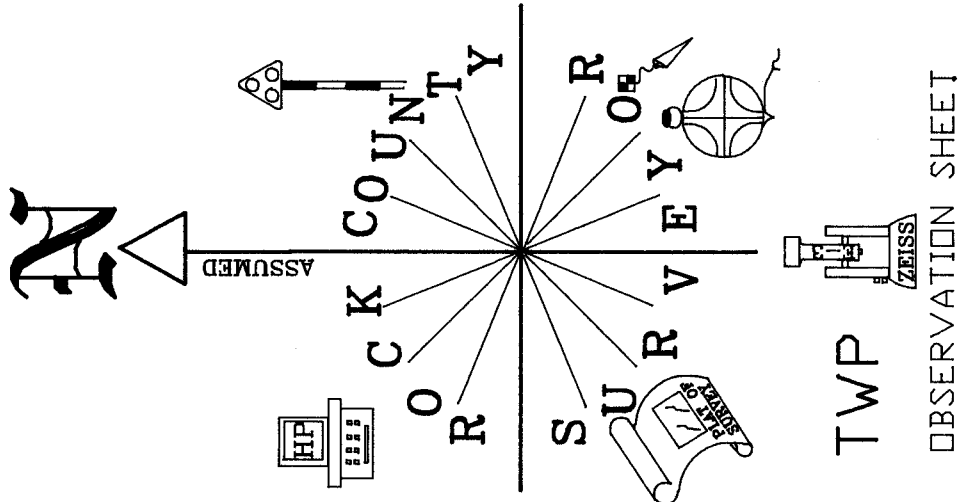
Donald Barnes

Number of included sheets 1

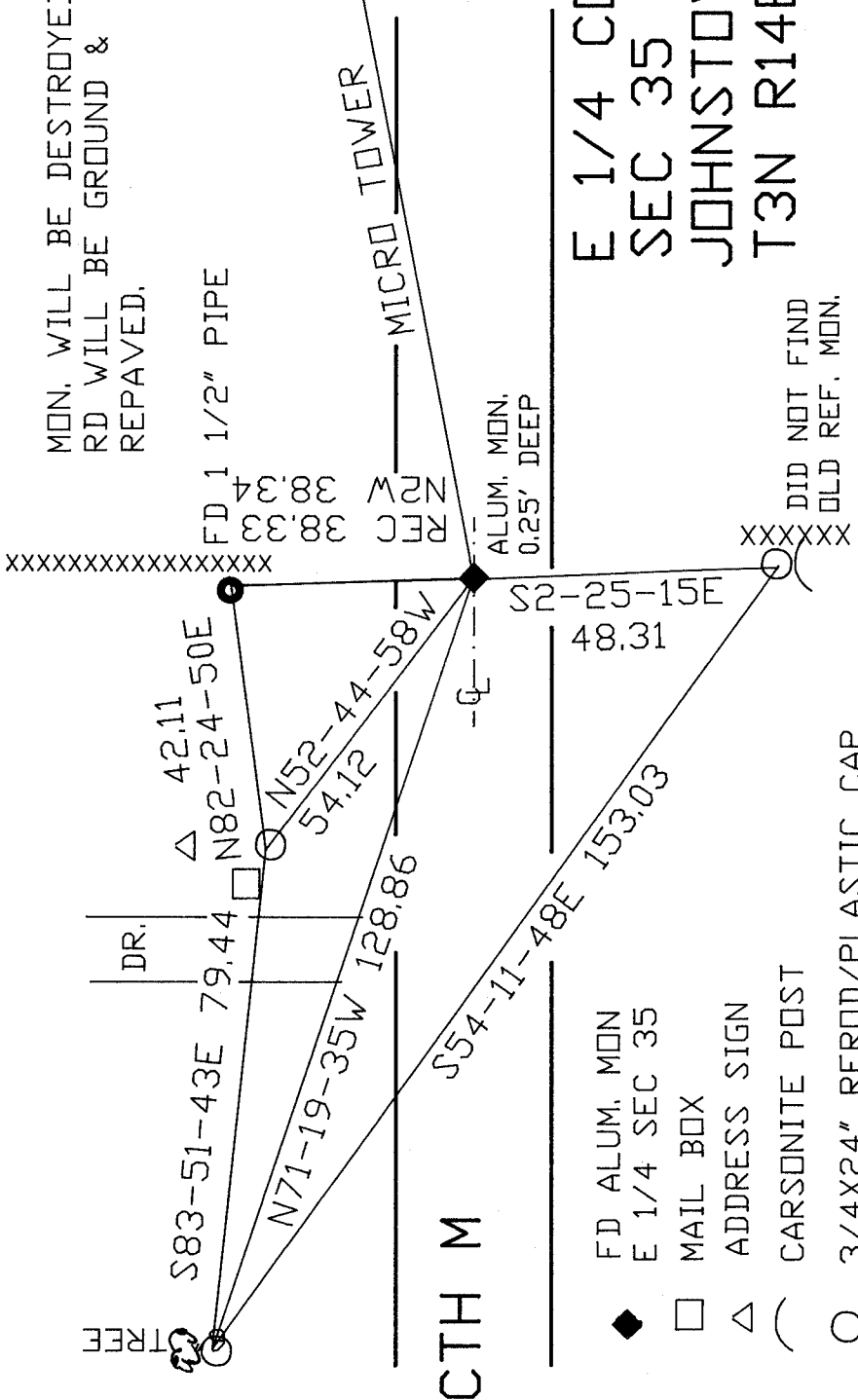
emboss
OCT 26, 2000

CORNER CODE X-21

A-E 7.08 REQUIREMENT



MON. WILL BE DESTROYED,
RD WILL BE GROUND &
REPAVED.



E 1/4 COR
SEC 35
JOHNSTOWN TWP
T3N R14E

OBSERVATION SHEET

TREE

- ◆ FD ALUM. MON
- E 1/4 SEC 35
- MAIL BOX
- △ ADDRESS SIGN
- CARSONITE POST
- 3/4X24" REROD/PLASTIC CAP

DID NOT FIND
OLD REF. MON.

Donald Barnes
EMBOSSED SEAL

OCT 26, 2000

X-21