

# U.S. PUBLIC LAND SURVEY MONUMENT RECORD

For Public Land Survey Corners in:

WI ADMINISTRATIVE CODE A-E 7.08 REQUIREMENT

T. 3 N., R. 14 E

### CORNER CODE INDEX

A	1	2	3	4	5	6	7	8	9	10	11	12	13	14	15	16	17	18	19	20	21	22	23	24	25
B																									
C	6																								
D																									
E																									
F																									
G	1																								
H																									
I																									
J																									
K																									
L	18																								
M																									
N																									
O																									
P	19																								
Q																									
R																									
S	◆																								
T	30																								
U																									
V																									
W																									
X	31																								
Y																									
Z																									

JOHNSTOWN TWP  
ROCK COUNTY WI

IF AVAILABLE  
ROCK COUNTY COORDINATES PREFERRED

North \_\_\_\_\_ Elev. \_\_\_\_\_

East \_\_\_\_\_

Hor. Datum \_\_\_\_\_ Vert. Datum \_\_\_\_\_

LATITUDE \_\_\_\_\_ ELLIPS. HT. \_\_\_\_\_

LONGITUDE \_\_\_\_\_

GPS (X) \_\_\_\_\_ TRAVERSE (X) \_\_\_\_\_

BASED ON THE FOLLOWING CONTROL:

PLACE MONUMENT SYMBOL **◆** AT PROPER LOCATION ON ABOVE INDEX

**◆** CORNER MONUMENT

**○** WITNESS MONUMENT

(a)

BEAIFINGS ARE BASED ON:

FIELD BOOK \_\_\_\_\_ PAGE # \_\_\_\_\_

SHEET 1 OF 3

SHOW A PLAN VIEW DRAWING DEPICTING THE CORNER MONUMENT AND SURROUNDING PHYSICAL FEATURES, INCLUDING THE EXCAVATION AREA AND DEPTH.

PLANNING & ZONING COMMITTEE ADOPTED THE ABOVE FORM ON 12/2/1982

CORNER CODE R-3

J0582

(B) Describe any record evidence, monument evidence, occupational evidence, testimonial evidence or any other material evidence you considered, and whether the monument was found or placed.

- 1861 RUGER VOL 1 PG 169 SET HH 13X7X6 VAR 4-58 2626.8 TO NE COR SEC 30, VAR 5-28 2595.78 TO NW COR SEC 30. USED TO SUBDIVIDE SEC 30. CENTER OF SEC 30 TO E 1/4 COR SEC 30 IS 2614.92, & 2597.76? TO W 1/4 COR SEC 30.
- 1861 RUGER VOL 1 PG 171 REPEAT OF INFORMATION ON PG 169. USED TO SUBDIVIDE SEC 19. CEN SEC 19 TO E 1/4 COR SEC 19 IS VAR5-22 2626.8' & 2580.93 TO W 1/4 COR SEC 19.
- 1936 SUNNY VOL 3 PG 300 FD 5X7X14 L.S. 14" LONG. SET 1 1/2 IRON PIPE ON TOP. CAPPED. REFERENCED TO 3 TREES & DIRECTLY NORTH 32.4 TO SOMETHING AT FENCE INT.
- 1961 BATTERMAN VOL 4 PG 120 FD WITNESS TREES BY SUNNY. SET SPIKE. REFERENCED WITH PIPES.
- 1961 BATTERMAN #02369 SET 1" PIPE AT S 1/4 COR ACCORDING TO COUNTY SURVEYOR RECORD (BJ SUNNY 1938). ANGLE 92-51 @ SW COR SEC 19 FROM W 1/4 COR SEC 19 TO S 1/4 COR SEC 19
- 1966 SHIMEALL #2422 ANGLE 92-05 @ NE COR SEC 30 FROM SEC LINE TO NORTH SEC LINE OF NE 1/4 SEC 30
- 1973 SHIMEAL #2423 ANGLE 92-05 @ NE COR SEC 30 FROM SEC LINE TO NORTH SEC LINE OF NE 1/4 SEC 30
- 1981 BARNES VOL 6 PG 182 FD TIES, BATTERMAN'S R/R SPIKE & SUNNY'S 2" PIPE.
- 1983 BARNES VOL 6 PG 297 FD R/R SPIKE, 0.40 EAST OF R/R A 2" PIPE 1' BELOW RD, & 3 REFERENCE PIPES. REPLACED 2" IP WITH ALUM. MON. PIPE IS 0.40' EAST OF R/R SPIKE. SHOWS NORTH OF CENTER OF PVMT.
- 2003 COMBS CSM VOL 26 PG 112 PK @ N 1/4 COR SEC 30. NW COR OF 465.0' WIDE LOT IS 321.88 EAST OF 1/4 COR.

FD BROKEN ALUM. 2.0' DEEP @ CENTER OF PVMT. BOTTOM OF MON. IS VERY SECURE. SET 2 MAGNETS ON SIDE OF MON. SET 3/4" X24 REROD WITH PLASTIC CAP ON TOP OF ALUM. MON. ALUM. WAS BROKEN BY OLD RESURFACING PROJECT

C) Was the corner restored through acceptance of (1) an obliterated evidence location, or, (2) a found perpetuated location?

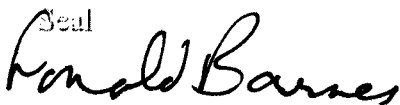
ACCEPTED FD BROKEN ALUM. MON.

D) Describe any material discrepancy between the location of the corner as restored or reestablished and the location of that corner as previously restored or reestablished by distance and direction. Show the discrepancy on the plan view drawing under (a), above. Show the distances between the corner as previously restored or reestablished and (1) the corner as restored or reestablished, and (2) to at least 4 of the witness monuments shown on the drawing in (a), above.

BATTERMAN PLACED A R/R SPIKE FROM SUNNY'S BEARING TREES BUT SUNNY'S PIPE WAS ACTUALLY 0.40 EAST OF THE POSITION. IN 1981 I FD THE R/R SPIKE & SUNN'Y PIPE. I ACCEPTED THE PIPE.

(E) Was the corner reestablished through lost corner proportionate methods? If so, show the method, including the directions and distances to other public land survey corners used as evidence or used for proportioning the corner location.

I, Donald Barnes, hereby certify that the corner location as identified by the corner code index was determined by me under my direction and control and that this U.S. Public Land Survey Monument Record is correct and complete to the best of my knowledge and belief.

Seal  


Emboss

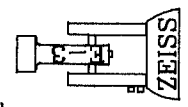
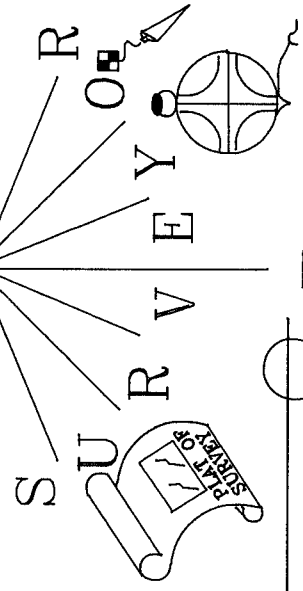
05/17/2004

SHEET 1 OF 3

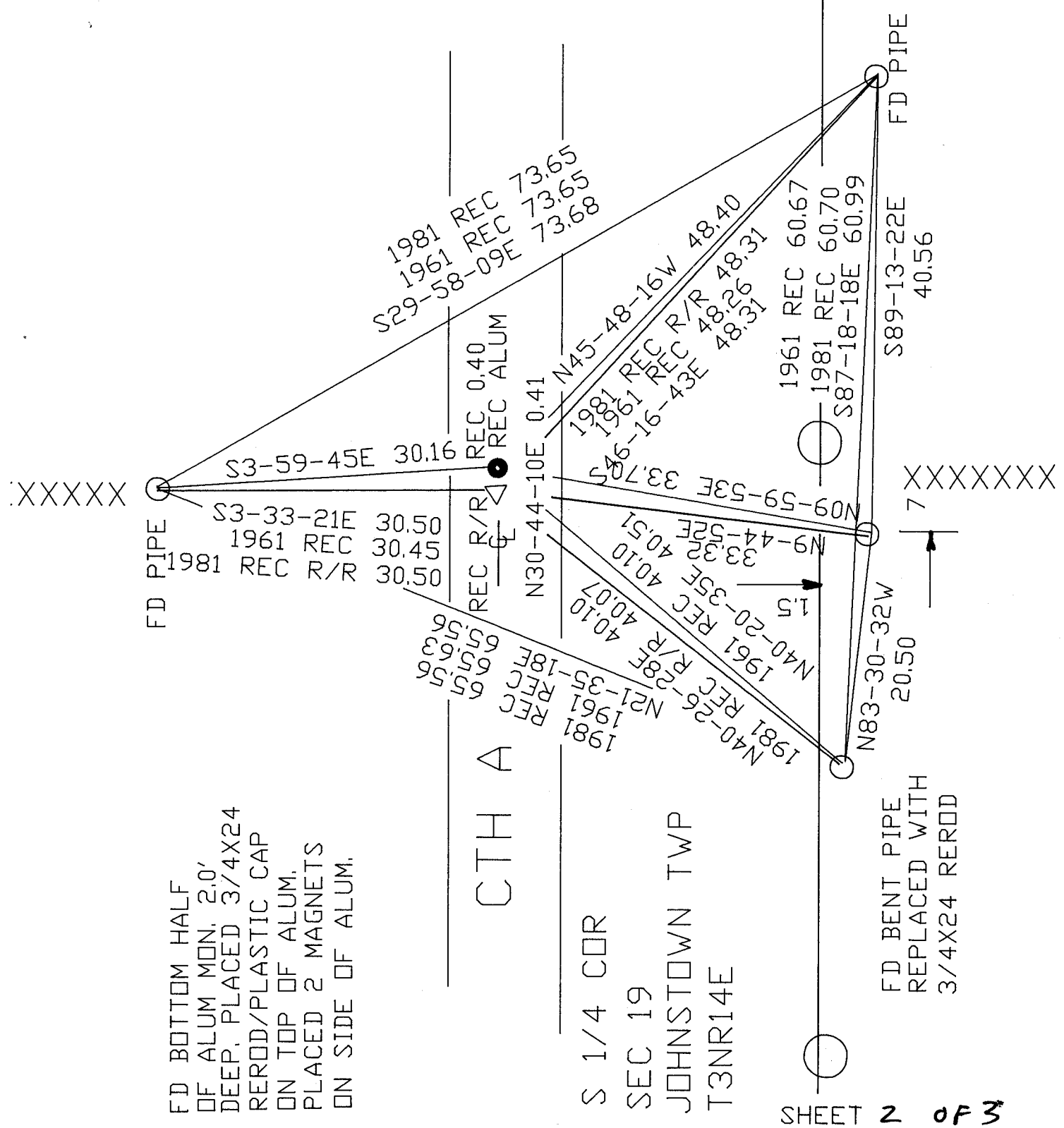
**A**

ROCK COUNTY  
PROJECTION

ROCK COUNTY  
SURVEY



NOT TO SCALE  
OBSERVATION SHEETS



XXXXXX

XXXXXX

FD BOTTOM HALF  
OF ALUM MON. 2.0'  
DEEP. PLACED 3/4X24  
REROD/PLASTIC CAP  
ON TOP OF ALUM.  
PLACED 2 MAGNETS  
ON SIDE OF ALUM.

CTH A

S 1/4 COR  
SEC 19  
JOHNSTOWN TWP  
T3NR14E

FD BENT PIPE  
REPLACED WITH  
3/4X24 REROD

SHEET 2 OF 3

EMBOSSSED  
SEAL

*Dwight Barnes*  
Oct 17 2004

R-13

FD ALUM

N1-16-59W 2644.77  
1983 TWP PRDJ N1-08-23W 2644.80  
1961 BATTERMAN #2369 2643.39

*Donald Barnes*

SEPT 1961  
MINI COOPER  
SHEETS

1961 BATTERMAN 92-51  
REC R/R 92-48-23  
92-47-55

FD BROKEN  
ALUM MON

S88-29-05E 2601.88  
1861 RUGER 1-169 VAR5-28 2595.78

S88-06-44E 2635.94  
1861 RUGER 1-169 VAR4-58 2626.80

FD BROKEN  
ALUM MON

FD PIPE

CO

SEPT

3 OF 3

~~3~~

R-3

3

1966&1973 SHIMEAL 92-05  
92-38-22