

U.S. PUBLIC LAND SURVEY MONUMENT RECORD

For Public Land Survey Corners in:

WI ADMINISTRATIVE CODE A-E 7.08 REQUIREMENT

T. 3N., R. 14E

CORNER CODE INDEX

A	1	2	3	4	5	6	7	8	9	10	11	12	13	14	15	16	17	18	19	20	21	22	23	24	25
B	6					9					4				3						2				1
C																									
D																									
E																									
F																									
G	1					8						9			10					11			12		
H																									
I																									
J																									
K	18					17						16			15					14			13		
L																									
M																									
N																									
O																									
P	19					20						21			22					23			24		
Q																									
R																									
S																									
T	30					29						28			27					26			25		
U																									
V																									
W																									
X	31					32						33			34					35			36		
Y																									
Z																									

JOHNSTOWN TWP
ROCK COUNTY WI

IF AVAILABLE
ROCK COUNTY COORDINATES PREFERRED

North _____ Elev. _____

East _____

Hor. Datum _____ Vert. Datum _____

LATITUDE _____ ELLIPS. HT. _____

LONGITUDE _____

GPS (X) _____ TRAVERSE (X) _____

BASED ON THE FOLLOWING CONTROL:

PLACE MONUMENT SYMBOL AT PROPER LOCATION ON ABOVE INDEX

CORNER MONUMENT

WITNESS MONUMENT

(a)

BEARINGS ARE BASED ON:

FIELD BOOK _____ PAGE # _____

SHEET 1 OF 2

SHOW A PLAN VIEW DRAWING DEPICTING THE CORNER MONUMENT AND SURROUNDING PHYSICAL FEATURES, INCLUDING THE EXCAVATION AREA AND DEPTH.

PLANNING & ZONING COMMITTEE ADOPTED THE ABOVE FORM ON 12/2/1982

CORNER CODE X-13

J0617

(B) Describe any record evidence, monument evidence, occupational evidence, testimonial evidence or any other material evidence you considered, and whether the monument was found or placed.

- 1860 RUGER VOL 1 PG 138 SET LIMESTONE 15X7X3 ½ & SET LIMESTONE ON NORTH & SOUTH SIDES. VAR 5-13 2633.07' TO CENTER OF SEC 33 & 5266.14' TO W ¼ COR SEC 33
- 1864 LOCKE VOL 1 PG 221 FOUND STONE SET BY RUGER 2650.89 TO CENTER OF SEC 34 & 5301.78' TO E ¼ COR SEC 34.
- 1940 SUNNY VOL 3 PG 461. FOUND LIMESTONE. SET 1 ½ CAPPED PIPE ON TOP FOR CORNER. REFERENCED SAME.
- 1980 BARNES VOL 6 PG 32 FOUND ALUM. MON. N87-29-41W 2639.93 TO CENTER SEC 33 & S0-03-31E 2633.45 TO SE COR SEC 33
- 1981 BARNES VOL 6 PG 193 FOUND 2"X12" CAPPED IP. REPLACED WITH ALUM. MON.
- 1982 BARNES REMONUMENTATION PROJECT. N88-31-40W 2640.04 (RUGER 2633.07') TO CENTER SEC 33; N1-12-42W 2631.35 TO NE COR SEC 33; S1-05-32E 2633.47' TO SE COR SEC 33; S88-38-50E 5304.46 TO E ¼ COR SEC 34; & 5278.58 (RUGER 5266.14) TO W ¼ COR SEC 33.

FOUND ALUM MON. 0.25' DEEP. PAVEMENT WILL BE GROUND & ROAD REPAVED.

C) Was the corner restored through acceptance of (1) an obliterated evidence location, or, (2) a found perpetuated location?


ACCEPTED FOUND MONUMENT.

D) Describe any material discrepancy between the location of the corner as restored or reestablished and the location of that corner as previously restored or reestablished by distance and direction. Show the discrepancy on the plan view drawing under (a), above. Show the distances between the corner as previously restored or reestablished and (1) the corner as restored or reestablished, and (2) to at least 4 of the witness monuments shown on the drawing in (a), above.

(E) Was the corner reestablished through lost corner proportionate methods? If so, show the method, including the directions and distances to other public land survey corners used as evidence or used for proportioning the corner location.

I, Donald Barnes, hereby certify that the corner location as identified by the corner code index was determined by me under my direction and control and that this U.S. Public Land Survey Monument Record is correct and complete to the best of my knowledge and belief.

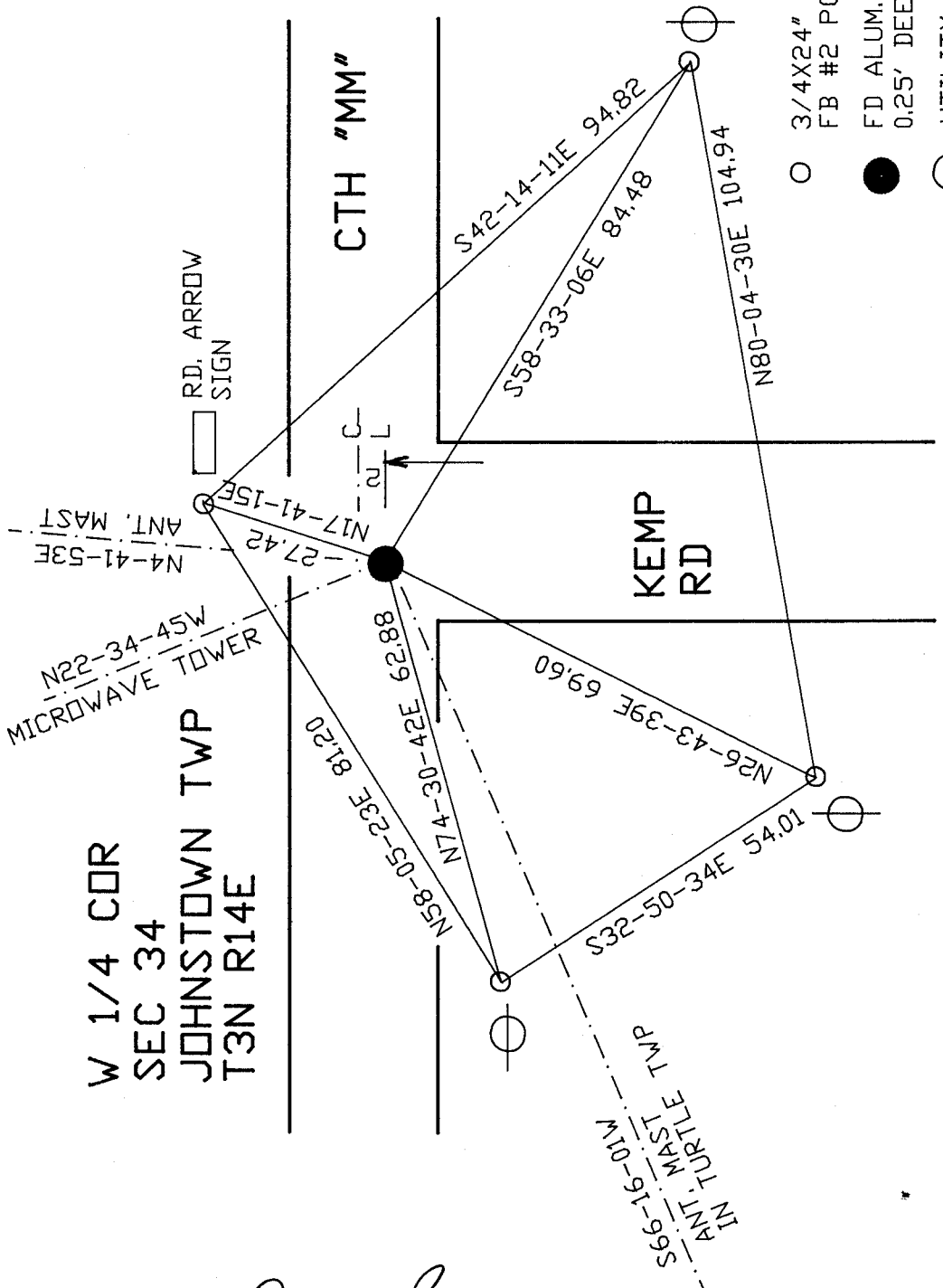
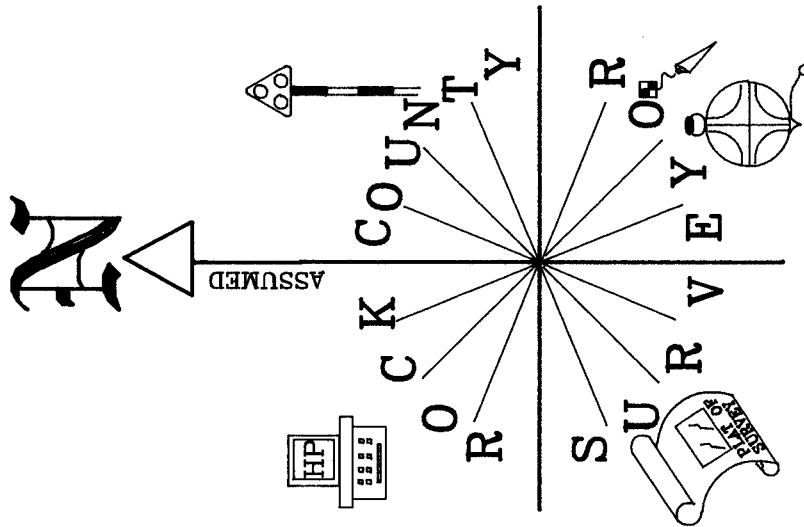
seal


emboss
OCT 26, 2000

Number of included sheets 1

CORNER CODE X-13

A-E 7.08 REQUIREMENT



- 3/4X24" REROD/CAP
FB #2 PG 40
 - FD ALUM. MON.
0.25' DEEP
 - ⊖ UTILITY POLE
- PAVEMENT WILL BE GROUND
& REPAVED

W 1/4 COR
SEC 34
JOHNSTOWN TWP
T3N R14E

EMBOSS SEAL
Donald Barnes
OCT 26, 2000

X-13