

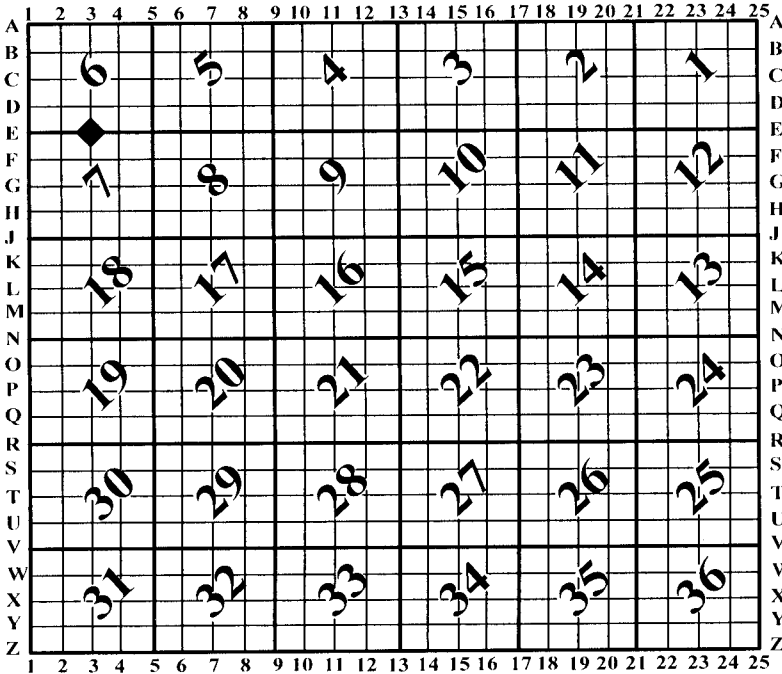
U.S. PUBLIC LAND SURVEY MONUMENT RECORD

For Public Land Survey Corners In: WI ADMINISTRATIVE CODE A-E 7.08 REQUIREMENT

T. 3 N. - R. 10 E. of the 4th P.M.

CORNER CODE INDEX

(PLACE "◆" SYMBOL AT PROPER PLSS CORNER LOCATION)



MAGNOLIA TWP
ROCK COUNTY WI

COORDINATES

(GNSS DERIVED VIA WISCORS)

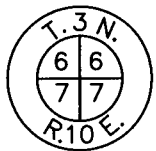
NORTHING: 291902.70 ELEV: N/A
EASTING: 403066.51

Hor. Datum: WISCRS-ROCK, (NA2011)

Vertical Datum: NAVD 88, (If applicable)

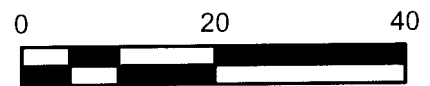
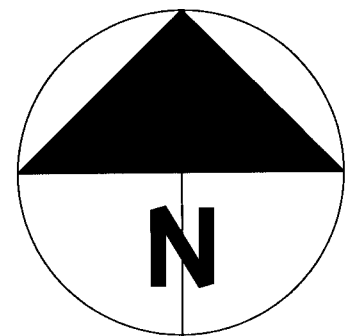
(a) LEGEND

● - 3/4" x 24" REBAR SET W/RED CAP



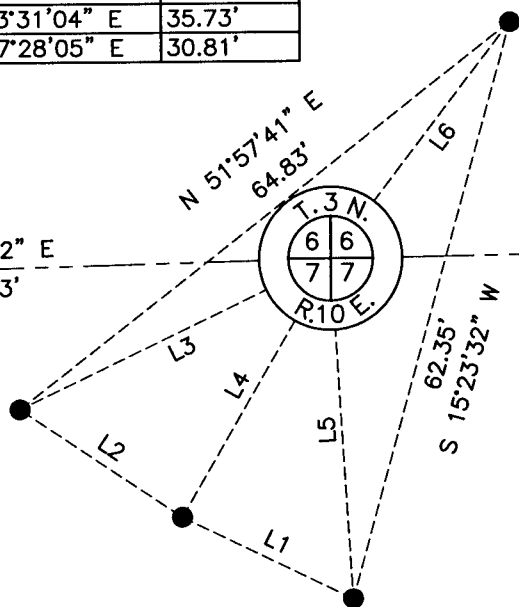
- 7/8" IRON REBAR FOUND

LINE	BEARING	DISTANCE
L1	N 63°41'54" W	19.81'
L2	N 55°47'28" W	20.26'
L3	N 64°23'04" E	35.84'
L4	S 30°04'20" W	31.07'
L5	S 03°31'04" E	35.73'
L6	N 37°28'05" E	30.81'



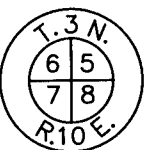
Aluminum mon. found

N 88°41'42" E
2686.23'



N 89°22'51" E
2701.61'

Aluminum mon. found



B) Describe any record evidence, monument evidence, occupational evidence, testimonial evidence or any other material evidence you considered, and whether the monument was found or placed.

I found and a 7/8" iron rebar that is referenced on a Combs survey dated 05/27/2009. The same is filed as Rock County Map number M16201. Based on my research, the corner appears to have been computed by Combs based upon old records however, there is no record stone at this location. Based upon the Combs monument and how it relates to a survey in Section 6, along with matching the South line of the SE quarter within seconds of bearing and 0.01', I accept the 7/8" rebar as found. I set four witnesses per the map.

C) Was the corner restored through acceptance of (1) an obliterated evidence location, or, (2) a found perpetuated location?

Found perpetuated location.

D) Describe any material discrepancy between the location of the corner as restored or reestablished and the location of that corner as previously restored or reestablished by distance and direction. Show the discrepancy on the plan view drawing under (a), above. Show the distances between the corner as previously restored or reestablished and (1) the corner as restored or reestablished, and (2) to at least 4 of the witness monuments shown on the drawing in (a), above.

I did not find a discrepancy between the corner restored and a previously documented corner location. *Discrepancy* being defined as *disagreeing* with a corner location, *not* as noting dimensional differences between current/former tie sheets due to measuring methods. The current and *most recent* tie-sheet dimensions filed for the corner are noted.

(E) Was the corner reestablished through lost corner proportionate methods? If so, show the method, including the directions and distances to other public land survey corners used as evidence or used for proportioning the corner location.

N/A

I, Jason R. Houle, hereby certify that the corner location as identified by the corner code index was determined by me under my direction and control and that this U.S. Public Land Survey Monument Record is correct and complete to the best of my knowledge and belief.

CORNER CODE: E-3
(A.E. 7.08 REQUIREMENT)

