

Paper weight-110# (minimum)

Black nonfading ink required

U.S. PUBLIC LAND SURVEY MONUMENT RECORD

For Public Land Survey Corners In:
T. 3 N. R. 10 E. 4th P.M.

WI ADMINISTRATIVE CODE A-E 7.08 REQUIREMENT
REV 10/23/2004 USMONREC.DWG

CORNER CODE INDEX

A	1	2	3	4	5	6	7	8	9	10	11	12	13	14	15	16	17	18	19	20	21	22	23	24	25	A
B		6					5					4				3			2				1			B
C																										C
D																										D
E																										E
F																										F
G																										G
H																										H
J																										J
K																										K
L																										L
M																										M
N																										N
O																										O
P																										P
Q																										Q
R																										R
S																										S
T																										T
U																										U
V																										V
W																										W
X																										X
Y																										Y
Z																										Z

MAGNOLIA TWP
ROCK COUNTY WI

IF AVAILABLE
ROCK COUNTY COORDINATES PREFERRED

North _____ Elev. _____

East _____

Hor. Datum _____ Vert. Datum _____

LATITUDE _____ ELLIPS. HT. _____

LONGITUDE _____

NAD83(91) _____ NETWORK ADJ. YR 2010

GPS (X) _____ TRAVERSE (X) X

BASED ON THE FOLLOWING CONTROL:

PLACE MONUMENT SYMBOL AT PROPER LOCATION ON ABOVE INDEX

CORNER MONUMENT

WITNESS MONUMENT

BEARINGS ARE BASED ON: ROCK COUNTY PROJECTION

FIELD BOOK _____ PAGE # _____

OR OBSERVATION SHEET _____

SHEET 1 OF 3

SHOW A PLAN VIEW DRAWING DEPICTING THE CORNER MONUMENT AND SURROUNDING PHYSICAL FEATURES, INCLUDING THE EXCAVATION AREA AND DEPTH.

PLANNING & ZONING COMMITTEE ADOPTED THIS FORM ON 12/2/1982

CORNER CODE A-3

MA502 N 1/4 COR SEC 6

(B) Describe any record evidence, monument evidence, occupational evidence, testimonial evidence or any other material evidence you considered, and whether the monument was found or placed.

- 1833 BRINK & MULLETT (SEP 12) T4N R10E
WEST ON SOUTH SIDE OF SECTION 31 (PG111)
249.48 W. OAK 14
2640.00 SET QUARTER POST BURR OAK 7 N43E 55.44';
BURR OAK 6 N 70W 65.34'
5732.76 INTERSECTED RANGE LINE 924' NORTH OF
CORNER TO SECTIONS 1 & 12. SET POST AT
INTERSECTION FOR CORNER TO TS 3 & 4N R10E.
W. OAK 16 N61E 15.18'; W OAK 18 S8E 75.9'
LAND ROLLING SECOND RATE BURR OAK W. OAK
HICKORY & C HAZLE ?????? SEPT 12TH 1833
- 1859 MAGNOLIA TWP RD REC BK 1 PG 25 WHEREOF AN
ACCURATE SURVEY HAS BEEN MADE WHICH IS AS FOLLOWS
TO WIT. COMMENCING AT THE QUARTER STAKE ON THE
SOUTH LINE DIVIDING SEC 32 OF UNION & SECTION FIVE IN
MAGNOLIA AND RUNNING THENCE WEST ALONG SAID LINE
TO THE SOUTH CENTER QUARTER POST OF SECTION 31 OF
SAID TOWN OF UNION AND SECTION 6 OF MAGNOLIA THE
LINE OF SAID SURVEY TO BE THE CENTER OF SAID HIGHWAY
THENCE WEST ON THE LINE OF SAID SECTION 31 IN THE
TOWN OF UNION AND SECTION SIX OF MAGNOLIA TO THE
WEST LINE OF THE EAST HALF OF THE NW 1/4 OF SECTION
SIX IN THE TOWN OF MAGNOLIA, LINE OF SAID SURVEY TO BE
THE NORTH LINE OF SAID HIGHWAY THENCE WEST ALONG
THE LINE OF SECTION 31 AND SECTION 6 OF THE TOWN OF
MAGNOLIA TO THE WEST SIDE OF SAID SECTION, THE LINE OF
SAID SURVEY TO BE THE CENTER OF SAID HIGHWAY AND THE
SAME IS HEREBY ESTABLISHED FOUR RODS WIDE.
- 1864 LOCKE VOL 1 PG 205 FD EAST BT. 237.60 EAST OF SET LS
20X13X2 1/2 @ N 1/4 COR SEC 6 T3N R10E. 2986.83
FROM S 1/4 COR SEC 31 TO SW COR SEC 31. VAR 6-50
2749.23 TO FD STUMPS OF BT. SET HH 11 1/2XBX5 @ SW
COR SEC 31 & VAR 7-15 2613.93 FROM N 1/4 COR SEC 6
TO FD WHERE CORNER TREE WAS DUG UP @ NE COR SEC 6
N 1/4 COR SEC 6 USED TO SUBDIVIDE SEC 6. VAR 6-42
2166.78 FROM N 1/4 COR TO CENTER OF SEC 6
- 1870 RUGER AUG REMON-82 AUGUST 24 1870 WEST ON
SOUTH LINE OF SE 1/4 SEC 31 ON A VAR 6-45
OFFSET SOUTH 30.03' OFFSET NORTH 10.56' AT
2627.79 INTERSECTED QUARTER LINE 11.88' SOUTH OF
QUARTER CORNER. FOUND OLD STAKE AT
CORNER. ALSO FOUND EAST BEARING TREE AND
WHERE STUMP OF WEST BEARING TREE HAD BEEN
DUG UP. COR VAR 6-55
WEST ON SOUTH LINE OF SW 1/4 SEC 31
ON A VAR 7-17' OFFSET SOUTH 34.98' OFFSET
NORTH 17.82' OFFSET NORTH 15.18' OFFSET
NORTH 8.58' OFFSET NORTH 7.92 AT
2988.48 INTERSECTED WEST BOUNDARY LINE 9.9' SOUTH
OF CORNER FOUND OLD STAKE AT CORNER ALSO
FOUND STUMPS OF BEARING TREES. COR VAR 6-
45
- 1890 BLEEDORN VOL 2 PG 440 MON. USED TO SUBDIVIDE SEC 31.
VAR 5-05 TO N 1/4 COR SEC 31
- 1890 BLEEDORN VOL 2 PG 441 N 1/16 TH OF NE1/4 COR SEC 6 FD
LS SET BY LOCKE. CALLS FOR MON. @ N 1/4 COR SEC 6
CALLS FOR MON AS WEST OF S 1/4 COR SEC 31
- 1968 BATTERMAN VOL 4 PG 364 @ S 1/4 COR SEC 31 FD CUT
STONE ON N SIDE OF RD IN DITCH. REF. SAME.
- 1977 BARNES VOL 5 PG 330 FD 1/4 REBAR. @ S 1/4 COR SEC 31
SET ALUM. & REF SAME. 4.7' NORTH OF NORTH PVMT EDGE.

SEAL

Emboss

Ronald Barnes

NOV 22, 2011

SHEET 1 OF 3

CORNER CODE **A-3**

MA502 N 1/4 COR SEC 6

- 1979 COMBS CSM VOL 9 PG 152 @ S 1/4 COR SEC 31 ALUM MON.
- 1986 COMBS CSM VOL 12 PG 365 @ S 1/4 COR SEC 31 ALUM
- 2001 COMBS CSM VOL 24 PG 264 FROM S 1/4 COR SEC 31 ALUM
2634.14 TO R/R SPIKE @ SE COR SEC 31
- 2009 KARNES #16230 ROCK COUNTY SEC COR. FROM S 1/4 COR
SEC 31 NB9-45E TO SE COR SEC 31
- 2009 COMBS #16201 FD ALUM @ S 1/4 COR SEC 31

@ S 1/4 COR SEC 31 UNION TWP I FD AN ALUM. MON. 4.7' NORTH OF NORTH PVMT EDGE. THE G-1 MON IS UNDER A LOT OF STONES. I DID NOT UNCOVER THE G-1.

NOV 15 DIGGER HOTLINE MARKING INDICATES TELEPHONE CABLE RUNS E/W ABOUT 1-2.5' NORTH OF NORTH PVMT EDGE. THIS CABLE IS TO CLOSE TO DIG WITH BAKCKHOE.

C) Was the corner restored through acceptance of (1) an obliterated evidence location, or, (2) a found perpetuated location?

ORIGINAL GOV. SURVEYOR DID NOT ESTABLISH THE 1/4 LINES BETWEEN MAGNOLIA & UNION TOWNSHIPS.

@ S 1/4 COR SEC 31 ACCEPTED ALUM, WHICH PERPETUATES THE FD CUT LIMESTONE.

ESTABLISHED N 1/4 COR SEC 6 MAGNOLIA TWP ON LINE WITH S 1/4 COR SEC 31 UNION TOWNSHIP AND NW COR SEC 6 MAGNOLIA TWP. AT LOCKE'S RECORD DISTANCE OF 237.60'.

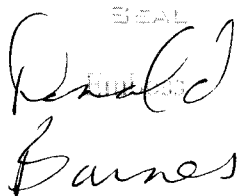
D) Describe any material discrepancy between the location of the corner as restored or reestablished and the location of that corner as previously restored or reestablished by distance and direction. Show the discrepancy on the plan view drawing under (a), above. Show the distances between the corner as previously restored or reestablished and (1) the corner as restored or reestablished, and (2) to at least 4 of the witness monuments shown on the drawing in (a), above.

NONE

(E) Was the corner reestablished through lost corner proportionate methods? If so, show the method, including the directions and distances to other public land survey corners used as evidence or used for proportioning the corner location.

NO

I, Donald Barnes, hereby certify that the corner location as identified by the corner code index was determined by me under my direction and control and that this U.S. Public Land Survey Monument Record is correct and complete to the best of my knowledge and belief.

SEAL


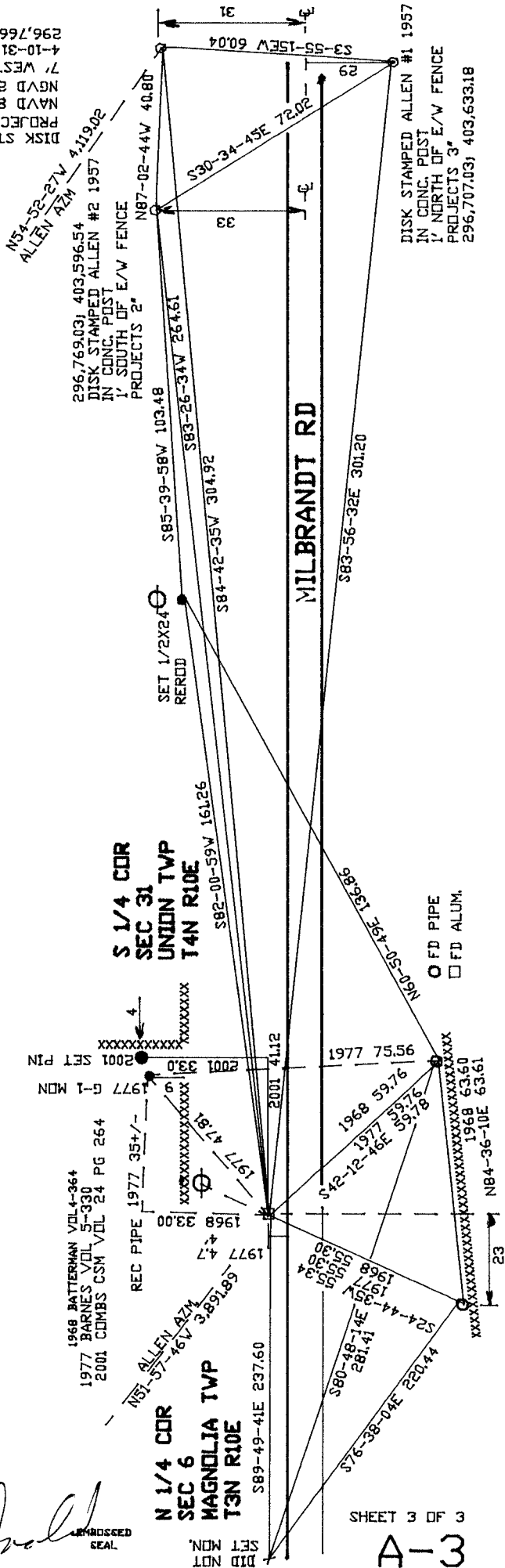
NOV 22, 2011

SHEET 2 OF 3

CORNER CODE **A-3**

A.E. 7.08 REQUIREMENT

NH1382
 DISK STAMPED ALLEN 1957
 PROJECTS 4
 NAVD 88 994
 NGVD 29 923.90
 4-10-31 (33/0)
 7' WEST OF UP
 296,766.93, 403,637.29



1968 BATTERMAN VOL 4-364
 1977 BARNES VOL 5-330
 2001 COMBS CSM VOL 24 PG 264

D. Barnes
 NOV 22, 2011