

# PUBLIC LAND SURVEY MONUMENT RECORD

For Public Land Survey Corners in the

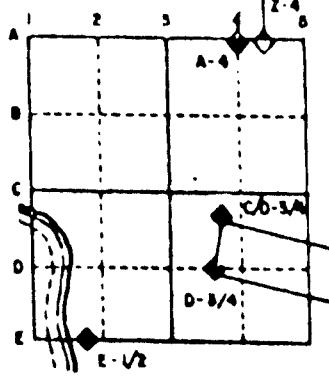
T. 3 N., R. 10 E.

## CORNER CODE INDEX

	1	2	3	4	5	6	7	8	9	10	11	12	13	14	15	16	17	18	19	20	21	22	23	24	25	
A																										
M																										
L	6																									
D		5																								
E			4																							
F				3																						
G					2																					
H																										
J																										
K																										
N																										
O																										
P																										
Q																										
R																										
S																										
T																										
U																										
V																										
W																										
X																										
Y																										
Z																										

PLACE MONUMENT SYMBOL (◆) AT PROPER LOCATION ON ABOVE INDEX

### EXAMPLE



MAGNOLIA TWP  
ROCK COUNTY WI

IF AVAILABLE  
STATE PLANE COORDINATES

North (Y) \_\_\_\_\_ Eleve. (Z) \_\_\_\_\_  
 East (X) \_\_\_\_\_ Zone \_\_\_\_\_  
 Hor. Datum \_\_\_\_\_ Vert. Datum \_\_\_\_\_

◆ CORNER MONUMENT

○ WITNESS MONUMENT

BEARINGS ARE BASED ON:

MA562

(B) Describe any record evidence, monument evidence, occupational evidence, testimonial evidence or any other material evidence you considered, and whether the monument was found or placed.

1855 CHURCH 2680.92 TO S 1/4 COR SEC 7 & 2610.96 TO W 1/4 COR SEC 7.

1873 RUGER VOL 2 PG 109. CORNER S 9.24' NORTH OF E/W BOARD FENCE.

FOUND REMAINS OF OLD STAKE ALSO NE BT THE STUMP OF THE SE BT THE STUMP OF THE SE BT & PUT ON TOP OF IT HH 18X13X11 AND SURROUNDED BY 5 SMALL HARDHEADS. 2677.01 TO N 1/4 COR SEC 18, 1333.2 TO SANDSTONE 12X9X5 ON TOP OF DEEP STAKE AT W 1/16TH COR OF NW 1/4 OF SEC 18, & SE COR OF SEC 13 IS 45.54' NORTH OF W 1/16TH COR OF SEC 7.

1978 BARNES VOL 5 PG 423 DUG & FOUND NOTHING. OCCUPATION IS IN HARMONY WITH RECORD DISTANCE. ACCEPTED IT AS CORNER. SET ALUM. MON.

FOUND ALUM. MON. SET CARSONITE NEXT TO MONUMENT.

C) Was the corner restored through acceptance of (1) an obliterated evidence location, or, (2) a found perpetuated location?

ACCEPTED FOUND ALUM. MON.

D) Describe any material discrepancy between the location of the corner as restored or reestablished and the location of that corner as previously restored or reestablished by distance and direction. Show the discrepancy on the plan view drawing under (a), above. Show the distances between the corner as previously restored or reestablished and (1) the corner as restored or reestablished, and (2) to at least 4 of the witness monuments shown on the drawing in (a), above.

(E) Was the corner reestablished through lost corner proportionate methods? If so, show the method, including the directions and distances to other public land survey corners used as evidence or used for proportioning the corner location.

NO

I, Donald Barnes, hereby certify that the corner points as identified by the corner code index were, in a field survey on, April 24, 1995, established, re-established, monumented, re-monumented, recovered or restored as expressed below and in conformance with the regulations and rules as required in the current manual of survey instructions of the United States Department of Interior, Bureau of Land Management.

*Donald Barnes*  
seal  
*May 4, 1995*

COUNTY SURVEYOR FILING DATA

Date of computer entry \_\_\_\_\_

Date microfilmed \_\_\_\_\_

Number of included sheets \_\_\_\_\_

CORNER CODE

EMBOSS LAND SURVEYOR SEAL

# U.S. PUBLIC LAND SURVEY MONUMENT RECORD

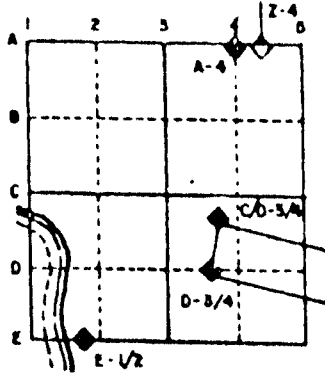
For Public Land Survey Corners in the  
T. 3 N., R. 10 E.

## CORNER CODE INDEX

	1	2	3	4	5	6	7	8	9	10	11	12	13	14	15	16	17	18	19	20	21	22	23	24	25
A																									
B																									
C	6																								
D																									
E																									
F																									
G																									
H	7	8	9	10	11	12	13	14	15	16	17	18	19	20	21	22	23	24	25	26	27	28	29	30	
I																									
J																									
K																									
L	18	17	16	15	14	13	12	11	10	9	8	7	6	5	4	3	2	1							
M																									
N																									
O																									
P	19	20	21	22	23	24	25	26	27	28	29	30													
Q																									
R																									
S																									
T	30	29	28	27	26	25	24	23	22	21	20	19	18	17	16	15	14	13	12	11	10	9	8	7	
U																									
V																									
W																									
X	31	32	33	34	35	36																			
Y																									
Z																									

PLACE MONUMENT SYMBOL (◆) AT PROPER LOCATION ON ABOVE INDEX

### EXAMPLE



MAGNOLIA TWP  
ROCK COUNTY WI

IF AVAILABLE  
STATE PLANE COORDINATES

North (Y) 281,263.62      Elevation (Z) \_\_\_\_\_  
 East (X) 403,039.88      Zone \_\_\_\_\_  
 Hor. Datum \_\_\_\_\_      Vert. Datum \_\_\_\_\_

◆ CORNER MONUMENT

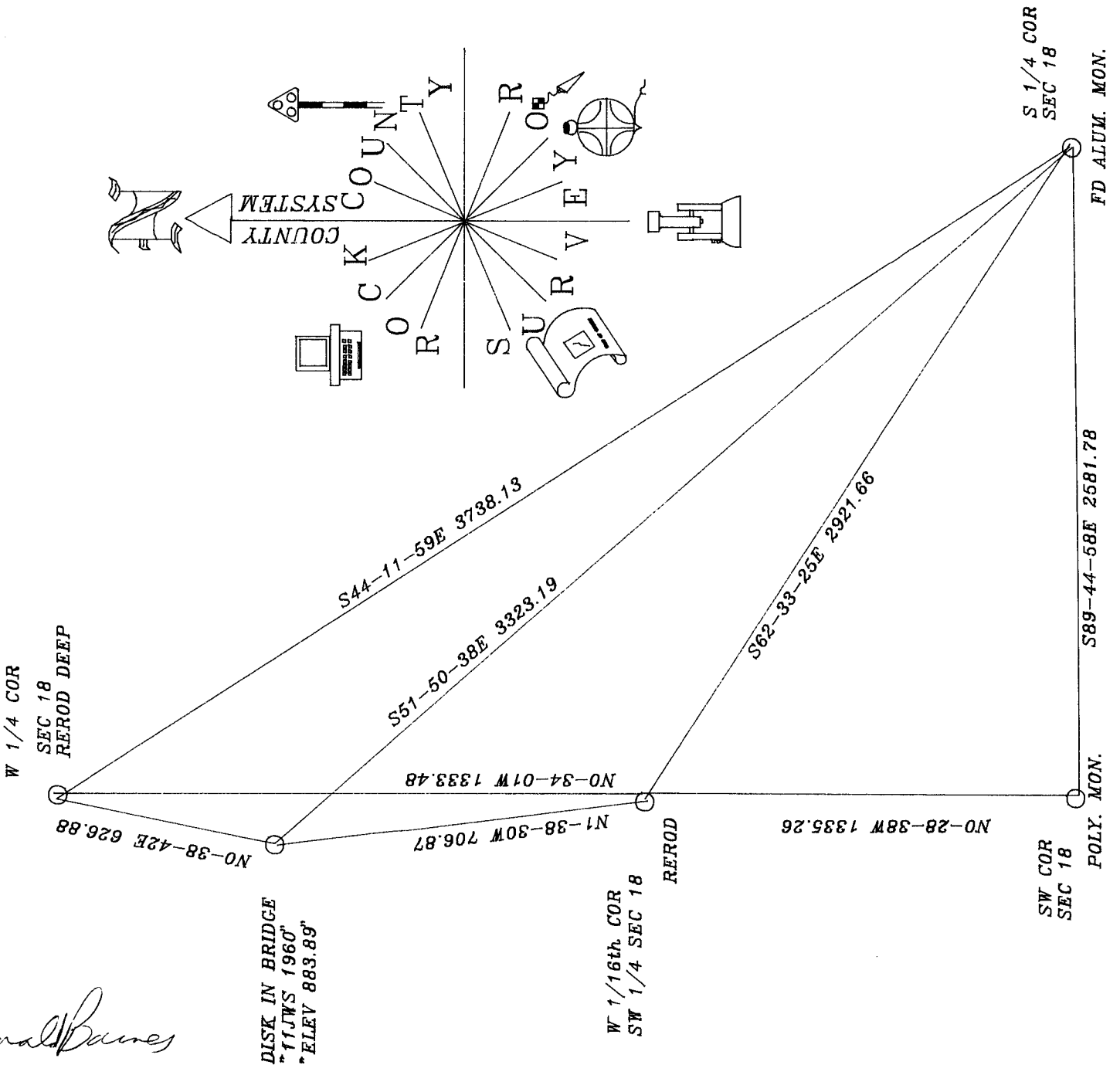
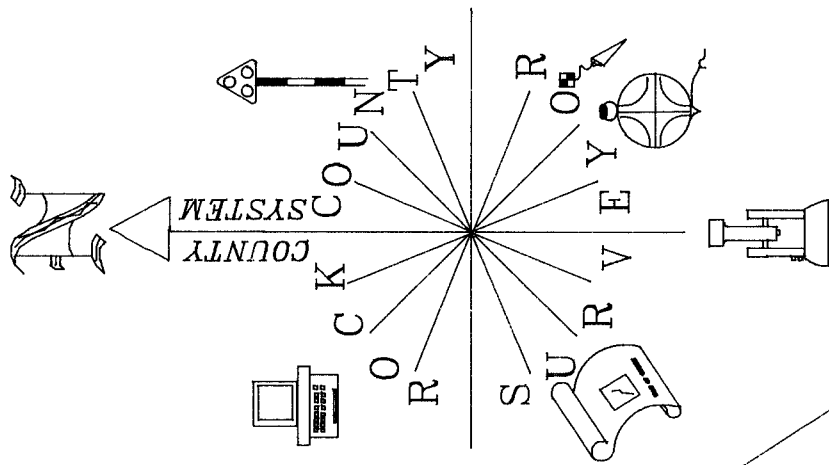
○ WITNESS MONUMENT

COORDINATES ARE BASED ON THE ROCK COUNTY PROJECTION SYSTEM. ESTABLISHED BY CONVENTIONAL TRAVERSE FROM GPS "ALBANY" 304S AND THE AZIMUTH "ALBANY AZIMUTH" 304A WHICH IS IN THE SW 1/4 OF SECTION 7.

BEARINGS ARE BASED ON

SHEET 2 OF 2  
N 3

CORNER CODE:



DISK IN BRIDGE  
 "11JWS 1960"  
 "ELEV 883.89"

W 1/16th COR  
 SW 1/4 SEC 18

Donald Barnes  
 May 4, 1995

N 3