

PUBLIC LAND SURVEY MONUMENT RECORD

For Public Land Survey Corners in the

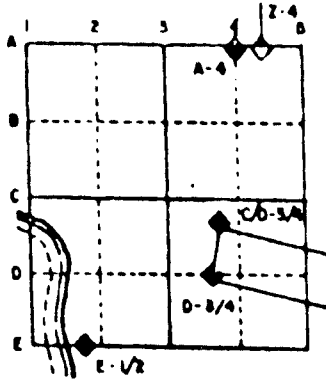
T. 3 N., R. 10 E.

CORNER CODE INDEX

	1	2	3	4	5	6	7	8	9	10	11	12	13	14	15	16	17	18	19	20	21	22	23	24	25
A																									
B																									
C																									
D																									
E																									
F																									
G																									
H																									
I																									
J																									
K																									
L																									
M																									
N																									
O																									
P																									
Q																									
R																									
S																									
T																									
U																									
V																									
W																									
X																									
Y																									
Z																									

PLACE MONUMENT SYMBOL (◆) AT PROPER LOCATION ON ABOVE INDEX

EXAMPLE



MAGNOLIA TWP
ROCK COUNTY WI

IF AVAILABLE
STATE PLANE COORDINATES

North (Y) _____ Eleve. (Z) _____
 East (X) _____ Zone _____
 Hor. Datum _____ Vert. Datum _____

◆ CORNER MONUMENT

○ WITNESS MONUMENT

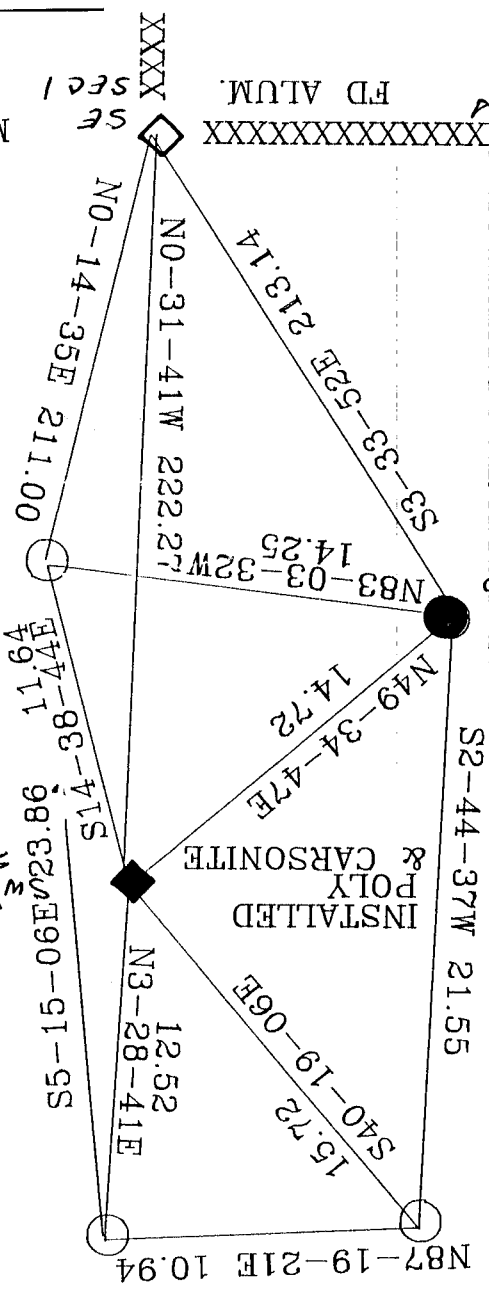
BEARINGS ARE BASED ON:

Donald Barrer
Sept 20, 1994

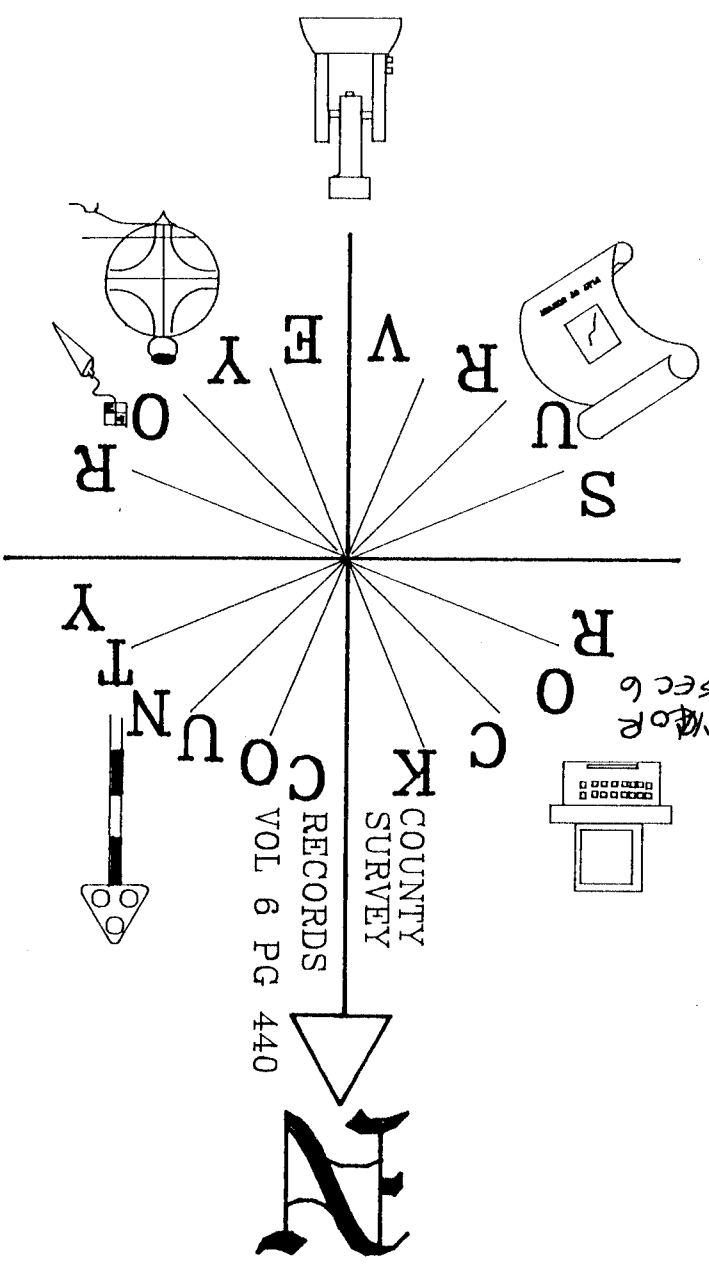
MAGNOLIA TWP FB #4 PG43
3/4X24 REROD

FD ALUM.

XXXX
SE
SEC 1



3/4X24 REROD WITH PLASTIC CAP



FOR
SEC 6

COUNTY SURVEY
RECORDS
VOL 6 PG 440



(B) Describe any record evidence, monument evidence, occupational evidence, testimonial evidence or any other material evidence you considered, and whether the monument was found or placed.

- 1833 SEP 14th ORIGINAL SURVEYOR - FIELD NOTES. NORTH ON EAST SIDE OF SECTION 12 5280' SET POST CORNER SECTIONS 1 & 12 WHITE OAK 16 S7W 101.64', BURR OAK 12N5W 102.3'.
- 1833 DEC 1st ORIGINAL SURVEYOR - FIELD NOTES. 5205.42' INTERSECTED W BDG 222.42' NORTH OF POST. POST & RAISED MOUND.
- 1855 CHURCH VOL 1 PG 47 CALLS FOR 2626.8' TO SE CORNER OF SECTION 1.
- 1876 RUGER VOL 2 PG 218 FOUND SANDSTONE & CALLS FOR 222.42 TO SW CORNER OF SECTION 6 & 2626.8 TO E 1/4 CORNER OF SECTION 12.
- 191? KERCH VOL 3 PG 15 CALLS FOR 222.42 TO SW CORNER OF SECTION 6 CENTER TWP.
- 1980 BARNES VOL 6 PG FOUND STONE OF RECORD. REPLACED WITH ALUM MON.

FOUND ALUM. MONUMENT.

C) Was the corner restored through acceptance of (1) an obliterated evidence location, or, (2) a found perpetuated location?
ACCEPTED FOUND PERPETUATED LOCATION.

D) Describe any material discrepancy between the location of the corner as restored or reestablished and the location of that corner as previously restored or reestablished by distance and direction. Show the discrepancy on the plan view drawing under (a), above. Show the distances between the corner as previously restored or reestablished and (1) the corner as restored or reestablished, and (2) to at least 4 of the witness monuments shown on the drawing in (a), above.

(E) Was the corner reestablished through lost corner proportionate methods? If so, show the method, including the directions and distances to other public land survey corners used as evidence or used for proportioning the corner location.
NO

I, Donald Barnes, hereby certify that the corner points as identified by the corner code index were, in a field survey on, Sep 16, 1994, established, re-established, monumented, re-monumented, recovered or restored as expressed below and in conformance with the regulations and rules as required in the current manual of survey instructions of the United States Department of Interior, Bureau of Land Management.

seal

Donald Barnes
Sep 20, 1994

EMBOSS LAND SURVEYOR SEAL

COUNTY SURVEYOR FILING DATA

Date of computer entry _____

Date microfilmed _____

Number of included sheets _____
CORNER CODE

PLAT AND RECORD

Survey on Section **6** T **3** N. R. **10** E. of the 4 P. M. in **CENTER UNION MAGNOLIA** Township
 County, Wisconsin, made **SEPTEMBER** the **19** th **1994**

I hereby certify that the following is a correct record of said survey as made by me.

County Surveyor.

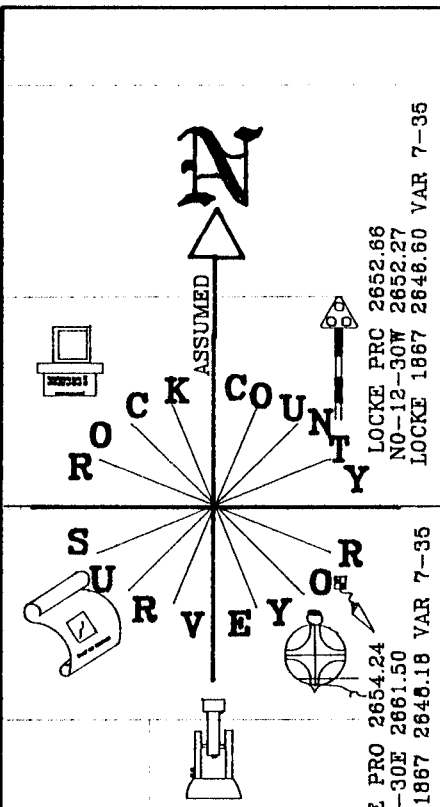
LOCKE PRO 2618.27 S89-47-28E 2619.51 LOCKE 1867 2612.29 VAR 7-00 RUGER 1870 2619.54 VAR 6-39 BARNES 1980 2619.50 ORIG 2602.05	LOCKE PRO 2618.27 S89-46-10E 2618.53 LOCKE 1867 2612.29 VAR 7-00 RUGER 1870 2619.54 VAR 6-39 BARNES 1980 2618.53 ORIG 2602.05	RUGER 1874 16.5 LOCKE 1867 16.5
NO-0456W 2650.48 RUGER 1870 2652.54 VAR 6-58 BARNES 1980 2650.47 ORIG 2640	LOCKE PRO 2652.66 NO-12-30W 2652.27 LOCKE 1867 2648.60 VAR 7-35	LOCKE PRO 2653.98 SO-09-48E 2653.02 LOCKE 1867 2647.92 VAR 7-40 RUGER 1870 2651.88 VAR 7-11 RUGER 1874 2660.79 (W 1/4 - NW SEC 31) SO-10W 2658.33 FD POST SO-29-09W 11.22 RUGER 1874 11.22
SO-11-04E 2655.13 RUGER 1870 2653.2 VAR 6-45 BARNES 1980 2654.94 ORIG 2640	LOCKE PRO 2654.24 SO-12-30E 2661.50 LOCKE 1867 2648.18 VAR 7-35	LOCKE PRO 2656.63 SO-28-25E 2656.84 LOCKE 1867 2650.56 VAR 7-55 RUGER 1870 2652.64 VAR 7-28 RUGER 1874 2660.79 (SW - W 1/4 SEC 31) SO-28-25W 2667.85 NO-N89-11-07E 2604.99 NRUGER 1874 2548.92 VAR 7-25
NO-35-09E 2276.66 BARNES 1980 2276.65 ORIG 2254.58	LOCKE PRO 2626.99 S89-36-51E 2626.51 BARNES 1980 2626.51 RUGER 1870 2626.8 VAR 6-39 LOCKE 1867 2620.99 VAR 6-55	LOCKE PRO 2627.19 RUGER 1870 2625.15 VAR 6-16 LOCKE 1867 2621.19 VAR 6-55 S89-51-41E 2627.19 INSTALLED POLY
INT 1/4 LINES 2661.19 S86-39-16E 2653.11 CHURCH 1855 2647.92 VAR 4 1323.96 CHURCH 1855 1323.96	CHURCH 1855 2491.50 ORIG PLAT 0' ORIG FIELD NOTES 0' NO-01-38E 2413.68 CHURCH 1855 2409.0 VAR 7-45' 1320 CHURCH 1855 1089.0	KERCH 2596.1 BROWN 1900 2614.92 ORIG 2587.20 NO-27-12W 2562.24 ORIG FIELD NOTES 2640 TO TEMP. POST CHURCH 1855 2529.12 ORIG PLAT 2560.8 1320 ORIG PLAT 1240.8 ORIGINAL SHOULD BE 2521.2 (2640-118.8)
SO-14-48E 2656.85 BARNES 1980 2656.81 1925 BARNES 1979 1330	CHURCH 1855 2651.88 INT 1/4 LINES 2648.43 NO-20-20W 2648.94 BARNES 1980 180-00-00 180-0-0	NO-25-22W 2639.17 BROWN 1900 2640 RUGER 1876 2635.05 ORIG PLAT 2640 NO-25-23W 222.42 ORIG PLAT 2560.8 ORIG PLAT 2338.36 222.42 RUGER 1876 2578.29 ORIG 2565.42 BROWN 1900 2588.54 KERCH 2585.5 FD STAKE & BRICKS NO-31-38W 222.27 ORIG PLAT 222.42' KERCH 222.42 ORIG FIELD NOTES 222.42'
FD ALUM. BARNES 1980 2657.12 ORIG 2635.38 S86-52-22E 2656.75	BARNES 1980 2657.13 ORIG 2635.38 S86-52-22E 2656.75	FD ALUM. BARNES 1980 2657.13 ORIG 2635.38 S86-52-22E 2656.75

SEC 36

SEC 31

SEC 1

SEC 6



Barnes
 Sep 20, 1994
 3 of 3