

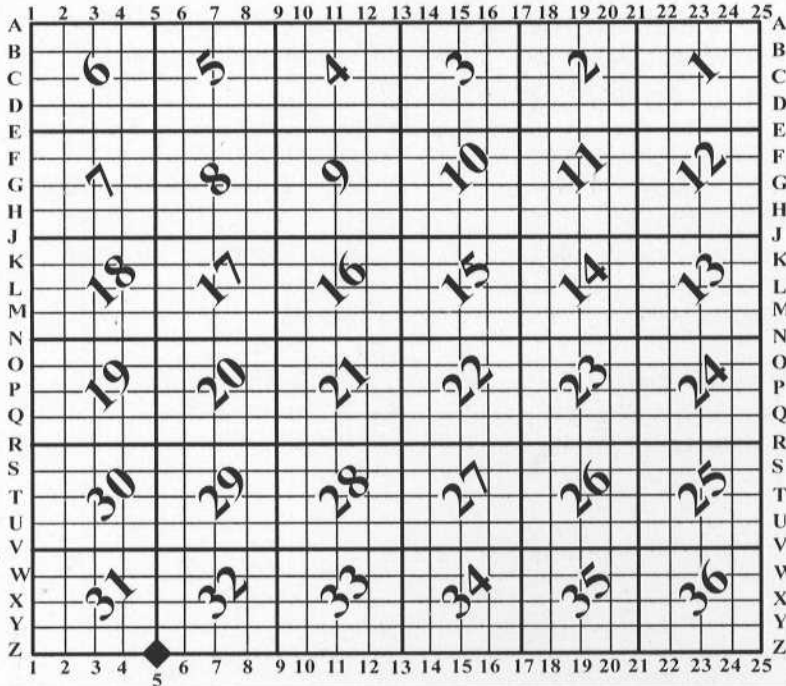
U.S. PUBLIC LAND SURVEY MONUMENT RECORD

For Public Land Survey Corners In: WI ADMINISTRATIVE CODE A-E 7.08 REQUIREMENT

T. 3 N. - R. 10 E. of the 4th P.M.

CORNER CODE INDEX

(PLACE "◆" SYMBOL AT PROPER PLSS CORNER LOCATION)



MAGNOLIA TWP
ROCK COUNTY WI

COORDINATES

(GNSS DERIVED VIA WISCORS)

NORTHING: 265324.33 ELEV: N/A
EASTING: 406153.05

Hor. Datum: WCCS-ROCK, (NA2011)

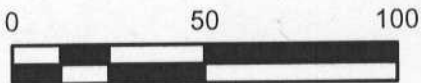
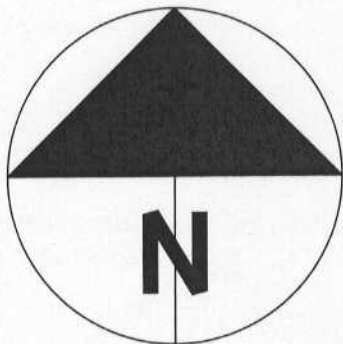
Vertical Datum: NAVD 88, (If applicable)

(a) LEGEND

- - 3/4" x 24" REBAR SET, (RED CAP W/"PLSS WITNESS S-2331")
- - LIMESTONE FOUND

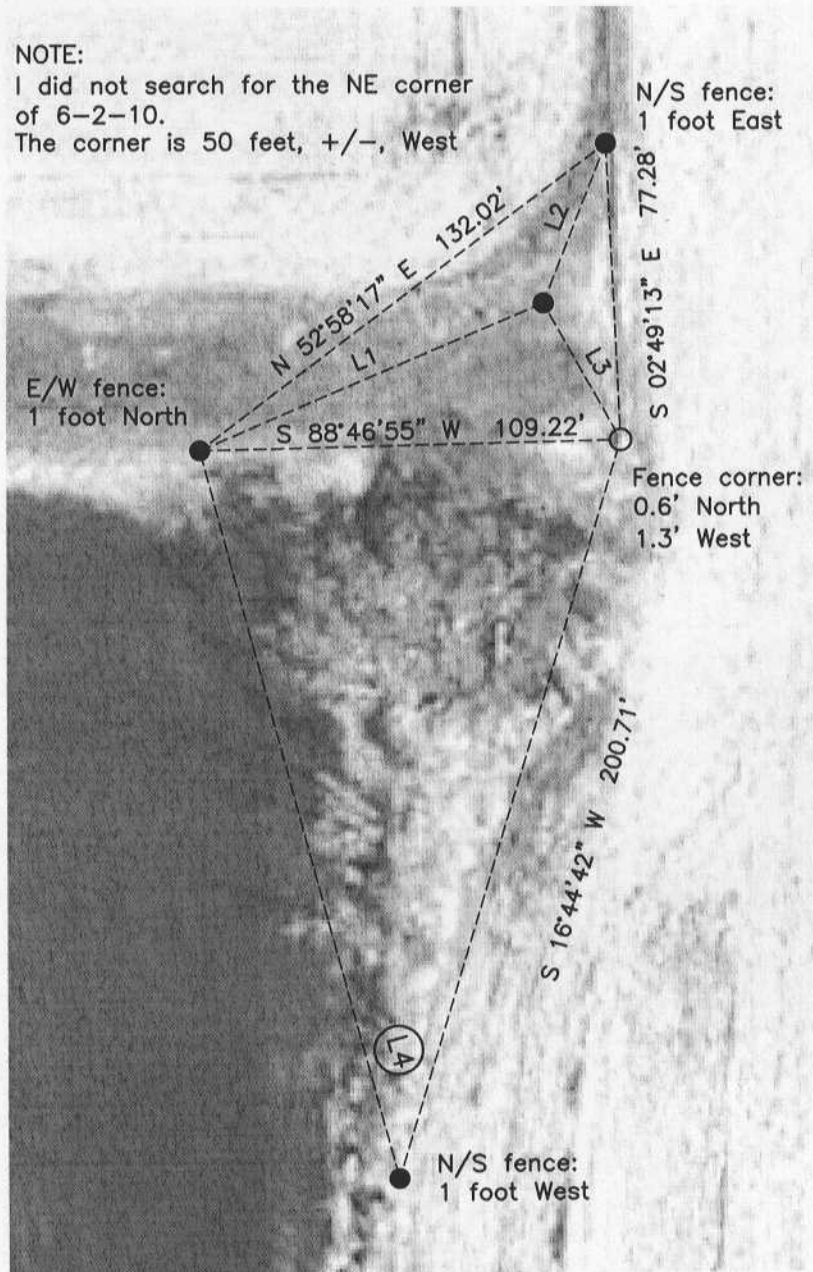
LINE TABLE

LINE	BEARING	DISTANCE
L1	S 66°55'28" W	96.94'
L2	N 21°20'09" E	44.56'
L3	N 29°17'47" W	40.90'
L4	N 15°08'18" W	196.71'



NOTE:

I did not search for the NE corner of 6-2-10. The corner is 50 feet, +/-, West



Field book: Magnolia 2013

Page: 42

Page 1 of 2

Corner code: Z-5

B) Describe any record evidence, monument evidence, occupational evidence, testimonial evidence or any other material evidence you considered, and whether the monument was found or placed.

Subsequent to the original survey, (1833), there has been little activity at this location. Edward Ruger set a limestone in 1882 and no records indicate it being found after that. Ties for this corner were never set.

Prior to visiting the corner I established the West 1/4 of Section 32 and set an aluminum monument as detailed on tie-sheet X-5. I also tied in the NW corner, East 1/4 corner and monuments from a filed Combs survey in the SE quarter, (Sec. 32), that allowed me to rough compute the location of the SW corner.

At this location I found a stone buried roughly 8" that approximates the dimensions given by Ruger. Similar to the West 1/4 corner, I found a roughly 3" +/- diameter steel fence post set in concrete; any guess of age would be just that but, the fencing and the corner fence post certainly demonstrate a long held belief of where this PLSS corner location is situated. I did not find a stone at the computed location however, based on the existence of the fence post and a similar fence post relationship to the West 1/4 corner, I commenced digging. The stone I found is 1.3 feet East and 0.6 feet South of the fence corner and approximately 1 foot from my computed position.

I accepted the location of the found stone as the SW corner; fencing, nearby ditching, years of farming, etc. could certainly have disturbed the area making it impossible to say definitively that the stone is that set by Ruger in its undisturbed location. My rationale for acceptance, (in decreasing order of weight), is as follows:

- 1) Is indeed a limestone as called by Ruger.
- 2) It approximates the size given by Ruger
- 3) Is within proximity of the fence corner noted.
- 4) It is within 1.5 feet of the computed location.

Two pinl magnets were placed on the Easterly edge of the stone, I left the top of the stone exposed and set an orange carsonite post within inches of the same.

C) Was the corner restored through acceptance of (1) an obliterated evidence location, or, (2) a found perpetuated location?

A found perpetuated location.

D) Describe any material discrepancy between the location of the corner as restored or reestablished and the location of that corner as previously restored or reestablished by distance and direction. Show the discrepancy on the plan view drawing under (a), above. Show the distances between the corner as previously restored or reestablished and (1) the corner as restored or reestablished, and (2) to at least 4 of the witness monuments shown on the drawing in (a), above.

I did not find a discrepancy between the corner restored and a previously documented corner location. I do not consider my distances vs. Ruger's 1882 distances to be in conflict given the differences in distance measuring techniques.

(E) Was the corner reestablished through lost corner proportionate methods? If so, show the method, including the directions and distances to other public land survey corners used as evidence or used for proportioning the corner location.

N/A

I, **Jason R. Houle**, hereby certify that the corner location as identified by the corner code index was determined by me under my direction and control and that this U.S. Public Land Survey Monument Record is correct and complete to the best of my knowledge and belief.

CORNER CODE: Z-5
(A.E. 7.08 REQUIREMENT)

