

U.S. PUBLIC LAND SURVEY MONUMENT RECORD

For Public Land Survey Corners In: WI ADMINISTRATIVE CODE A-E 7.08 REQUIREMENT

T. 3 N. - R. 10 E. of the 4th P.M.

CORNER CODE INDEX

(PLACE "◆" SYMBOL AT PROPER PLSS CORNER LOCATION)

A	2	3	4	5	6	7	8	9	10	11	12	13	14	15	16	17	18	19	20	21	22	23	24	25	A
B																									B
C	6																								C
D		5																							D
E			4																						E
F				3																					F
G					2																				G
H						1																			H
I																									I
J																									J
K																									K
L	18																								L
M		17																							M
N			16																						N
O				15																					O
P					14																				P
Q						13																			Q
R							12																		R
S								11																	S
T									10																T
U										9															U
V											8														V
W												7													W
X													6												X
Y														5											Y
Z															4										Z
	1	2	3	4	5	6	7	8	9	10	11	12	13	14	15	16	17	18	19	20	21	22	23	24	25

MAGNOLIA TWP
ROCK COUNTY WI

COORDINATES

(GNSS DERIVED VIA WISCORS)

NORTHING: 267964.22 ELEV: N/A

EASTING: 406040.97

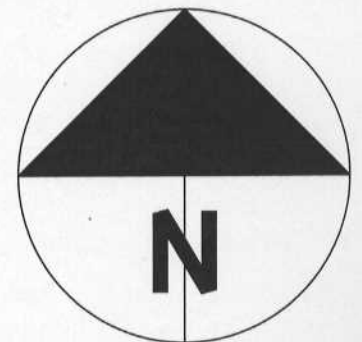
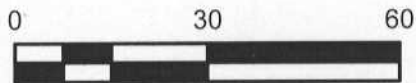
Hor. Datum: WCCS-ROCK, (NA2011)

Vertical Datum: NAVD 88, (If applicable)

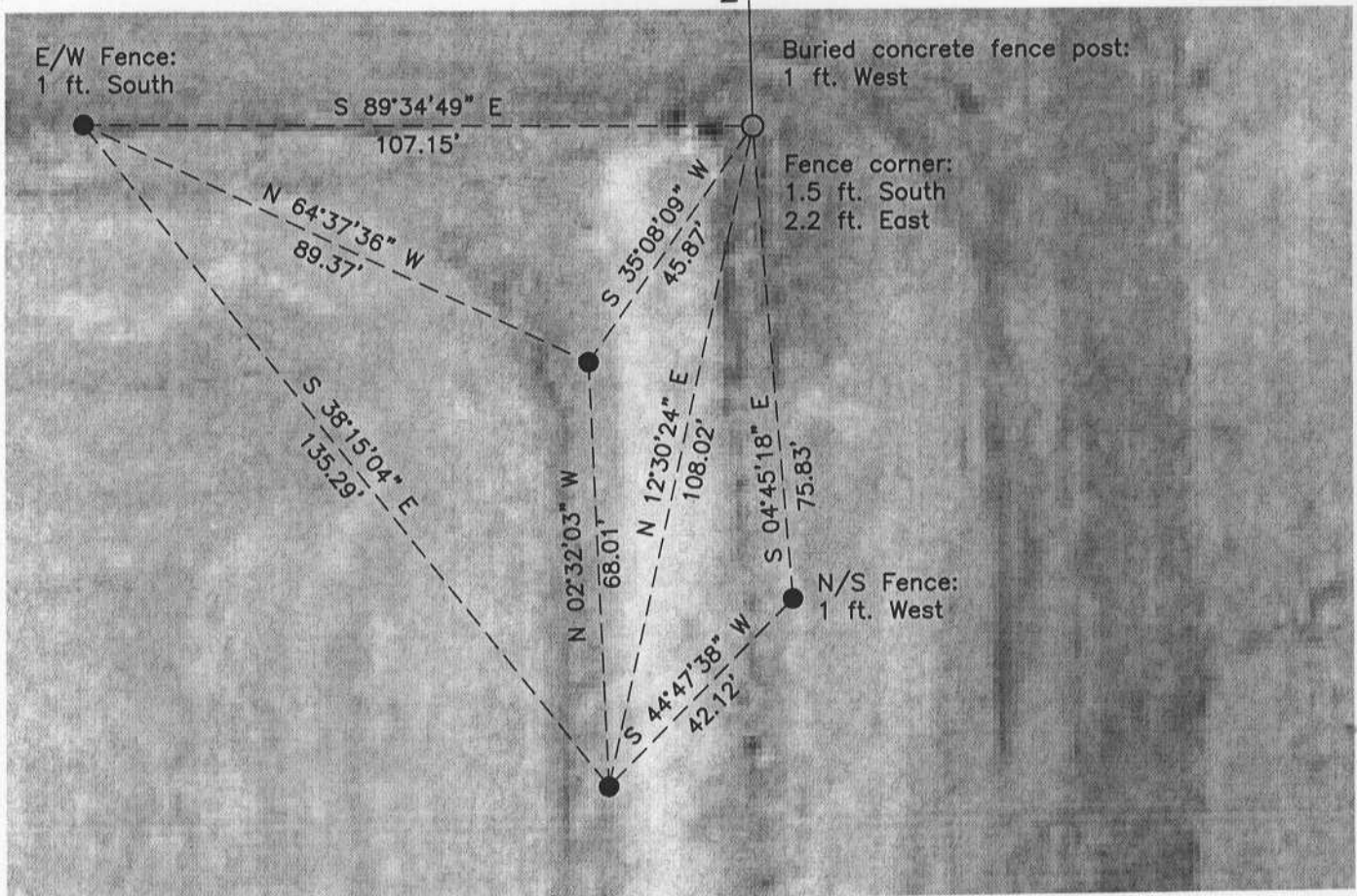
(a) LEGEND

- - 3/4" x 24" REBAR SET, (RED CAP W/"PLSS WITNESS S-2331")
- - ALUMINUM MONUMENT SET
- ⊙ - COTTON GIN SPINDLE FOUND

NW Corner
32-3-10



N 01°48'33" W
2670.50'
(2670.60')



B) Describe any record evidence, monument evidence, occupational evidence, testimonial evidence or any other material evidence you considered, and whether the monument was found or placed.

Subsequent to the original survey, (1833), there has been little activity at this location. Edward Ruger set a stone, (Stone; not noted as a limestone as others in the section are), in 1882 and the same was stated as found in 1960 by R.H. Batterman Jr., (RHB). Ties for this corner were never set.

Prior to visiting the corner I re-established the NW corner of Section 32 from a 1985 Barnes tie-sheet. RHB noted a distance from the Northwest corner to the West ¼, (stone found), of 2670.60 feet. Based on the RHB distance and other surveying activity in the section, I computed the corner location as a starting point for searching. The NW corner, East ¼ corner and monuments from a Combs survey in the SE quarter provided enough data to rough out the section.

At the West-quarter location I discovered several stones, (surface and buried), a new fence corner and an old concrete fence corner with the 3" +/- diameter steel fence corner snapped off. The concrete corner has a roughly 12"x12" base with 3" +/- of concrete extending from it that once anchored the steel post. At the computed location I found a stone that matched the RHB distance; I also found a stone that matched the RHB distance roughly one foot east of the old concrete corner. I do not believe either stone was the one set by Ruger; during discussions with the landowner, it was stated that this area was a common location for field stones to be thrown. Also, running south from this location for ½ mile is an excavated drainage ditch. Based on the ditch location, I believe the existing N/S fence, (fence corner 3' +/- east of the old and buried concrete corner), was placed after the ditch work was complete. It is difficult to determine what the limits of undisturbed ground are versus excavated ground and spoils from the same. I cannot definitively say that none of the stones found aren't that set by Ruger however, in my opinion the likelihood is doubtful given the existing physical features and statement of the landowner.

I believe, (1) given the existence of old and new corner fence posts, (2) RHB's distance from the NW corner and (3) proximity to my computed location, that the search area closely approximates both the original PLSS corner and Ruger's stone locations. Given that and after much digging, I set an aluminum monument near the easterly edge of the concrete fence post base and one foot east of what once was the corner fence post. Doing a single proportionate distance between the SW and NW corners of this section would push the W1/4 corner 14 foot east; both away from long established occupation and into a tilled area. I consider all I found to be the best available evidence of the original PLSS corner location. The aluminum monument was tied off with 4 witnesses per the map.

C) Was the corner restored through acceptance of (1) an obliterated evidence location, or, (2) a found perpetuated location?

An obliterated evidence location.

D) Describe any material discrepancy between the location of the corner as restored or reestablished and the location of that corner as previously restored or reestablished by distance and direction. Show the discrepancy on the plan view drawing under (a), above. Show the distances between the corner as previously restored or reestablished and (1) the corner as restored or reestablished, and (2) to at least 4 of the witness monuments shown on the drawing in (a), above.

I did not find a discrepancy between the corner restored and a previously documented corner location. I do not consider my distances vs. Ruger's 1882 distances to be in conflict given the differences in distance measuring techniques.

(E) Was the corner reestablished through lost corner proportionate methods? If so, show the method, including the directions and distances to other public land survey corners used as evidence or used for proportioning the corner location.

N/A

I, **Jason R. Houle**, hereby certify that the corner location as identified by the corner code index was determined by me under my direction and control and that this U.S. Public Land Survey Monument is correct and complete to the best of my knowledge and belief.

CORNER CODE: X-5
(A.E. 7.08 REQUIREMENT)

