

Paper weight-110# (minimum)

Black nonfading ink required

# U.S. PUBLIC LAND SURVEY MONUMENT RECORD

For Public Land Survey Corners In:

WI ADMINISTRATIVE CODE A-E 7.08 REQUIREMENT

T. 3 N. R. 10 E. 4th P.M.

REV 10/23/2004

USMONREC.DWG

CORNER CODE INDEX

	1	2	3	4	5	6	7	8	9	10	11	12	13	14	15	16	17	18	19	20	21	22	23	24	25
A																									
B																									
C																									
D																									
E																									
F																									
G																									
H																									
J																									
K																									
L																									
M																									
N																									
O																									
P																									
Q																									
R																									
S																									
T																									
U																									
V																									
W																									
X																									
Y																									
Z																									

MAGNOLIA TWP  
**ROCK COUNTY WI**

IF AVAILABLE  
ROCK COUNTY COORDINATES PREFERRED

North \_\_\_\_\_ Elev. \_\_\_\_\_

East \_\_\_\_\_

Hor. Datum \_\_\_\_\_ Vert. Datum \_\_\_\_\_

LATITUDE \_\_\_\_\_ ELLIPS. HT. \_\_\_\_\_

LONGITUDE \_\_\_\_\_

NAD83(91) \_\_\_\_\_ NETWORK ADJ. YR \_\_\_\_\_

GPS (X) \_\_\_\_\_ TRAVERSE (X) \_\_\_\_\_

BASED ON THE FOLLOWING CONTROL:

PLACE MONUMENT SYMBOL **◆** AT PROPER LOCATION ON ABOVE INDEX

**◆** CORNER MONUMENT

**○** WITNESS MONUMENT

BEARINGS ARE BASED ON: ROCK COUNTY PROJECTION

FIELD BOOK \_\_\_\_\_ PAGE # \_\_\_\_\_  
OR OBSERVATION SHEET \_\_\_\_\_

SHEET 1 OF 4

SHOW A PLAN VIEW DRAWING DEPICTING THE CORNER MONUMENT AND SURROUNDING PHYSICAL FEATURES, INCLUDING THE EXCAVATION AREA AND DEPTH.

PLANNING & ZONING COMMITTEE ADOPTED THIS FORM ON 12/2/1982

CORNER CODE N-5

MA563 SECORSEC18T3NR10E

(B) Describe any record evidence, monument evidence, occupational evidence, testimonial evidence or any other material evidence you considered, and whether the monument was found or placed.

- 1833 HARRISON DEC 6TH NORTH BET SECS 19 & 20  
2640.00 QUARTER SEC COR {BURR O 12" S43? 580.8';  
BURR O 18" N87W 31.02' BURR O 12" & BURR O  
18"} MARKED  
5280.00 COR TO SEC 17,18,19,20  
{BURR O 12" N31W 46.86'; BURR O 14" N45E  
39.60'; BURR O 10" S62E 27.72'; BURR O 14"  
S78W 112.86'  
LAND ROLLING 2ND RATE TIMBER BURR &  
WHITE OAK UNDERGROWTH GRASS & WEEDS  
(RAIN & SNOW)
- 1833 HARRISON DEC 7 WEST BET SECS 18 & 19  
1848.0 ENTER WET PRAIRIE  
2640 LEAVE IT & SET 1/4 SEC COR {BURR O 18" N53W  
157.08'; BURR O 10" N9W 254.76' BURR O 18" &  
BURR O 10"} MARKED  
3344.22 BURR O 18" DIAM  
5364.48 INT. W. BDY 1141.14' NORTH OF COR {BURR O 18"  
S29E 76.56'; BURR O 14" N18E 62.04'  
LAND LEVEL & SOMEWHAT WET 2ND RATE  
TIMBER ALL BURR OAK
- 1833 HARRISON DEC 6 EAST ON RAND BET 17 & 20  
2640.00 TEMPY 1/4 SEC COR  
5313.00 INT E BDY 9.9' SOUTH OF POST  
LAND ROLLING 2ND RATE TIMBER BURR & WHITE  
OAK UNDERGROWTH ?? GRASS & WEEDS LAND ??  
SAME  
WEST COR WEST SEC 17 & 20  
2656.50 QUARTER SEC COR. {BURR O 12" N10E 6.6';  
BURR O 12" S40W 44.22' BURR O 12" & BURR O  
12"} MARKED  
4561.26 BURR OAK 12 IN DIAM  
5313.00 INT SEC COR
- 1833 HARRISON DEC 6 NORTH BET SECS 17 & 18  
858.0 ENTER MARSH  
1980.00 LEFT SAME  
2640.00 QUARTER SEC COR. {BURR O 10" N21W 31.02';  
BURR O 12" S68W 22.44' BURR O 20 & BURR O  
12"} MARKED  
5280.00 COR TO SECS 7,8,17,18 {BURR O 12" S82W  
19.14'; BURR O 12" N57W 99'; BURR O 14" N83E  
81.81'; BURR O 12" S9E 23.76' LAND BROKEN  
2ND RATE MOSTLY TIMBER OF BURR & WHITE OAK  
UNDERGROWTH ?? GRASS & WEEDS DEC 6TH  
1833
- 1855 CHURCH VOL 1 PG55 STATES NOTHING ABOUT MON,  
VARIATION N82 -1/2E 2640.00 TO S 1/4 COR SEC 18,  
2650.56 TO NO BEARING TREES MADE COR WIT TO CORNER  
BR O 18" N18 1/2W 45.54'; STONE SCHOOL HOUSE NW COR  
S20 1/2E 95.70' @ E 1/4 COR SEC 18, 5301.12 TO NE COR  
SEC 18
- 1870 RUGER VOL 2 PG 28 FD STUMPS OF BOTH BEARING TREES &  
REMAINS OF OLD STAKE-WEST BEARING TREE IS 50.82'  
DISTANT INSTEAD OF 46.86'-SET IRREGULAR HH POINTED  
HARD HEAD STONE 24X15X9, VAR 7-03 1326.10 TO SET  
IRREGULAR POINTED HH STONE 22X12X9 POINT UP @ W  
1/16TH COR OF SW 1/4 SEC 17, VAR 7-03 2652.21 TO

*Donald P. ...*  
Sep 20, 2012

SHEET 1 OF 4

CORNER CODE N-5

MA563 SECORSEC18T3NR10E

- CORNER LOST AND BEARING TREES DESTROYED IN WORKING RD - ESTABLISHED QUARTER COR FROM SEC CORNERS-THEN MEASURED OFF & FD REMAINS OF STUMP ONE BEARING TREE-SET IRREGULAR POINTED SANDSTONE 32X15X3 POINT UP @ W 1/4 COR SEC 17. VAR 5304.42 TO FD BOTH BEARING TREES REMAINS OF OLD STAKE-SET IRREGULAR POINTED LS 20X17X5 POINT UP @ NW COR SEC 17.
- 1870 RUGER VOL 2 PG 31 FOR CORNERS ON NORTH LINE SEC 20 SEE PAGE 21 (P28 THIS BOOK RHB) VAR 7-01 2706.66 TO N 1/4 COR SEC 20
- 1944 SUNNY #2762 USED TO SUBDIVIDE SW 1/4 SEC 17. STATES NOTHING ABOUT MON. CALLS FOR FINDING SANDSTONE @ S 1/16TH COR OF SW 1/4 SEC 17
- 1978 BARNES VOL 5 PG 413 DUG 6X5 HOLE 3' DEEP & FD NOTHING. SET ON LINE WITH THE N 1/4 COR & THE N 1/16TH CORNER OF THE NW 1/4 OF SECTION 20 AT SINGLE PROPORTIONATE DISTANCE. CONCRETE IS 0.5' DEEP AT CORNER. REFERENCED SAME. ON NORTH EDGE OF CONCRETE CULVERT. DUG HOLE SOUTH OF CULVERT & ON LINE WITH E/W FENCE TO THE WEST. DRAWING SHOWS MON CLOSE TO E/W FENCE LINE TO THE EAST.
- 1978 BARNES VOL 5 PG 423 2659.19 TO ALUM MON @ N 1/4 COR SEC 19, 2664.94 TO E 1/4 COR SEC 19, 1355.57 EASTERLY TO 1/16TH COR, & 2711.14 TO N 1/4 COR SEC 20
- 1985 BARNES VOL 6 PG 343 SHOWS RECORD DISTANCES. N1-08-48W 2657.17 TO W 1/4 COR SEC 17. SET PK FROM TIES.
- 1985 BARNES L-5 N1-08-48E 2652.21 TO W 1/4 COR SEC 17
- 1986 BARNES VOL 6 PG 362 SHOWS RECORD DISTANCES.
- 1995 BARNES VOL 6 PG 443 SHOWS RECORD DISTANCES
- 2009 COMBS GSM VOL 33 PG 248 SET PK S0-29-30E 2664.94 TO ALUM @ E 1/4 COR SEC 19 & S89-57-48W 2659.14 TO ALUM @ N 1/4 COR SEC 19

FD PK AS SET BY COMBS IN 2009, NW REFERENCE PIPE, SE & SW REFERENCE PK. NE, SE, SW REFERENCE MONUMENTS ARE GONE.

C) Was the corner restored through acceptance of (1) an obliterated evidence location, or, (2) a found perpetuated location?

SET ALUM SURVEY SPIKE AT INTERSECTION OF 2 FD REFERENCE PKS, WHICH WAS IN HARMONY WITH FD NW REFERENCE PIPE.

D) Describe any material discrepancy between the location of the corner as restored or reestablished and the location of that corner as previously restored or reestablished by distance and direction. Show the discrepancy on the plan view drawing under (a), above. Show the distances between the corner as previously restored or reestablished and (1) the corner as restored or reestablished, and (2) to at least 4 of the witness monuments shown on the drawing in (a), above.

FD PK DID NOT CHECK WITH FD PIPE AND 2 REFERENCE PKs.  
COMBS DID NOT STATE HOW HE ESTABLISHED THE LOCATION FOR HIS PK.

(E) Was the corner reestablished through lost corner proportionate methods? If so, show the method, including the directions and distances to other public land survey corners used as evidence or used for proportioning the corner location.

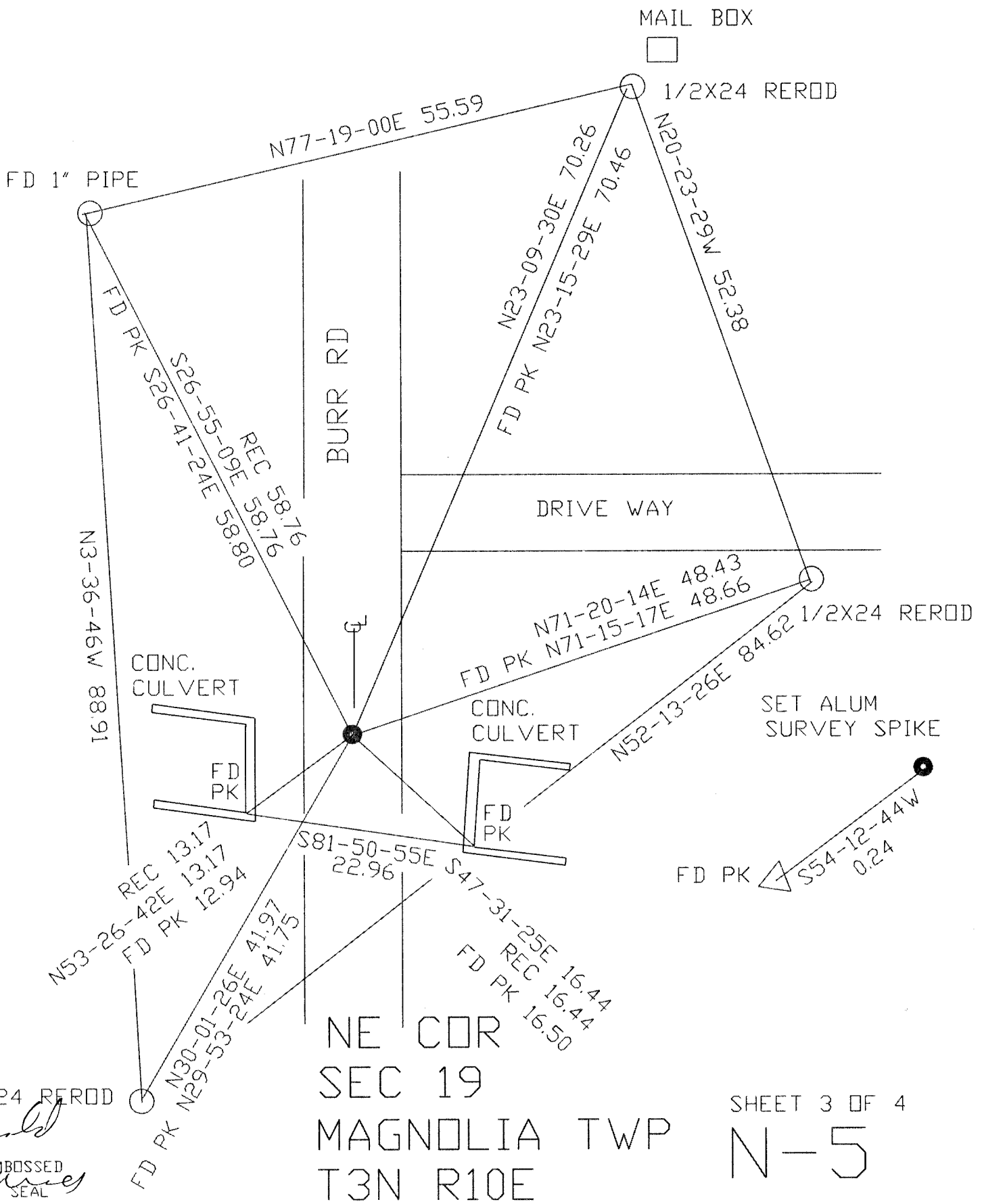
I, **Donald Barnes**, hereby certify that the corner location as identified by the corner code index was determined by me under my direction and control and that this U.S. Public Land Survey Monument Record is correct and complete to the best of my knowledge and belief.

SHEET 2 OF 4

*Donald Barnes*  
Sep 20, 2012

CORNER CODE **N-5**

A.E. 7.08 REQUIREMENT



1/2X24 REROD

*Paul Pursey*  
 EMBOSSED SEAL  
 Sep 20, 2012

SHEET 3 OF 4

N-5

Donald Barnes  
Sep 20, 2012

1833 HARRISON FN 2724.48  
1873 RUGER VAR6-18 2589.35  
1978 BARNES 6-443 2581.96  
1995 BARNES NE S89-44-58E 2581.78

1833 HARRISON 5364.48  
1978 BARNES 5241.10

1855 CHURCH 1-55 VAR N82-30E  
1833 HARRISON 2640

1855 CHURCH 1-55 2640.00  
1978 BARNES 6-443 2659.14  
2009 COMBS CSM33-248 N89-57-48E 2659.14  
2009 LATHROP N-3 N89-57-48E 2659.14  
N89-52-59E 2659.74

N0-36-12E 2657.13  
1985 BARNES N1-08-48E 2657.17  
1870 RUGER 2652.21  
1833 HARRISON 2640.00

1833 HARRISON 2640.00  
1978 BARNES 5-423 2664.94  
2009 LATHROP N-3 NO-29-30W 2664.94

2009 COMBS CSM33-248 NO-29-30W 2664.94  
S0-33-17E 2665.14  
1986 BARNES 6-362 NO-07-42E 2660.18  
2011 BARNES 6-479 NO-48-03W 2660.18

1995 TALARCZYK CSM8-163 5242.64

1/4 COR

1833 HARRISON 5280  
2012 5315.3

1855 CHURCH 1-55 2650.56  
1870 RUGER 2-28 VAR7-03 2652.21  
1978 BARNES 5-423 2659.14  
1978 BARNES 5-423 2652.21  
2009 LATHROP N-3 NO-29-30W 2664.94

1355.57 BARNES 1978 1355.57

1349.12 1870 RUGER 1349.12

SEC COR  
1833 HARRISON 2656.50  
1870 RUGER 2706.66  
1978 BARNES 6-362 2711.14

SEC COR

1978 BARNES 5-423 1329.87  
S0-49-58E 1330.06

40FA  
N-5