

# U.S. PUBLIC LAND SURVEY MONUMENT RECORD

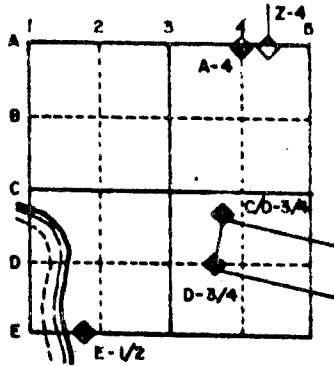
For Public Land Survey Corners in the  
T. 2 N., R. 11 E.

## CORNER CODE INDEX

	1	2	3	4	5	6	7	8	9	10	11	12	13	14	15	16	17	18	19	20	21	22	23	24	25
A																									
B																									
C	6																								
D		5																							
E			4																						
F				3																					
G					2																				
H																									
I																									
J	7																								
K		8																							
L			9																						
M				10																					
N					11																				
O						12																			
P							13																		
Q								14																	
R									15																
S										16															
T											17														
U												18													
V													19												
W														20											
X															21										
Y																22									
Z																	23								
																		24							
																			25						
																				26					
																					27				
																						28			
																							29		
																								30	
																									31
																									32
																									33
																									34
																									35
																									36

PLACE MONUMENT SYMBOL (◆) AT PROPER LOCATION ON ABOVE INDEX

### EXAMPLE

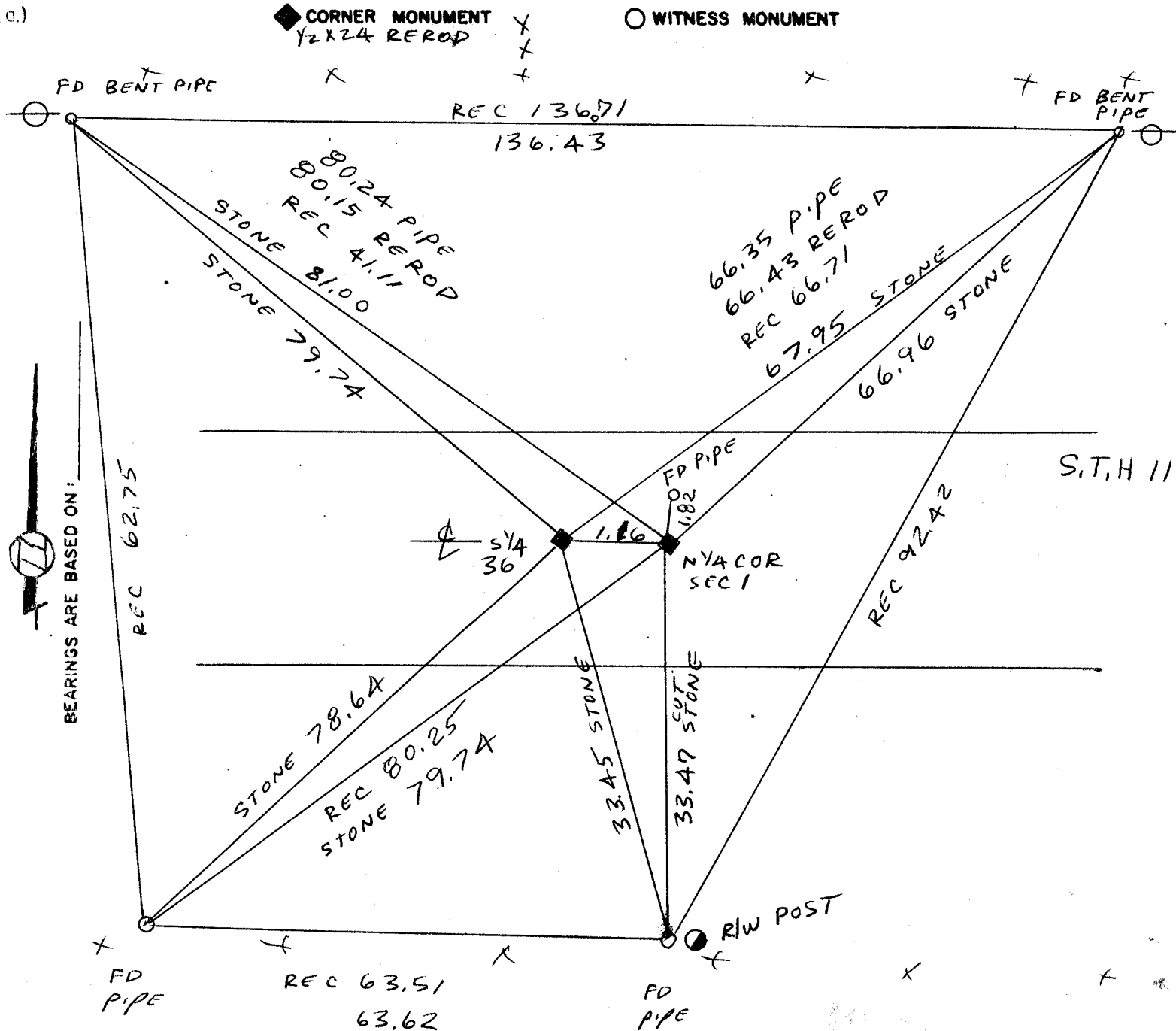


PLYMOUTH TWP  
ROCK COUNTY WI

### IF AVAILABLE STATE PLANE COORDINATES

North (Y) 246,125.44 Eleve. (Z) \_\_\_\_\_  
 East (X) 2,231,252.99 Zone \_\_\_\_\_  
 Hor. Datum \_\_\_\_\_ Vert. Datum \_\_\_\_\_

USING DOT CONTROL



FIELDBOOK # 2 PG 77  
# 3 PG 2,7

SHEET \_\_\_\_\_ OF \_\_\_\_\_

CORNER CODE: A 23

(b) Describe any record evidence, monument evidence, occupational evidence, testimonial evidence or any other material evidence you considered, and whether the monument was found or placed.

1866 LOCKE REMONUMENTATION FIELD NOTES. CORNER IS 1.32' EAST OF THE SOUTH QUARTER CORNER OF SECTION 36. PLACED CUT LIMESTONE. AT THE SOUTH QUARTER CORNER OF SECTION 36, FOUND LARGE LIMESTONE IN CENTER OF HIGHWAY AND IN LINE OF N AND S FENCES.

1933 SUNNY VOL 3 PG 234 SET 1" X 36" PIPE IN CONCRETE PAVEMENT. 1.4' NORTH OF CENTER OF CONCRETE PAVEMENT IN LINE WITH S. FENCE. SHOWS A DISTANCE OF 2644.7 TO THE FENCE INTERSECTION AT THE CENTER OF SECTION 1. SHOWS THE MONUMENT 1.32' EAST OF THE SOUTH QUARTER CORNER OF SECTION 36.

1970 BATTERMAN JR. VOL 4 PG SHOWS A 3/4" PIN WITH REFERENCE MONUMENTS. DOES NOT STATE ANYTHING ABOUT CORNER.

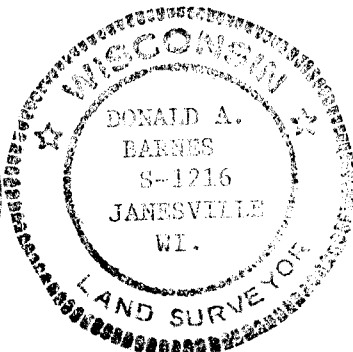
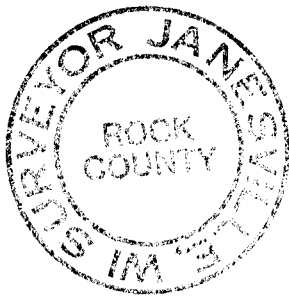
FOUND 3/4" REEROD AND 4" DEEP FOUND PIPE IN CONCRETE PAVEMENT. 5'3" DEEP FOUND CUT LIMESTONE. BROKE TOP 25" OF STONE. MEASURED TO BOTTOM AND THEN PUT TOP BACK ON. PLACED BENT PIPE HORIZONTALLY BY THE STONE. FOUND 15" X 6" X 2 1/2" LIMESTONE 1.26' TO THE WEST STONE IS 1.82 SOUTH OF THE PIPE. STONE IS AT THE CENTER OF THE PAVEMENT. IT APPEARS FROM THE EXCAVATION THAT SUNNY NEVER DUG FOR THE CORNER.

C Was the corner restored through acceptance of (1) an obliterated evidence location, or, (2) a found perpetuated location?

Accepted found cut limestone.

(d) Describe any material discrepancy between the location of the corner as restored or reestablished and the location of that corner as previously restored or reestablished by distance and direction. show the discrepancy on the plan view drawing under (a), above. Show the distances between the corner as previously restored or reestablished and (1) the corner as restored or reestablished, and (2) to at least 4 of the witness monuments shown on the drawing in (a), above.

SEE MAP FOR DISCREPANCY.



*Donald Barnes*  
OCT 18 1988