

U.S. PUBLIC LAND SURVEY MONUMENT RECORD

For Public Land Survey Corners in:

WI ADMINISTRATIVE CODE A-E 7.08 REQUIREMENT

T. 2 N., R. 11 E

CORNER CODE INDEX

A	1	2	3	4	5	6	7	8	9	10	11	12	13	14	15	16	17	18	19	20	21	22	23	24	25
B																									
C	6					5					4				3					2				1	
D																									
E																									
F																									
G	1					8									10					11				12	
H																									
J																									
K																									
L	18					17									15					14				13	
M																									
N																									
O																									
P	19					20									22					23				24	
Q																									
R																									
S																									
T	30					29									27					26				25	
U																									
V																									
W																									
X	31					32									34					35				36	
Y																									
Z																									

PLYMOUTH TWP

ROCK COUNTY WI

IF AVAILABLE
ROCK COUNTY COORDINATES PREFERRED

North _____ Elev. _____

East _____

Hor. Datum _____ Vert. Datum _____

LATITUDE _____ ELLIPS. HT. _____

LONGITUDE _____

GPS (X) _____ TRAVERSE (X) _____

BASED ON THE FOLLOWING CONTROL:

PLACE MONUMENT SYMBOL AT PROPER LOCATION ON ABOVE INDEX

CORNER MONUMENT

WITNESS MONUMENT

(a)

BEARINGS ARE BASED ON:

FIELD BOOK _____ PAGE # _____

SHEET 1 OF 2

SHOW A PLAN VIEW DRAWING DEPICTING THE CORNER MONUMENT AND SURROUNDING PHYSICAL FEATURES, INCLUDING THE EXCAVATION AREA AND DEPTH.

PLANNING & ZONING COMMITTEE ADOPTED THE ABOVE FORM ON 12/2/1982

CORNER CODE 2 23

PL632

(B) Describe any record evidence, monument evidence, occupational evidence, testimonial evidence or any other material evidence you considered, and whether the monument was found or placed.

1833 MULLETT

WEST ON SOUTH SIDE SECTION 36 VAR 7-00

2640 SET QUARTER SECTION POST WHITE OAK 10 N54E 20.46'; WHITE OAK 14 N15W 69.3;

4059 ENTER MARSH

5016 LEAVE MARSH

5280 SET POST CORNER SECTIONS 34 & 36 BLACK OAK 14 N9E 12.54'; WHITE OAK 8 N64 1/2W 67.98'. LAND EXCEPT MARSH ROLLING SECOND RATE THINLY TIMBERED WITH WHITE BLACK AND BUR OAK

1868 LOCKE PLYMOUTH REMONUMENTATION PG 8

WEST ON SOUTH BOUNDARY OF SEC 36. VAR 6-30

2645.45 INTERSECTED 1/4 LINE 22.44' SOUTH OF COR. FOUND EAST BT AND STUMPS OF WEST BT AND OLD STAKE. COR IN LINE WITH NORTH AND SOUTH FENCES AND 3 FT NORTH OF FENCE RUNNING EAST ON SOUTH SIDE OF HIGHWAY MONUMENT MARKED WITH FIGURES 36. VAR CORRECTED 6 CONTINUED WEST FROM 1/4 COR WITH VAR 5-10 (PLACED CUT L.S.)

5295.34 INTERSECTED WEST BOUNDARY 5.28' NORTH OF COR. FOUND BT IN SEC 35 AND WHERE BT IN 36 WAS DUG OUT. {SW COR SEC 36}

5218.12 INTERSECTED WEST BOUNDARY OF SEC 1 TOWN 1N FOUND BT IN SEC 2 AND OLD STAKE. COR FOR SEC 36 IN CENTER OF N AND S HIGHWAY AND ON SOUTH LINE OF E AND W HIGHWAY VAR CORRECTED 5-17 {NW COR SEC 1) AUG 19, 1868

1871 COLLINS REMONUMENTATION PG 147

EAST ON NORTH LINE SEC 1 ON OFFSET

12.54' NORTH VARIATION 5-15

2584.56 OFFSET 33' SOUTH AND CONTINUED EAST WITH VARIATION 6

5216.64 INTERSECT RANGE LINE 19.8' SOUTH OF CORNER

WEST CORRECTED BACK VARIATION 5-17

2608.32 SET 1/4 36.3' EAST OF PLYMOUTH 1/4 CORNER (PLACED CUT L.S.)

CONTINUED WEST VARIATION 5-17

5216.64 SECTION CORNER OCT 18 1871

1961 BATTERMAN VOL 4 PG 63 STATES NOTHING ABOUT CORNER CALLS FOR IT EASTERLY 36.3 OF THE S 1/4 COR SEC 36. AT THE S 1/4 COR SEC 36 FD CUT STONE MON. & NOTE THAT @ S 1/4 COR SEC 36 C. SHIMEALL FD CUT LIMESTONE BROKEN OFF. RESET 1" PIPE AT S 1/4 COR. SKETCH SHOWS THE S 1/4 COR. IS NEAR THE FENCE LINE INT. & IS SE OF CURVE IN RD & S 1/4 COR. IS IN FARM ENTRANCE.

FOUND CUT LIMESTONE @ N1/4 COR SEC 1. AT S 1/4 COR SEC 36 PLYMOUTH TWP DUG 1.5 WIDE, 2.5' LONG, & 1.5' DEEP HOLE & FOUND NOTHING. DIGGERS HOTLINE LOCATED A N/S UNDERGROUND ELECTRIC CABLE IN CLOSE VICINITY TO CORNER. CUT LIMESTONE WAS PROBABLY DESTROYED. PLACE ALUM. MON. WITH CARSONITE ON WEST SIDE AT RECORD DISTANCE FROM N 1/4 COR SEC 1 NEWARK TWP AND ON LINE WITH THE N 1/4 COR SEC 1 AND THE NW COR SEC 1.

C) Was the corner restored through acceptance of (1) an obliterated evidence location, or, (2) a found perpetuated location?

ACCEPTED OBLITERATED EVIDENCE LOCATION.

I, Donald Barnes, hereby certify that the corner location as identified by the corner code index was determined by me under my direction and control and that this U.S. Public Land Survey Monument Record is correct and complete to the best of my knowledge and belief.

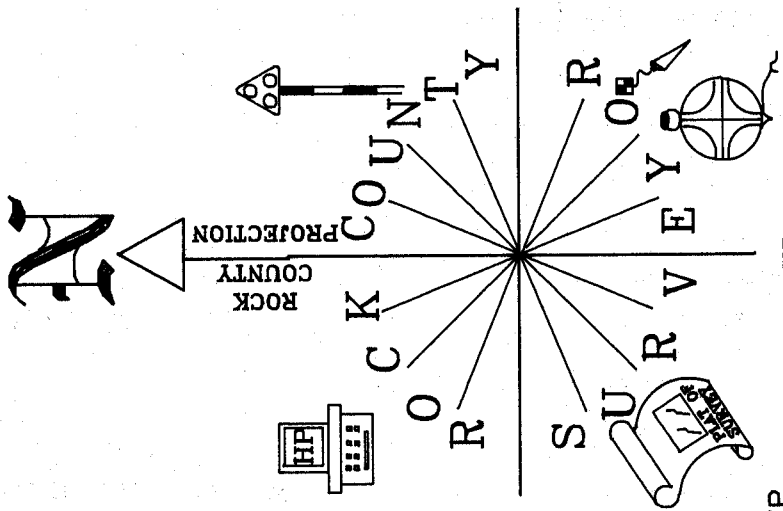
seal

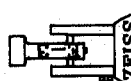
Number of included sheets 1

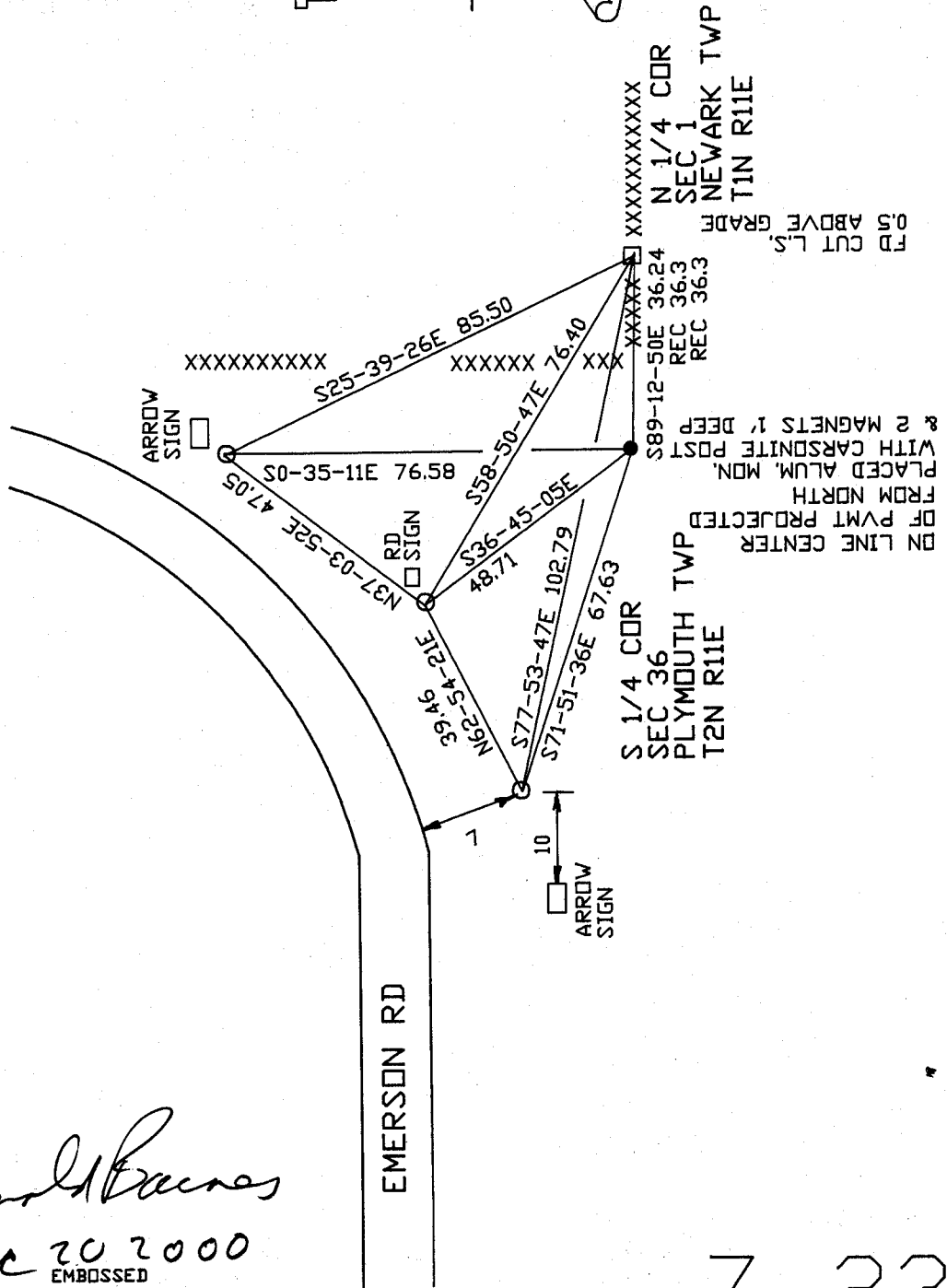
emboss
Donald Barnes

Dec 20 2000

CORNER CODE Z-23



 ZEISS
 OBSERVATION SHEET #340
 O 3/4X24 REROD/PLASTIC CAP



Donald Krues
 Dec 20 2000
 EMBOSSED SEAL