

# U.S. PUBLIC LAND SURVEY MONUMENT RECORD

For Public Land Survey Corners In:

WI ADMINISTRATIVE CODE A-E 7.08 REQUIREMENT

T. 2N. R. //E.

CORNER CODE INDEX

1	2	3	4	5	6	7	8	9	10	11	12	13	14	15	16	17	18	19	20	21	22	23	24	25	
A																									A
B																									B
C																									C
D																									D
E																									E
F																									F
G																									G
H																									H
I																									I
J																									J
K																									K
L																									L
M																									M
N																									N
O																									O
P																									P
Q																									Q
R																									R
S																									S
T																									T
U																									U
V																									V
W																									W
X																									X
Y																									Y
Z																									Z

PLYMOUTH TWP  
ROCK COUNTY WI

IF AVAILABLE  
ROCK COUNTY COORDINATES PREFERRED

North \_\_\_\_\_ Elev. \_\_\_\_\_

East \_\_\_\_\_

Hor. Datum \_\_\_\_\_ Vert. Datum \_\_\_\_\_

LATITUDE \_\_\_\_\_ ELLIPS. HT. \_\_\_\_\_

LONGITUDE \_\_\_\_\_

GPS (X) \_\_\_\_\_ TRAVERSE (X) \_\_\_\_\_

BASED ON THE FOLLOWING CONTROL:  
\_\_\_\_\_

1 2 3 4 5 6 7 8 9 10 11 12 13 14 15 16 17 18 19 20 21 22 23 24 25  
PLACE MONUMENT SYMBOL  AT PROPER  
LOCATION ON ABOVE INDEX

CORNER MONUMENT

WITNESS MONUMENT

(a)

BEARINGS ARE BASED ON: \_\_\_\_\_

FIELD BOOK \_\_\_\_\_ PAGE # \_\_\_\_\_

SHEET 1 OF 3

SHOW A PLAN VIEW DRAWING DEPICTING THE CORNER MONUMENT AND SURROUNDING PHYSICAL FEATURES, INCLUDING THE EXCAVATION AREA AND DEPTH.

PLANNING & ZONING COMMITTEE ADOPTED THE ABOVE FORM ON 12/2/1982

CORNER CODE J-23

PL552

(B) Describe any record evidence, monument evidence, occupational evidence, testimonial evidence or any other material evidence you considered, and whether the monument was found or placed.

- 1833 HARRISON EAST ON RANDOM BET SECS 12 & 13  
1716 LEFT TIMBER & ENTER MARSH  
2640 TEMPY QR P  
5307.72 INT. E. BDY 22.44' N OF P LAND LEVEL 2<sup>ND</sup> RATE  
FOR WEST 1/2 MILE WITH RED & BURR & BLK O LAST  
1/2 LEVEL & WET 3<sup>RD</sup> RATE MARSH  
WEST COR. WEST  
2653.86 QUARTER SEC COR. {BURR O 14 NB6W 891'  
BURR O 14} MARKED  
5307.72 SEC COR.
- 1864 LOCKE VOL 1 PG 218 & MAP#4342 FD BTB. SET LARGE HH  
L.S. ON E. WHITE LARGE LIMY SANDSTONE S & W IN MOUND.  
PIT 4' EAST. 2709.96 TO SW COR SEC 12, 2602.38 TO SE  
COR SEC 12, VAR 8-00 2651.88 TO CENTER SEC 12, & VAR 5-  
25 2651.88 FROM CENTER SEC 12 TO N 1/4 COR SEC 12.  
CENTER SET BY EQUAL DISTANCE METHOD.
- 1868 LOCKE PG 30 EAST BETWEEN SECS 12 & 13 VAR 5-12  
2716.56 INTERSECTED 1/4 LINE AT COR. FOUND BT & COR  
AS SET BY SELF. (SEE CO. SURVEYORS RECORD  
SEC 12) COR IN LINE OF FENCE RUNNING E & A  
LITTLE WEST OF FENCE RUNNING N  
CONTINUED EAST FROM 1/4 COR WITH VAR 5-35  
5328.84 INTERSECTED EAST BOUNDARY AT COR.  
(REMONUMENTATION PLACED CUT LIMESTONES)
- 1870 RUGER VOL 2 PG 33 STONE MON SET BY LOCKE VAR 6-10  
ON N/S CENTER LINE SEC 13
- 1876 RUGER VOL 2 PG 205 STONE MON. VAR 3-55 2720.52 TO  
SW COR SEC 12, VAR 4-10 2608.32 TO SE COR SEC 12, VAR  
5-27 2651.22 TO CENTER SEC 12, & VAR 5-27 5296.83 TO N  
1/4 COR SEC 12. IN MAKING THE SURVEY I TESTED THE  
STONE MON.'S ESTABLISHED BY LOCKE & FOUND THEM  
CORRECT.
- 1966 BATTERMAN VOL 4 PG 295 FD CUT LIMESTONE TILTED.  
STRAIGHTENED. SURROUNDED WITH HH SET YELLOW POST  
SW OF STONE. 2660.36 TO CENTER OF SEC 12 (FD RUGERS  
STONE)
- 1972 LEE VOL 4 PG 587 FD CUT STONE. 2715.85 TO SW COR SEC  
12, 2611.60 TO SE COR SEC 12, ANGLE 88-34-44 @ S 1/4  
COR SEC 12 FROM SW TO CENTER SEC 12, ANGLE 91-25-16  
@ S 1/4 COR SEC 12 FROM CENTER SEC 12 TO SE COR SEC  
12, ANGLE 91-10-02 @ CENTER SEC 12 FROM S 1/4 COR SEC  
12 TO W 1/4 COR SEC 12, ANGLE 88-38-39 @ CENTER SEC 12  
FROM E 1/4 COR SEC 12 TO S 1/4 COR SEC 12, & ANGLE 180-  
00-00 @ S 1/4 COR SEC 12 FROM SE TO SW CORNERS SEC 12.
- 1980 BARNES VOL 6 PG 29 FROM DATA IN VOL 4 PG 587.  
S89-56-25E 2613.47 TO SE COR SEC 12 & NO-56-17W  
2660.49 TO CENTER SEC 12.
- 1982 LEUNMBERGER MAP#04308 USED COR TO SUBDIVIDE SEC  
12.
- 1982 BARNES VOL 6 PG 282 RECORD COORDINATES: S 1/4 COR  
SEC 12 N/S 235,521.26; E/W 2,231,443.85 & CENTER SEC  
12 N/S 238,181.39; E/W 2,231,400.29
- 1988 BARNES VOL 6 PG 379 BEARINGS & DISTANCES COMPUTED  
FROM REC. STATE PLANE COORDINATES. NO-56-17W  
2660.49 TO CENTER SEC 12 & ANGLE @ CENTER SEC 12  
FROM S 1/4 COR SEC 12 TO W 1/4 COR SEC 12 91-10-01 (LEE  
91-10-02).

SHEET 1 OF 3

J-23

Donald Barnes

11-18-2002

PL552

FD 1 1/2" PIPE 3' DEEP. PLACED 3 MAGNETS ON TOP OF PIPE & 1 MAGNET 15' ABOVE PIPE. LAND OWNER STATED HE REMOVED THE FENCE LINE & THE STONE, BUT HE PLACED A PIPE IN THE HOLE CREATED BY THE STONE.

C) Was the corner restored through acceptance of (1) an obliterated evidence location, or, (2) a found perpetuated location?

DISTANCES AND ANGLES ARE IN HARMONY WITH LEE'S RECORD MEASUREMENTS TO THE WEST & NORTH. ACCEPTED FOUND MONUMENT. ALSO IN HARMONY WITH WP&L COORDINATES.

D) Describe any material discrepancy between the location of the corner as restored or reestablished and the location of that corner as previously restored or reestablished by distance and direction. Show the discrepancy on the plan view drawing under (a), above. Show the distances between the corner as previously restored or reestablished and (1) the corner as restored or reestablished, and (2) to at least 4 of the witness monuments shown on the drawing in (a), above.

(E) Was the corner reestablished through lost corner proportionate methods? If so, show the method, including the directions and distances to other public land survey corners used as evidence or used for proportioning the corner location.

I, Donald Barnes, hereby certify that the corner location as identified by the corner code index was determined by me under my direction and control and that this U.S. Public Land Survey Monument Record is correct and complete to the best of my knowledge and belief.

*Donald Barnes*  
5531

11-18-2002

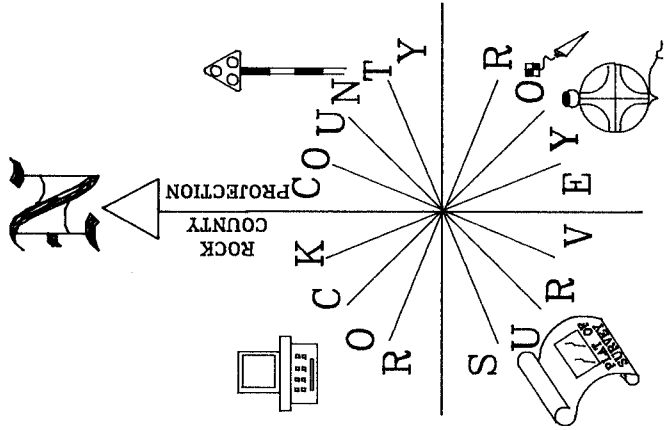
Emboss

SHEET 2 OF 3

CORNER CODE

**J-23**

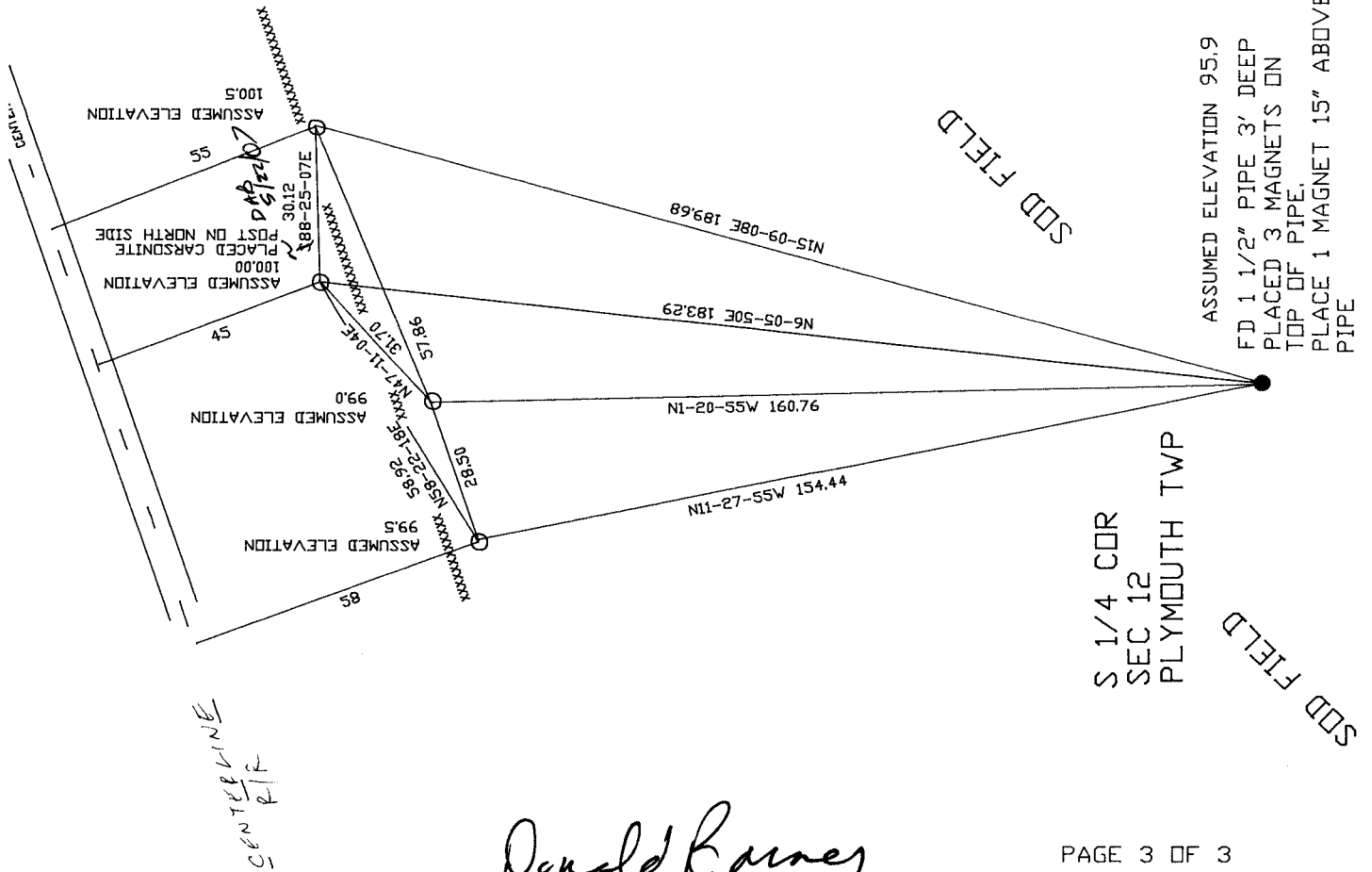
A.E. 7.08 REQUIREMENT



NOT TO SCALE

OBSERVATION SHEETS #552  
& 338

○ 3/4x24" REERD



Donald Barnes

EMBOSSED SEAL

11-18-02

J-23