

U.S. PUBLIC LAND SURVEY MONUMENT RECORD

For Public Land Survey Corners in:

WI ADMINISTRATIVE CODE A-E 7.08 REQUIREMENT

T. 3 N., R. 10 E

CORNER CODE INDEX

A	1	2	3	4	5	6	7	8	9	10	11	12	13	14	15	16	17	18	19	20	21	22	23	24	25
B																									
C	6																								
D																									
E																									
F	1																								
G																									
H																									
J																									
K	18																								
L																									
M																									
N																									
O																									
P	19																								
Q																									
R																									
S																									
T	30																								
U																									
V																									
W																									
X	31																								
Y																									
Z																									

MAGNOLIA TWP
ROCK COUNTY WI

IF AVAILABLE
ROCK COUNTY COORDINATES PREFERRED

North _____ Elev. _____

East _____

Hor. Datum _____ Vert. Datum _____

LATITUDE _____ ELLIPS. HT. _____

LONGITUDE _____

GPS (X) _____ TRAVERSE (X) _____

BASED ON THE FOLLOWING CONTROL:

PLACE MONUMENT SYMBOL AT PROPER LOCATION ON ABOVE INDEX

CORNER MONUMENT

WITNESS MONUMENT

(a)

BEARINGS ARE BASED ON:

FIELD BOOK A PAGE # 54-71

SHEET 1 OF 2

SHOW A PLAN VIEW DRAWING DEPICTING THE CORNER MONUMENT AND SURROUNDING PHYSICAL FEATURES, INCLUDING THE EXCAVATION AREA AND DEPTH.

PLANNING & ZONING COMMITTEE ADOPTED THE ABOVE FORM ON 12/2/1982

CORNER CODE P13

MA577

(B) Describe any record evidence, monument evidence, occupational evidence, testimonial evidence or any other material evidence you considered, and whether the monument was found or placed.

- 1833 HARRISON (NOV 4) NORTH BETWEEN SECS. 21 & 22
 - 557.04 WHITE OAK 10 IN DIAM
 - 2010.36 WHITE OAK 18 IN DIAM
 - 2640 QUARTER SEC. COR.
BEARINGS (WHITE OAK 24 N53E 84 & WHITE OAK 20 N40W 134)
MARKED (WHITE OAK 24 & WHITE OAK 20)
 - 4117.08 BURR OAK 18 IN DIAM
 - 5280 COR. TO SECS 15,16,21,22. -SET BTS.
- 1847 TOWN ROAD RECORDS BOOK #1 PG 3 " " " " THAT A HIGHWAY BE LAID OUT IN SAID TOWN OF THE WIDTH OF FOUR RODS AND SAID COMMISSIONERS HAVE CAUSED A SURVEY THERE OF TO BE MADE AS FOLLOWS; THE CENTER LINE OF THE SAID HIGHWAY IS TO COMMENCE AT THE CORNERS OF SECTIONS 33 & 34 UPON THE SOUTH LINE OF T3N R10E AND RUN THENCE NORTH UPON THE SECTION LINE BETWEEN SECTIONS 33,34,-27,28-21,22-15 AND 16 288 CHAINS AND 91 LINKS (19,068.06') TO THE CENTER OF MADISON AND БЕЛОIT ROAD SAID CORNER AND DISTANCE ARE THE CENTER OF THE ROAD. " " " " " "
- 1869 LEE VOL 1 PG 356 FOUND STUMPS OF LPS SET BR OAK STAKE IN ROAD. USED TO SUBDIVIDE SEC 22. 1329.57' (VER 7-15) FROM CENTER OF SEC 22 TO S 1/16TH COR OF SW 1/4 OF SEC 22. DISTANCES ALONG U/S CENTER LINE OF SECTION 22.
- 1964 BATTERMAN JR. VOL 4 PG 188 DUG LARGE HOLE FOUND NOTHING

C) Was the corner restored through acceptance of (1) an obliterated evidence location, or, (2) a found perpetuated location?
 ACCEPTED OBLITERATED EVIDENCE LOCATION. CORNER ESTABLISHED AT CENTER OF PAVEMENT ON LINE WITH E/W FENCE. THIS IS IN HARMONY WITH E/W FENCE AT W 1/16 OF SW 1/4 OF SEC 22, FENCE AT S 1/16TH OF NW 1/4 OF SEC 22, DISTANCE TO THE CENTER OF SECTION 22, LEE'S 1869 DISTANCE FROM THE N 1/16TH CORNER OF THE NW 1/4 TO THE S 1/16TH CORNER OF THE NW 1/4 OF SEC 22, AND THE TOWN ROAD RECORDS.

D) Describe any material discrepancy between the location of the corner as restored or reestablished and the location of that corner as previously restored or reestablished by distance and direction. Show the discrepancy on the plan view drawing under (a), above. Show the distances between the corner as previously restored or reestablished and (1) the corner as restored or reestablished, and (2) to at least 4 of the witness monuments shown on the drawing in (a), above.

(E) Was the corner reestablished through lost corner proportionate methods? If so, show the method, including the directions and distances to other public land survey corners used as evidence or used for proportioning the corner location.

I, Donald Barnes, hereby certify that the corner location as identified by the corner code index was determined by me under by direction and control and that this U.S. Public Land Survey Monument Record is correct and complete to the best of my knowledge and belief.

Donald Barnes
 August 16, 1996
 emboss

Number of included sheets _____

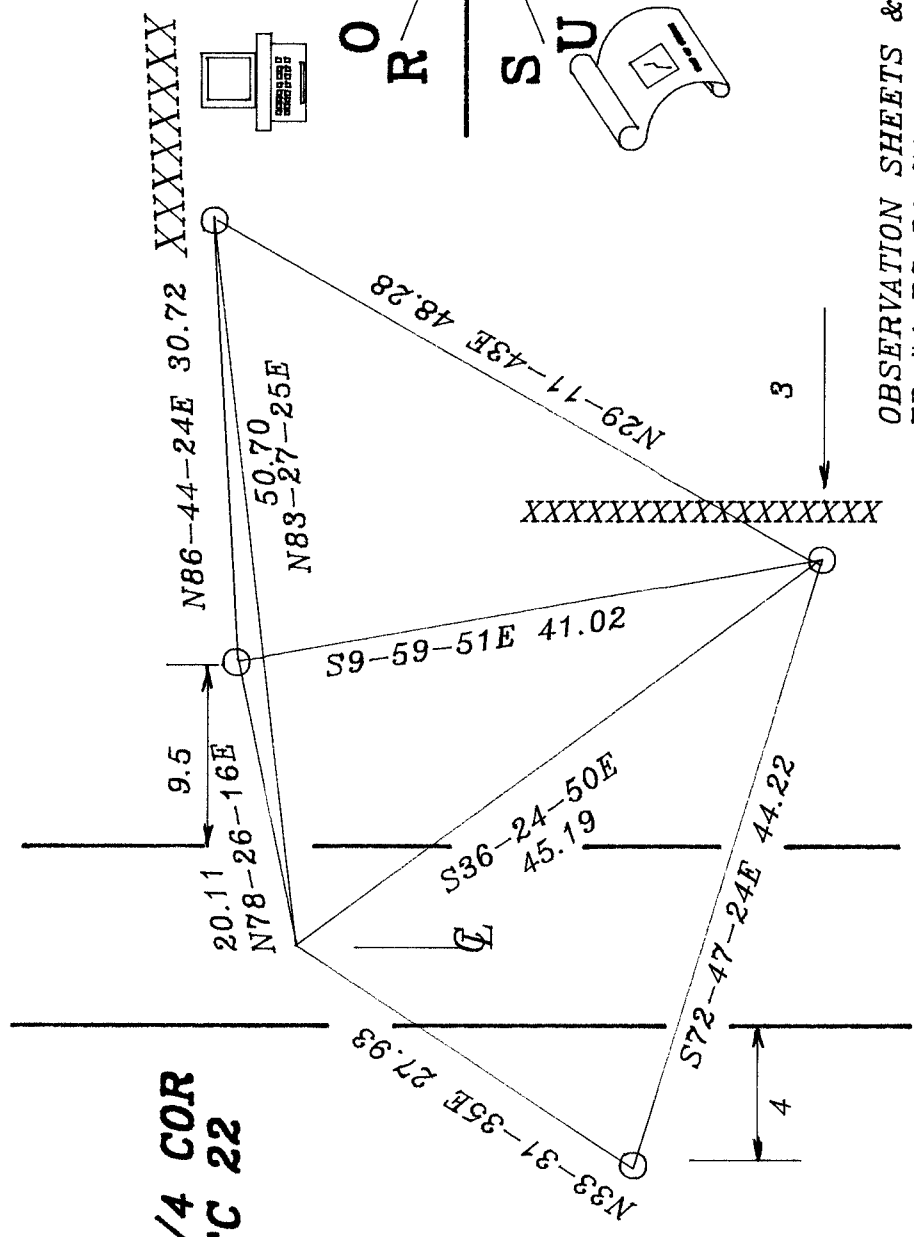
CORNER CODE

A-E 7.08 REQUIREMENT

Donald Barnes
 AUGUST 16, 1996

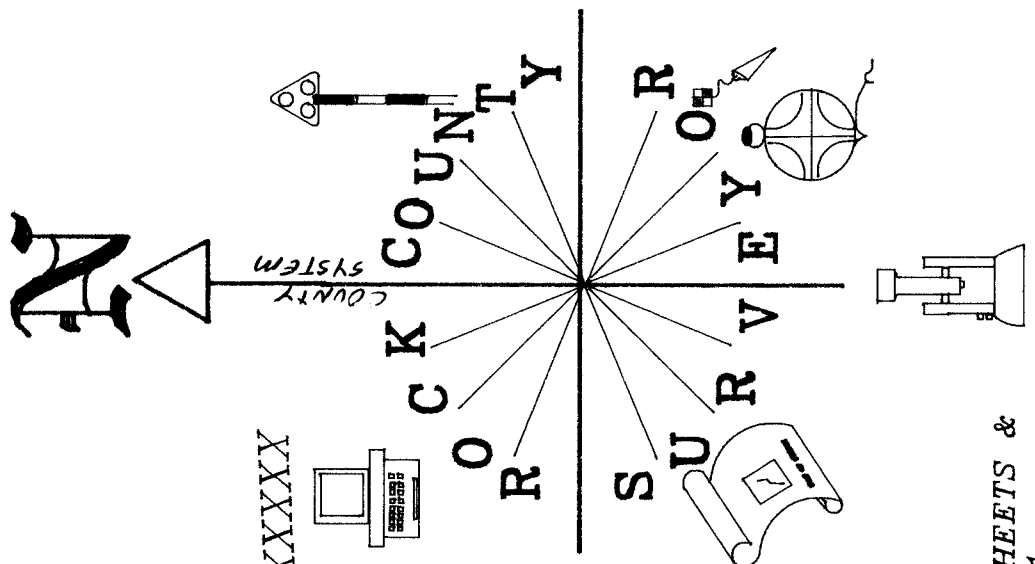
KNUTSON RD

**W 1/4 COR
 SEC 22**



OBSERVATION SHEETS &
 FB #4 PC 54-71

○ 3/4X24 REROD



NW COR
 SEC 22

NO-18-01W 2656.80

W 1/4 COR
 SEC 22

NO-12-06E 2634.81

S89-54-35E 2652.74
 CENTER
 SEC 22

SW COR
 SEC 22