

**U.S. PUBLIC LAND SURVEY MONUMENT RECORD**

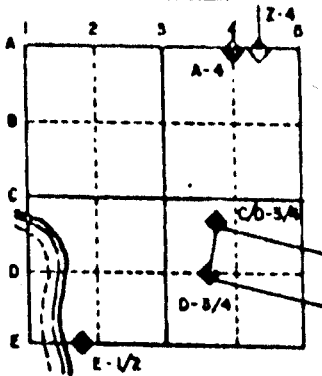
For Public Land Survey Corners in the  
T. \_\_\_ N., R. \_\_\_ E.

**CORNER CODE INDEX**

	1	2	3	4	5	6	7	8	9	10	11	12	13	14	15	16	17	18	19	20	21	22	23	24	25
A																									
B																									
C	6																								
D																									
E																									
F																									
G	7	8	9	10	11	12																			
H																									
I																									
J																									
K	16	17	18	15	14	13																			
L																									
M																									
N																									
O																									
P	19	20	21	22	23	24																			
Q																									
R																									
S																									
T	30	29	28	27	26	25																			
U																									
V																									
W																									
X																									
Y	31	32	33	34	35	36																			
Z																									

PLACE MONUMENT SYMBOL (◆) AT PROPER LOCATION ON ABOVE INDEX

**EXAMPLE**



CLINTON TWP  
ROCK COUNTY WI

IF AVAILABLE  
STATE PLANE COORDINATES

North (Y) \_\_\_\_\_ Eleve. (Z) \_\_\_\_\_  
 East (X) \_\_\_\_\_ Zone \_\_\_\_\_  
 Hor. Datum \_\_\_\_\_ Vert. Datum \_\_\_\_\_

◆ CORNER MONUMENT

○ WITNESS MONUMENT

BEARINGS ARE BASED ON:

**RECORD OF U. S. PUBLIC LAND SURVEY CONTROL STATION**

U. S. PUBLIC LAND SURVEY CORNER 116/127 T 1 N, R 15 E, WALWORTH COUNTY, WIS.

GEODETTIC SURVEY BY: AYRES ASSOCIATES YEAR: 1992

STATE PLANE COORDINATES OF: SECTION CORNER  
 NORTH 208,151.37

EAST 2,329,657.77

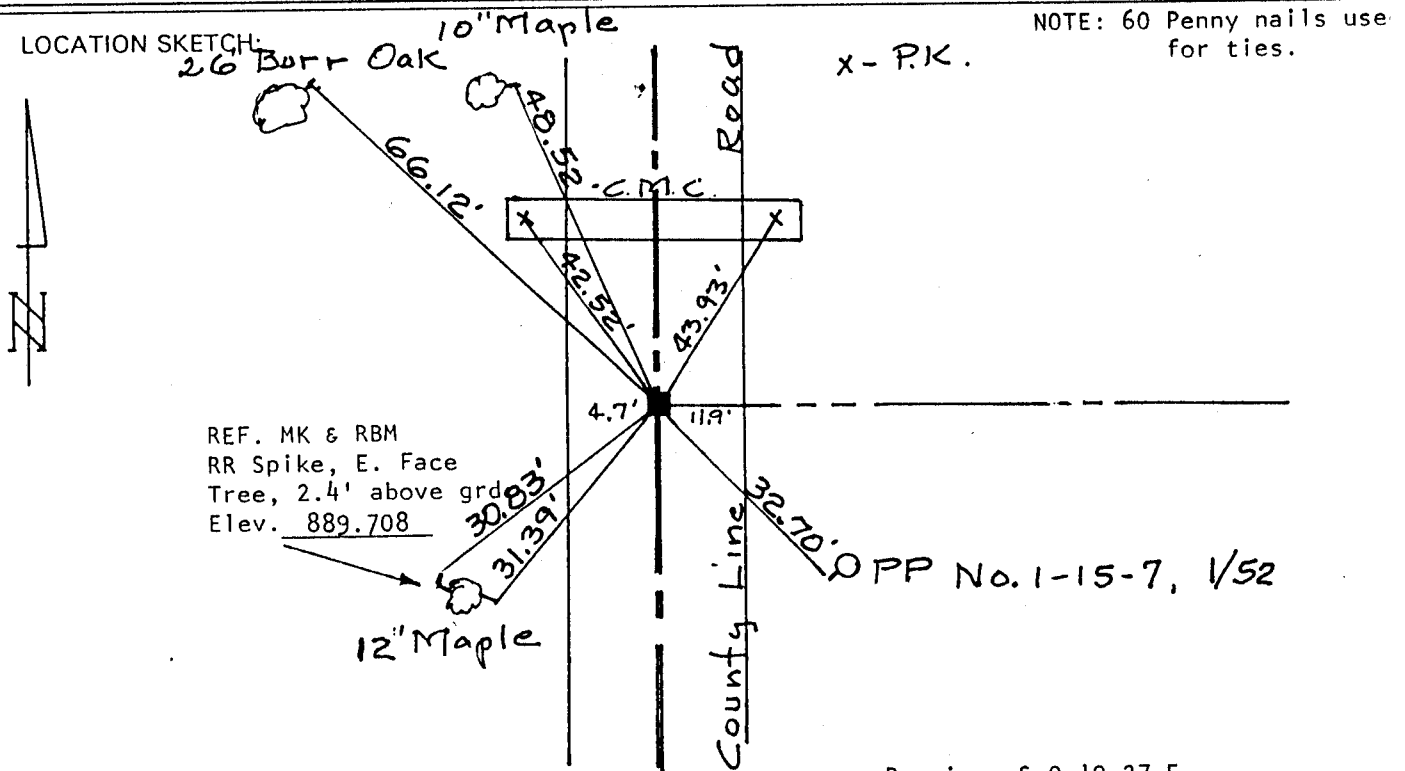
ELEVATION OF STATION: 888.531

HORIZONTAL DATUM: WISCONSIN STATE PLANE COORDINATE SYSTEM, SOUTH ZONE

VERTICAL DATUM: NATIONAL GEODETTIC VERTICAL DATUM OF 1929

CONTROL ACCURACY: THETA ANGLE: + 0-50-26  
 HORIZONTAL: THIRD ORDER, CLASS I VERTICAL: SECOND ORDER, CLASS II

LOCATION SKETCH:



NOTE: 60 Penny nails use for ties.

x - P.K.

■ - Concrete County Monument

Bearing: S 0-19-27 E  
 To W 1/4 Cor. Sec. 7-1-15

SURVEYOR'S AFFIDAVIT:

STATE OF WISCONSIN) SS  
WALWORTH COUNTY)

I hereby certify that I found an old concrete monument at the corner location. Set a 6" X 9" X 36" Concrete County Monument at the corner, with a Walworth County brass cap.

DATE OF SURVEY: 4-13-92 Lloyd L. Jensen S. 211  
 REGISTERED LAND SURVEYOR

4-1

FORM PREPARED BY SOUTHEASTERN WISCONSIN REGIONAL PLANNING COMMISSION